

Internal assemblies (3 of 6)

Figure 4-6 Internal assemblies (3 of 6)

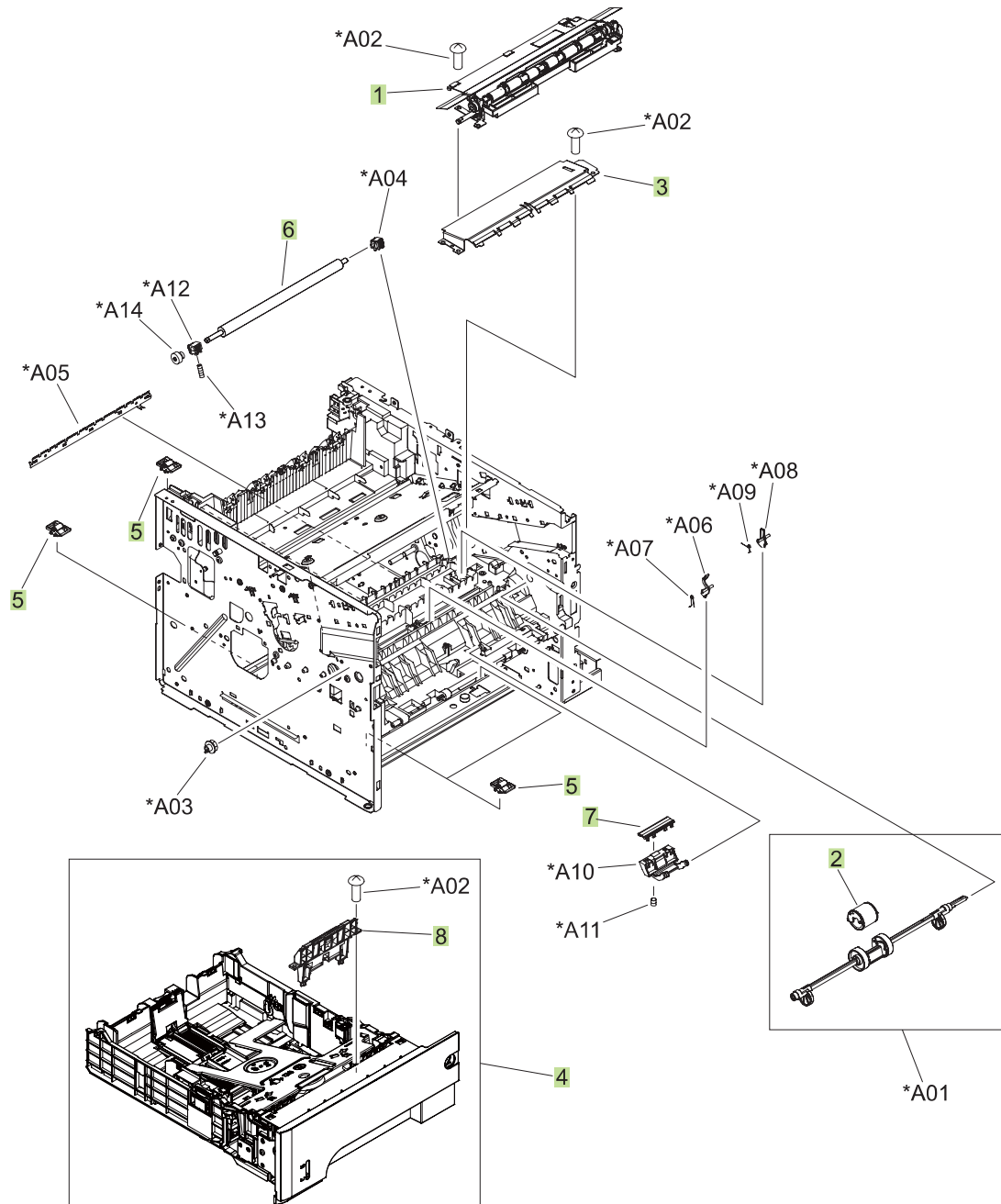


Table 4-11 Internal assemblies (3 of 6)

Ref	Description	Part number	Qty
1	Registration roller assembly	RM1-6272-000CN	1
2	Roller, multipurpose	RL1-2412-000CN	1
3	Transfer lower guide assembly	RM1-6315-000CN	1
4	Cassette	RM1-6279-000CN	1
5	Base plate roller assembly	RM1-6306-000CN	4
6	Roller, transfer	RM1-6321-000CN	1
7	Pad, multipurpose separation	RC2-8575-000CN	1
8	Separation holder assembly	RM1-6303-000CN	1

Internal assemblies (4 of 6)

Figure 4-7 Internal assemblies (4 of 6)

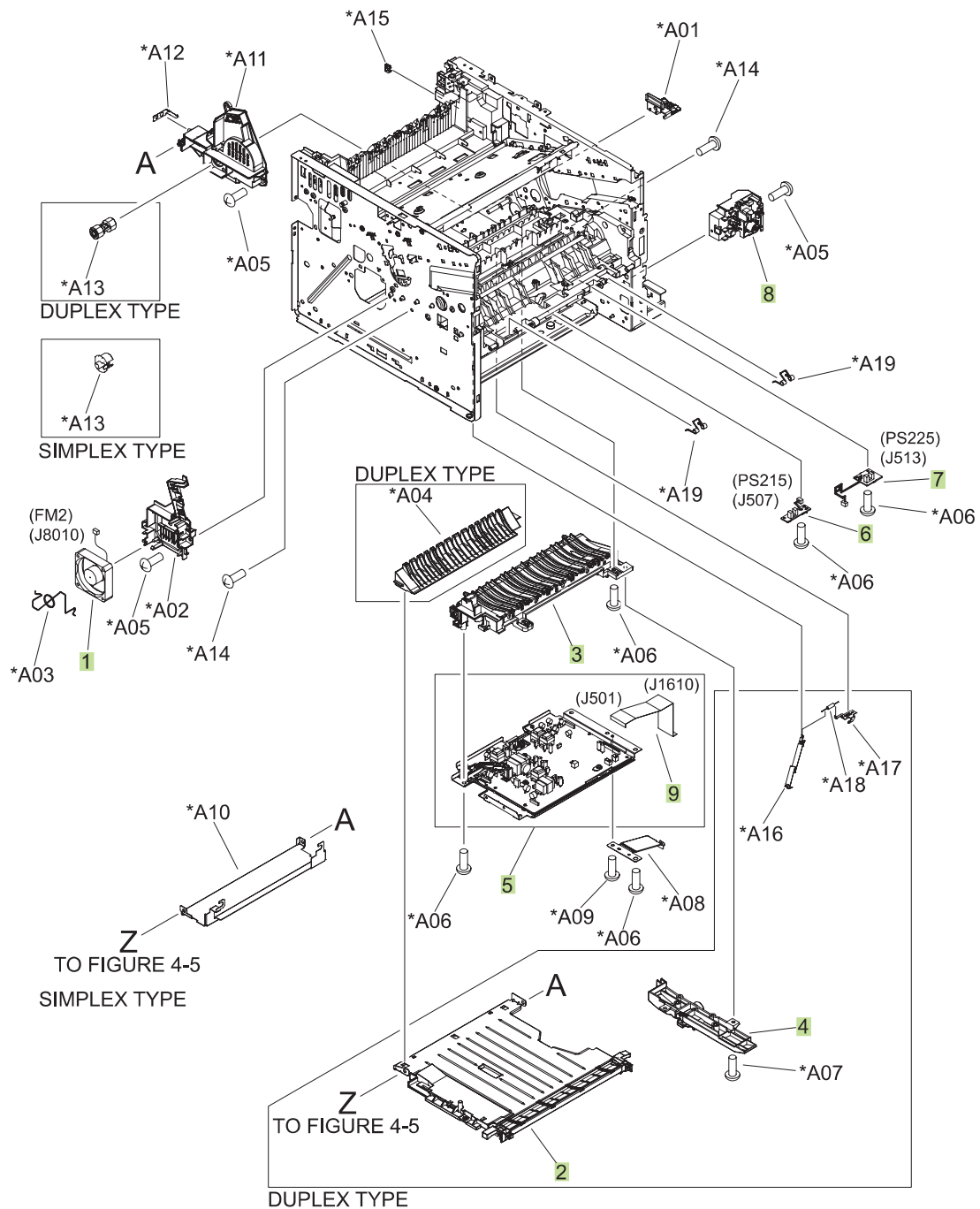


Table 4-12 Internal assemblies (4 of 6)

Ref	Description	Part number	Qty
1	Fan, sub	RK2-1499-000CN	1
2	Lower paper feed guide; duplex models	RM1-6263-000CN	1
3	Paper-feed guide assembly	RM1-6270-000CN	1
4	Position-guide assembly; duplex models	RM1-6273-000CN	1
5	High-voltage power supply; duplex models	RM1-6280-000CN	1
5	High-voltage power supply; simplex models	RM1-6300-000CN	1
6	TOP sensor PCA	RM1-6511-000CN	1
7	Paper width sensor PCA	RM1-6512-000CN	1
8	Switch assembly, power	RM1-6283-000CN	1
9	Cable, flat	RK2-3101-000CN	1

Internal assemblies (5 of 6)

Figure 4-8 Internal assemblies (5 of 6)

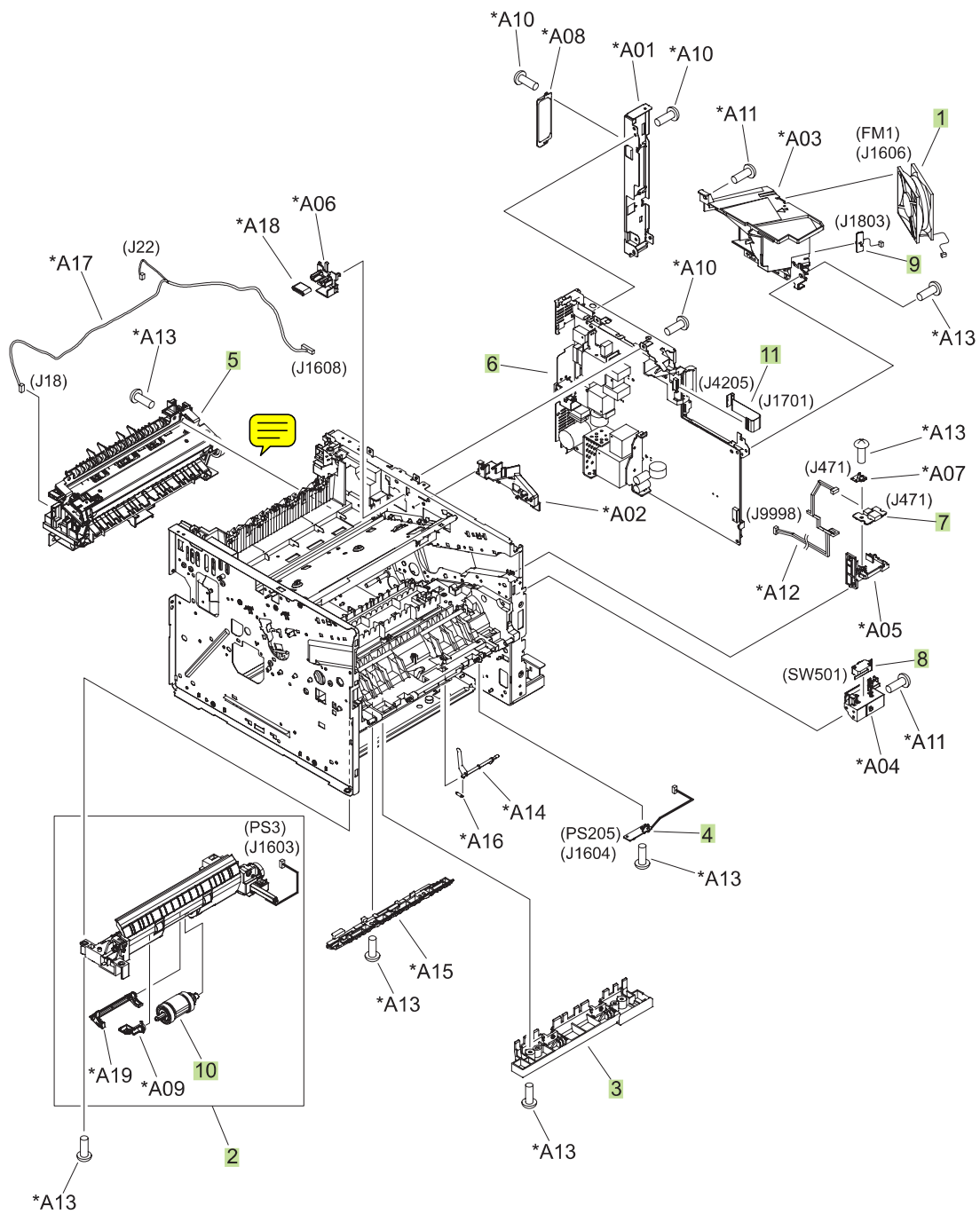


Table 4-13 Internal assemblies (5 of 6)

Ref	Description	Part number	Qty
1	Fan, main	RK2-1497-000CN	1
2	Cassette, paper pickup assembly; duplex models	RM1-6268-000CN	1
2	Cassette, paper pickup assembly; simplex models	RM1-6299-000CN	1
3	Idler roller assembly	RM1-6271-000CN	1
4	Multipurpose sensor PCA	RM1-6510-000CN	1
5	Fuser assembly 110V	RM1-6274-000CN	1
5	Fuser assembly 220V	RM1-6319-000CN	1
6	Engine controller PCA 110V	RM1-6281-000CN	1
6	Engine controller PCA 220V	RM1-6318-000CN	1
7	Front USB PCA	RM1-6514-000CN	1
8	Microswitch	WC4-5171-000CN	1
9	Environmental sensor assembly	RM1-6515-000CN	2
10	Cassette pickup roller	RM1-6313-000CN	1
11	Cable, flat	RK2-2788-000CN	1

Internal assemblies (6 of 6)

Figure 4-9 Internal assemblies (6 of 6)

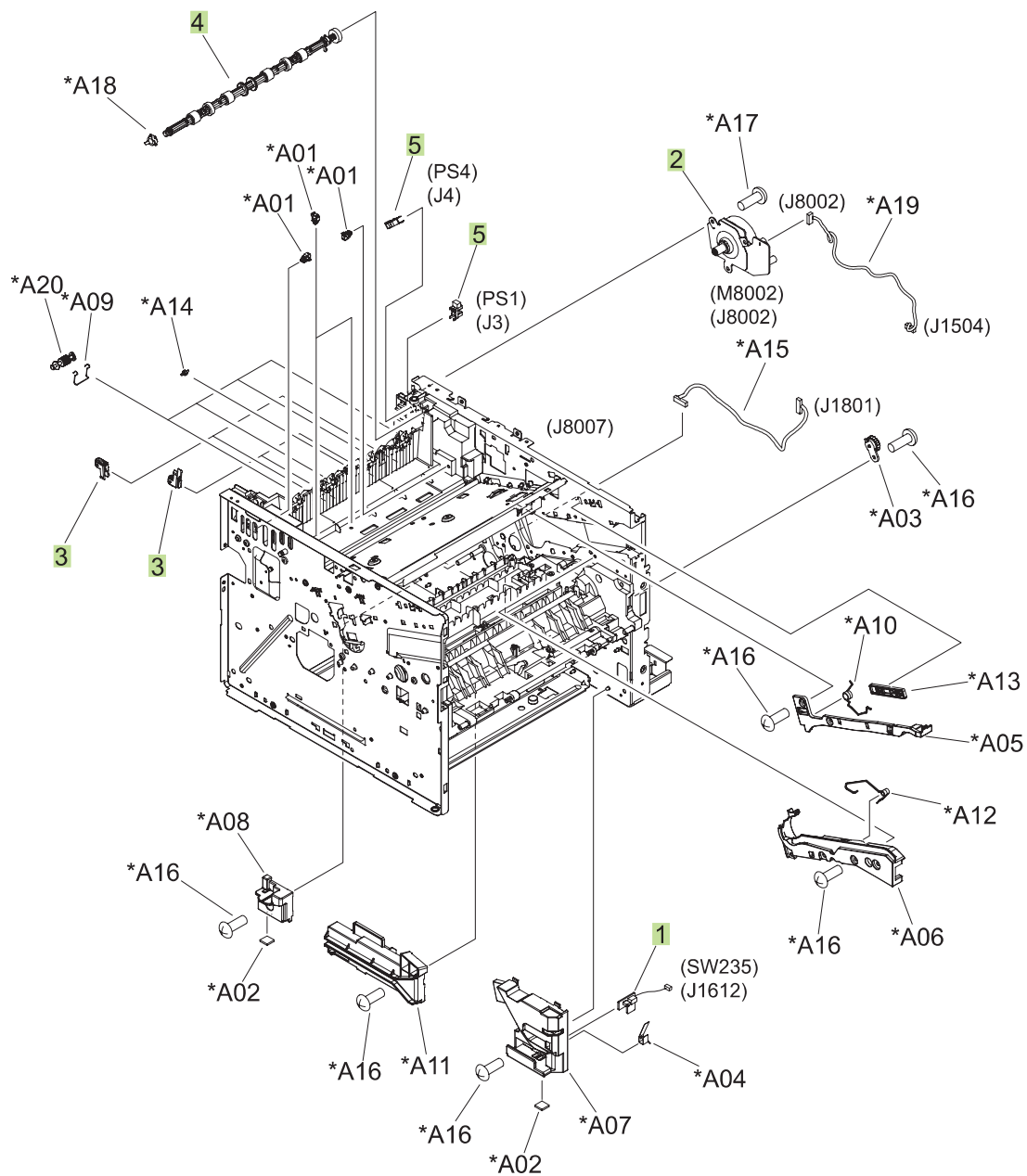


Table 4-14 Internal assemblies (6 of 6)

Ref	Description	Part number	Qty
1	Tray sensor PCA	RM1-6487-000CN	1
2	Fuser motor assembly	RM1-6296-000CN	1
3	Paper delivery roller assembly	RM1-6301-000CN	4
4	Face-down roller assembly	RM1-6311-000CN	1
5	Photo interrupter, TLP1243	WG8-5696-000CN	2

Input devices

500-sheet input tray (Tray 3 and Tray 4)

Figure 4-10 500-sheet input tray (Tray 3 and Tray 4)

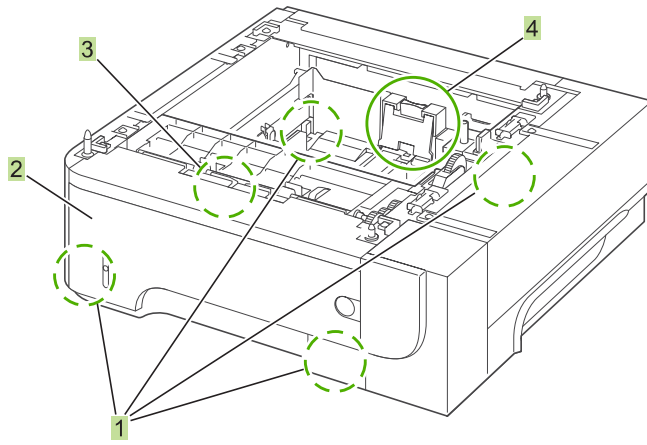


Table 4-15 500-sheet input tray (Tray 3 and Tray 4)

Ref	Description	Part number	Qty
	Optional 500-sheet tray and feeder unit	CE530-69001	1
1	Base plate roller assembly	RM1-6306-000CN	4
2	Cassette	RM1-6279-000CN	1
3	Pickup roller set, cassette	RM1-6313-000CN	1
4	Separation holder assembly	RM1-6303-000CN	1

Alphabetical parts list

Table 4-16 Alphabetical parts list

Description	Part number	Table and page
Base plate roller assembly	RM1-6306-000CN	Internal assemblies (3 of 6) on page 281
Base plate roller assembly	RM1-6306-000CN	500-sheet input tray (Tray 3 and Tray 4) on page 289
Cable, flat	RK2-3103-000CN	Internal assemblies (1 of 6) on page 277
Cable, flat	RK2-3101-000CN	Internal assemblies (4 of 6) on page 283
Cable, flat	RK2-2788-000CN	Internal assemblies (5 of 6) on page 285
Cartridge-door assembly	RM1-6264-000CN	Covers on page 275
Cassette	RM1-6279-000CN	Internal assemblies (3 of 6) on page 281
Cassette	RM1-6279-000CN	500-sheet input tray (Tray 3 and Tray 4) on page 289
Cassette pickup roller	RM1-6313-000CN	Internal assemblies (5 of 6) on page 285
Cassette, paper pickup assembly; duplex models	RM1-6268-000CN	Internal assemblies (5 of 6) on page 285
Cassette, paper pickup assembly; simplex models	RM1-6299-000CN	Internal assemblies (5 of 6) on page 285
Control panel; duplex models	RM1-6518-000CN	Covers on page 275
Control panel; duplex models	RM1-6519-000CN	Covers on page 275
Cover, DIMM	RC2-7674-000CN	Covers on page 275
Cover, formatter	RC2-7688-000CN	Covers on page 275
Cover, handle right	RC2-7675-000CN	Covers on page 275
Cover, left	RM1-6291-000CN	Covers on page 275
Cover, multipurpose assembly	RM1-6265-000CN	Covers on page 275
Cover, rear assembly	RM1-6292-000CN	Covers on page 275
Cover, right	RC2-7670-000CN	Covers on page 275
Cover, right-front	RC2-7672-000CN	Covers on page 275
Cover, right-rear	RC2-7673-000CN	Covers on page 275
Cover, top assembly	RM1-6289-000CN	Covers on page 275
Cover, upper-right (top-right) sub; duplex models	RC2-7677-000CN	Covers on page 275
Cover, upper-right (top-right); duplex models	RC2-7676-000CN	Covers on page 275
Cover, upper-right (top-right); simplex models	RC2-7707-000CN	Covers on page 275

Table 4-16 Alphabetical parts list (continued)

Description	Part number	Table and page
Engine controller PCA 110V	RM1-6281-000CN	Internal assemblies (5 of 6) on page 285
Engine controller PCA 220V	RM1-6318-000CN	Internal assemblies (5 of 6) on page 285
Environmental sensor assembly	RM1-6515-000CN	Internal assemblies (5 of 6) on page 285
Face-down roller assembly	RM1-6311-000CN	Internal assemblies (6 of 6) on page 287
Fan, main	RK2-1497-000CN	Internal assemblies (5 of 6) on page 285
Fan, sub	RK2-1499-000CN	Internal assemblies (4 of 6) on page 283
Front USB PCA	RM1-6514-000CN	Internal assemblies (5 of 6) on page 285
Fuser assembly 110V	RM1-6274-000CN	Internal assemblies (5 of 6) on page 285
Fuser assembly 220V	RM1-6319-000CN	Internal assemblies (5 of 6) on page 285
Fuser motor assembly	RM1-6296-000CN	Internal assemblies (6 of 6) on page 287
High-voltage power supply; duplex models	RM1-6280-000CN	Internal assemblies (4 of 6) on page 283
High-voltage power supply; simplex models	RM1-6300-000CN	Internal assemblies (4 of 6) on page 283
Idler roller assembly	RM1-6271-000CN	Internal assemblies (5 of 6) on page 285
Laser/scanner	RM1-6322-000CN	Internal assemblies (1 of 6) on page 277
Lower paper feed guide; duplex models	RM1-6263-000CN	Internal assemblies (4 of 6) on page 283
Microswitch	WC4-5171-000CN	Internal assemblies (5 of 6) on page 285
Multipurpose lifting plate assembly	RM1-6266-000CN	Covers on page 275
Multipurpose sensor PCA	RM1-6510-000CN	Internal assemblies (5 of 6) on page 285
Optional 500-sheet tray and feeder unit	CE530-69001	500-sheet input tray (Tray 3 and Tray 4) on page 289
Pad, multipurpose separation	RC2-8575-000CN	Internal assemblies (3 of 6) on page 281
Paper delivery roller assembly	RM1-6301-000CN	Internal assemblies (6 of 6) on page 287
Paper width sensor PCA	RM1-6512-000CN	Internal assemblies (4 of 6) on page 283

Table 4-16 Alphabetical parts list (continued)

Description	Part number	Table and page
Paper-feed guide assembly	RM1-6270-000CN	Internal assemblies (4 of 6) on page 283
Photo interrupter, TLP1243	WG8-5696-000CN	Internal assemblies (1 of 6) on page 277
Photo interrupter, TLP1243	WG8-5696-000CN	Internal assemblies (6 of 6) on page 287
Pickup roller set, cassette	RM1-6313-000CN	500-sheet input tray (Tray 3 and Tray 4) on page 289
Position-guide assembly; duplex models	RM1-6273-000CN	Internal assemblies (4 of 6) on page 283
Registration roller assembly	RM1-6272-000CN	Internal assemblies (3 of 6) on page 281
Roller, multipurpose	RL1-2412-000CN	Internal assemblies (3 of 6) on page 281
Roller, transfer	RM1-6321-000CN	Internal assemblies (3 of 6) on page 281
Separation holder assembly	RM1-6303-000CN	Internal assemblies (3 of 6) on page 281
Separation holder assembly	RM1-6303-000CN	500-sheet input tray (Tray 3 and Tray 4) on page 289
Stopper, bushing arm	RC2-7933-000CN	Internal assemblies (1 of 6) on page 277
Switch assembly, power	RM1-6283-000CN	Internal assemblies (4 of 6) on page 283
Tag holder assembly	RM1-6284-000CN	Internal assemblies (1 of 6) on page 277
TOP sensor PCA	RM1-6511-000CN	Internal assemblies (4 of 6) on page 283
Transfer lower guide assembly	RM1-6315-000CN	Internal assemblies (3 of 6) on page 281
Tray sensor PCA	RM1-6487-000CN	Internal assemblies (6 of 6) on page 287
Tray 1 solenoid	RK2-1490-000CN	Internal assemblies (2 of 6) on page 279
Tray 2 solenoid	RK2-1492-000CN	Internal assemblies (2 of 6) on page 279

Numerical parts list

Table 4-17 Numerical parts list

Part number	Description	Table and page
CE530-69001	Optional 500-sheet tray and feeder unit	500-sheet input tray (Tray 3 and Tray 4) on page 289
RC2-7670-000CN	Cover, right	Covers on page 275
RC2-7672-000CN	Cover, right-front	Covers on page 275
RC2-7673-000CN	Cover, right-rear	Covers on page 275
RC2-7674-000CN	Cover, DIMM	Covers on page 275
RC2-7675-000CN	Cover, handle right	Covers on page 275
RC2-7676-000CN	Cover, upper-right (top-right); duplex models	Covers on page 275
RC2-7677-000CN	Cover, upper-right (top-right) sub; duplex models	Covers on page 275
RC2-7688-000CN	Cover, formatter	Covers on page 275
RC2-7707-000CN	Cover, upper-right (top-right); simplex models	Covers on page 275
RC2-7933-000CN	Stopper, bushing arm	Internal assemblies (1 of 6) on page 277
RC2-8575-000CN	Pad, multipurpose separation	Internal assemblies (3 of 6) on page 281
RK2-1490-000CN	Tray 1 solenoid	Internal assemblies (2 of 6) on page 279
RK2-1492-000CN	Tray 2 solenoid	Internal assemblies (2 of 6) on page 279
RK2-1497-000CN	Fan, main	Internal assemblies (5 of 6) on page 285
RK2-1499-000CN	Fan, sub	Internal assemblies (4 of 6) on page 283
RK2-2788-000CN	Cable, flat	Internal assemblies (5 of 6) on page 285
RK2-3101-000CN	Cable, flat	Internal assemblies (4 of 6) on page 283
RK2-3103-000CN	Cable, flat	Internal assemblies (1 of 6) on page 277
RL1-2412-000CN	Roller, multipurpose	Internal assemblies (3 of 6) on page 281
RM1-6263-000CN	Lower paper feed guide; duplex models	Internal assemblies (4 of 6) on page 283
RM1-6264-000CN	Cartridge-door assembly	Covers on page 275
RM1-6265-000CN	Cover, multipurpose assembly	Covers on page 275
RM1-6266-000CN	Multipurpose lifting plate assembly	Covers on page 275
RM1-6268-000CN	Cassette, paper pickup assembly; duplex models	Internal assemblies (5 of 6) on page 285

Table 4-17 Numerical parts list (continued)

Part number	Description	Table and page
RM1-6270-000CN	Paper-feed guide assembly	Internal assemblies (4 of 6) on page 283
RM1-6271-000CN	Idler roller assembly	Internal assemblies (5 of 6) on page 285
RM1-6272-000CN	Registration roller assembly	Internal assemblies (3 of 6) on page 281
RM1-6273-000CN	Position-guide assembly; duplex models	Internal assemblies (4 of 6) on page 283
RM1-6274-000CN	Fuser assembly 110V	Internal assemblies (5 of 6) on page 285
RM1-6279-000CN	Cassette	Internal assemblies (3 of 6) on page 281
RM1-6279-000CN	Cassette	500-sheet input tray (Tray 3 and Tray 4) on page 289
RM1-6280-000CN	High-voltage power supply; duplex models	Internal assemblies (4 of 6) on page 283
RM1-6281-000CN	Engine controller PCA 110V	Internal assemblies (5 of 6) on page 285
RM1-6283-000CN	Switch assembly, power	Internal assemblies (4 of 6) on page 283
RM1-6284-000CN	Tag holder assembly	Internal assemblies (1 of 6) on page 277
RM1-6289-000CN	Cover, top assembly	Covers on page 275
RM1-6291-000CN	Cover, left	Covers on page 275
RM1-6292-000CN	Cover, rear assembly	Covers on page 275
RM1-6296-000CN	Fuser motor assembly	Internal assemblies (6 of 6) on page 287
RM1-6299-000CN	Cassette, paper pickup assembly; simplex models	Internal assemblies (5 of 6) on page 285
RM1-6300-000CN	High-voltage power supply; simplex models	Internal assemblies (4 of 6) on page 283
RM1-6301-000CN	Paper delivery roller assembly	Internal assemblies (6 of 6) on page 287
RM1-6303-000CN	Separation holder assembly	Internal assemblies (3 of 6) on page 281
RM1-6303-000CN	Separation holder assembly	500-sheet input tray (Tray 3 and Tray 4) on page 289
RM1-6306-000CN	Base plate roller assembly	Internal assemblies (3 of 6) on page 281
RM1-6306-000CN	Base plate roller assembly	500-sheet input tray (Tray 3 and Tray 4) on page 289
RM1-6311-000CN	Face-down roller assembly	Internal assemblies (6 of 6) on page 287

Table 4-17 Numerical parts list (continued)

Part number	Description	Table and page
RM1-6313-000CN	Cassette pickup roller	Internal assemblies (5 of 6) on page 285
RM1-6313-000CN	Pickup roller set, cassette	500-sheet input tray (Tray 3 and Tray 4) on page 289
RM1-6315-000CN	Transfer lower guide assembly	Internal assemblies (3 of 6) on page 281
RM1-6318-000CN	Engine controller PCA 220V	Internal assemblies (5 of 6) on page 285
RM1-6319-000CN	Fuser assembly 220V	Internal assemblies (5 of 6) on page 285
RM1-6321-000CN	Roller, transfer	Internal assemblies (3 of 6) on page 281
RM1-6322-000CN	Laser/scanner	Internal assemblies (1 of 6) on page 277
RM1-6487-000CN	Tray sensor PCA	Internal assemblies (6 of 6) on page 287
RM1-6510-000CN	Multipurpose sensor PCA	Internal assemblies (5 of 6) on page 285
RM1-6511-000CN	TOP sensor PCA	Internal assemblies (4 of 6) on page 283
RM1-6512-000CN	Paper width sensor PCA	Internal assemblies (4 of 6) on page 283
RM1-6514-000CN	Front USB PCA	Internal assemblies (5 of 6) on page 285
RM1-6515-000CN	Environmental sensor assembly	Internal assemblies (5 of 6) on page 285
RM1-6518-000CN	Control panel; duplex models	Covers on page 275
RM1-6519-000CN	Control panel; duplex models	Covers on page 275
WC4-5171-000CN	Microswitch	Internal assemblies (5 of 6) on page 285
WG8-5696-000CN	Photo interrupter, TLP1243	Internal assemblies (1 of 6) on page 277
WG8-5696-000CN	Photo interrupter, TLP1243	Internal assemblies (6 of 6) on page 287

A Service and support

- [Hewlett-Packard limited warranty statement](#)
- [HP's Premium Protection Warranty: LaserJet print cartridge limited warranty statement](#)
- [End User License Agreement](#)
- [Customer self-repair warranty service](#)
- [Customer support](#)
- [Repack the product](#)
- [Service information form](#)

Hewlett-Packard limited warranty statement

HP PRODUCT	DURATION OF LIMITED WARRANTY
HP LaserJet P3015, P3015d, P3015n, CP3015dn, CP3015x	One-year limited warranty

HP warrants to you, the end-user customer, that HP hardware and accessories will be free from defects in materials and workmanship after the date of purchase, for the period specified above. If HP receives notice of such defects during the warranty period, HP will, at its option, either repair or replace products which prove to be defective. Replacement products may be either new or equivalent in performance to new.

HP warrants to you that HP software will not fail to execute its programming instructions after the date of purchase, for the period specified above, due to defects in material and workmanship when properly installed and used. If HP receives notice of such defects during the warranty period, HP will replace software which does not execute its programming instructions due to such defects.

HP does not warrant that the operation of HP products will be uninterrupted or error free. If HP is unable, within a reasonable time, to repair or replace any product to a condition as warranted, you will be entitled to a refund of the purchase price upon prompt return of the product.

HP products may contain remanufactured parts equivalent to new in performance or may have been subject to incidental use.

Warranty does not apply to defects resulting from (a) improper or inadequate maintenance or calibration, (b) software, interfacing, parts or supplies not supplied by HP, (c) unauthorized modification or misuse, (d) operation outside of the published environmental specifications for the product, or (e) improper site preparation or maintenance.

TO THE EXTENT ALLOWED BY LOCAL LAW, THE ABOVE WARRANTIES ARE EXCLUSIVE AND NO OTHER WARRANTY OR CONDITION, WHETHER WRITTEN OR ORAL, IS EXPRESSED OR IMPLIED AND HP SPECIFICALLY DISCLAIMS ANY IMPLIED WARRANTIES OR CONDITIONS OF MERCHANTABILITY, SATISFACTORY QUALITY, AND FITNESS FOR A PARTICULAR PURPOSE. Some countries/regions, states or provinces do not allow limitations on the duration of an implied warranty, so the above limitation or exclusion might not apply to you. This warranty gives you specific legal rights and you might also have other rights that vary from country/region to country/region, state to state, or province to province.

HP's limited warranty is valid in any country/region or locality where HP has a support presence for this product and where HP has marketed this product. The level of warranty service you receive may vary according to local standards. HP will not alter form, fit or function of the product to make it operate in a country/region for which it was never intended to function for legal or regulatory reasons.

TO THE EXTENT ALLOWED BY LOCAL LAW, THE REMEDIES IN THIS WARRANTY STATEMENT ARE YOUR SOLE AND EXCLUSIVE REMEDIES. EXCEPT AS INDICATED ABOVE, IN NO EVENT WILL HP OR ITS SUPPLIERS BE LIABLE FOR LOSS OF DATA OR FOR DIRECT, SPECIAL, INCIDENTAL, CONSEQUENTIAL (INCLUDING LOST PROFIT OR DATA), OR OTHER DAMAGE, WHETHER BASED IN CONTRACT, TORT, OR OTHERWISE. Some countries/regions, states or provinces do not allow the exclusion or limitation of incidental or consequential damages, so the above limitation or exclusion may not apply to you.

THE WARRANTY TERMS CONTAINED IN THIS STATEMENT, EXCEPT TO THE EXTENT LAWFULLY PERMITTED, DO NOT EXCLUDE, RESTRICT OR MODIFY AND ARE IN ADDITION TO THE MANDATORY STATUTORY RIGHTS APPLICABLE TO THE SALE OF THIS PRODUCT TO YOU.

HP's Premium Protection Warranty: LaserJet print cartridge limited warranty statement

This HP product is warranted to be free from defects in materials and workmanship.

This warranty does not apply to products that (a) have been refilled, refurbished, remanufactured or tampered with in any way, (b) experience problems resulting from misuse, improper storage, or operation outside of the published environmental specifications for the printer product or (c) exhibit wear from ordinary use.

To obtain warranty service, please return the product to place of purchase (with a written description of the problem and print samples) or contact HP customer support. At HP's option, HP will either replace products that prove to be defective or refund your purchase price.

TO THE EXTENT ALLOWED BY LOCAL LAW, THE ABOVE WARRANTY IS EXCLUSIVE AND NO OTHER WARRANTY OR CONDITION, WHETHER WRITTEN OR ORAL, IS EXPRESSED OR IMPLIED AND HP SPECIFICALLY DISCLAIMS ANY IMPLIED WARRANTIES OR CONDITIONS OF MERCHANTABILITY, SATISFACTORY QUALITY, AND FITNESS FOR A PARTICULAR PURPOSE.

TO THE EXTENT ALLOWED BY LOCAL LAW, IN NO EVENT WILL HP OR ITS SUPPLIERS BE LIABLE FOR DIRECT, SPECIAL, INCIDENTAL, CONSEQUENTIAL (INCLUDING LOST PROFIT OR DATA), OR OTHER DAMAGE, WHETHER BASED IN CONTRACT, TORT, OR OTHERWISE.

THE WARRANTY TERMS CONTAINED IN THIS STATEMENT, EXCEPT TO THE EXTENT LAWFULLY PERMITTED, DO NOT EXCLUDE, RESTRICT OR MODIFY AND ARE IN ADDITION TO THE MANDATORY STATUTORY RIGHTS APPLICABLE TO THE SALE OF THIS PRODUCT TO YOU.

End User License Agreement

PLEASE READ CAREFULLY BEFORE USING THIS SOFTWARE PRODUCT: This End-User License Agreement (“EULA”) is a contract between (a) you (either an individual or the entity you represent) and (b) Hewlett-Packard Company (“HP”) that governs your use of the software product (“Software”). This EULA does not apply if there is a separate license agreement between you and HP or its suppliers for the Software, including a license agreement in online documentation. The term “Software” may include (i) associated media, (ii) a user guide and other printed materials, and (iii) “online” or electronic documentation (collectively “User Documentation”).

RIGHTS IN THE SOFTWARE ARE OFFERED ONLY ON THE CONDITION THAT YOU AGREE TO ALL TERMS AND CONDITIONS OF THIS EULA. BY INSTALLING, COPYING, DOWNLOADING, OR OTHERWISE USING THE SOFTWARE, YOU AGREE TO BE BOUND BY THIS EULA. IF YOU DO NOT ACCEPT THIS EULA, DO NOT INSTALL, DOWNLOAD, OR OTHERWISE USE THE SOFTWARE. IF YOU PURCHASED THE SOFTWARE BUT DO NOT AGREE TO THIS EULA, PLEASE RETURN THE SOFTWARE TO YOUR PLACE OF PURCHASE WITHIN FOURTEEN DAYS FOR A REFUND OF THE PURCHASE PRICE; IF THE SOFTWARE IS INSTALLED ON OR MADE AVAILABLE WITH ANOTHER HP PRODUCT, YOU MAY RETURN THE ENTIRE UNUSED PRODUCT.

1. **THIRD PARTY SOFTWARE.** The Software may include, in addition to HP proprietary software (“HP Software”), software under licenses from third parties (“Third Party Software” and “Third Party License”). Any Third Party Software is licensed to you subject to the terms and conditions of the corresponding Third Party License. Generally, the Third Party License is located in a file such as license.txt; you should contact HP support if you cannot find any Third Party License. If the Third Party Licenses include licenses that provide for the availability of source code (such as the GNU General Public License) and the corresponding source code is not included with the Software, then check the product support pages of HP’s website (hp.com) to learn how to obtain such source code.

2. **LICENSE RIGHTS.** You will have the following rights provided you comply with all terms and conditions of this EULA:

a. **Use.** HP grants you a license to Use one copy of the HP Software. “Use” means installing, copying, storing, loading, executing, displaying, or otherwise using the HP Software. You may not modify the HP Software or disable any licensing or control feature of the HP Software. If this Software is provided by HP for Use with an imaging or printing product (for example, if the Software is a printer driver, firmware, or add-on), the HP Software may only be used with such product (“HP Product”). Additional restrictions on Use may appear in the User Documentation. You may not separate component parts of the HP Software for Use. You do not have the right to distribute the HP Software.

b. **Copying.** Your right to copy means you may make archival or back-up copies of the HP Software, provided each copy contains all the original HP Software’s proprietary notices and is used only for back-up purposes.

3. **UPGRADES.** To Use HP Software provided by HP as an upgrade, update, or supplement (collectively “Upgrade”), you must first be licensed for the original HP Software identified by HP as eligible for the Upgrade. To the extent the Upgrade supersedes the original HP Software, you may no longer use such HP Software. This EULA applies to each Upgrade unless HP provides other terms with the Upgrade. In case of a conflict between this EULA and such other terms, the other terms will prevail.

4. **TRANSFER.**

a. **Third Party Transfer.** The initial end user of the HP Software may make a one-time transfer of the HP Software to another end user. Any transfer will include all component parts, media, User Documentation, this EULA, and if applicable, the Certificate of Authenticity. The transfer may not be an indirect transfer, such as a consignment. Prior to the transfer, the end user receiving the transferred

Software will agree to this EULA. Upon transfer of the HP Software, your license is automatically terminated.

b. Restrictions. You may not rent, lease or lend the HP Software or Use the HP Software for commercial timesharing or bureau use. You may not sublicense, assign or otherwise transfer the HP Software except as expressly provided in this EULA.

5. PROPRIETARY RIGHTS. All intellectual property rights in the Software and User Documentation are owned by HP or its suppliers and are protected by law, including applicable copyright, trade secret, patent, and trademark laws. You will not remove any product identification, copyright notice, or proprietary restriction from the Software.

6. LIMITATION ON REVERSE ENGINEERING. You may not reverse engineer, decompile, or disassemble the HP Software, except and only to the extent that the right to do so is allowed under applicable law.

7. CONSENT TO USE OF DATA. HP and its affiliates may collect and use technical information you provide in relation to (i) your Use of the Software or the HP Product, or (ii) the provision of support services related to the Software or the HP Product. All such information will be subject to HP's privacy policy. HP will not use such information in a form that personally identifies you except to the extent necessary to enhance your Use or provide support services.

8. LIMITATION OF LIABILITY. Notwithstanding any damages that you might incur, the entire liability of HP and its suppliers under this EULA and your exclusive remedy under this EULA will be limited to the greater of the amount actually paid by you for the Product or U.S. \$5.00. TO THE MAXIMUM EXTENT PERMITTED BY APPLICABLE LAW, IN NO EVENT WILL HP OR ITS SUPPLIERS BE LIABLE FOR ANY SPECIAL, INCIDENTAL, INDIRECT, OR CONSEQUENTIAL DAMAGES (INCLUDING DAMAGES FOR LOST PROFITS, LOST DATA, BUSINESS INTERRUPTION, PERSONAL INJURY, OR LOSS OF PRIVACY) RELATED IN ANY WAY TO THE USE OF OR INABILITY TO USE THE SOFTWARE, EVEN IF HP OR ANY SUPPLIER HAS BEEN ADVISED OF THE POSSIBILITY OF SUCH DAMAGES AND EVEN IF THE ABOVE REMEDY FAILS OF ITS ESSENTIAL PURPOSE. Some states or other jurisdictions do not allow the exclusion or limitation of incidental or consequential damages, so the above limitation or exclusion may not apply to you.

9. U.S. GOVERNMENT CUSTOMERS. If you are a U.S. Government entity, then consistent with FAR 12.211 and FAR 12.212, Commercial Computer Software, Computer Software Documentation, and Technical Data for Commercial Items are licensed under the applicable HP commercial license agreement.

10. COMPLIANCE WITH EXPORT LAWS. You will comply with all laws, rules, and regulations (i) applicable to the export or import of the Software, or (ii) restricting the Use of the Software, including any restrictions on nuclear, chemical, or biological weapons proliferation.

11. RESERVATION OF RIGHTS. HP and its suppliers reserve all rights not expressly granted to you in this EULA.

(c) 2007 Hewlett-Packard Development Company, L.P.

Rev. 11/06

Customer self-repair warranty service

HP products are designed with many Customer Self Repair (CSR) parts to minimize repair time and allow for greater flexibility in performing defective parts replacement. If during the diagnosis period, HP identifies that the repair can be accomplished by the use of a CSR part, HP will ship that part directly to you for replacement. There are two categories of CSR parts: 1) Parts for which customer self repair is mandatory. If you request HP to replace these parts, you will be charged for the travel and labor costs of this service. 2) Parts for which customer self repair is optional. These parts are also designed for Customer Self Repair. If, however, you require that HP replace them for you, this may be done at no additional charge under the type of warranty service designated for your product.

Based on availability and where geography permits, CSR parts will be shipped for next business day delivery. Same-day or four-hour delivery may be offered at an additional charge where geography permits. If assistance is required, you can call the HP Technical Support Center and a technician will help you over the phone. HP specifies in the materials shipped with a replacement CSR part whether a defective part must be returned to HP. In cases where it is required to return the defective part to HP, you must ship the defective part back to HP within a defined period of time, normally five (5) business days. The defective part must be returned with the associated documentation in the provided shipping material. Failure to return the defective part may result in HP billing you for the replacement. With a customer self repair, HP will pay all shipping and part return costs and determine the courier/carrier to be used.

Customer support

<hr/>	
Get telephone support, free during your warranty period, for your country/region	Country/region phone numbers are on the flyer that was in the box with your product or at www.hp.com/support/ .
Have the product name, serial number, date of purchase, and problem description ready.	
<hr/>	
Get 24-hour Internet support	www.hp.com/support/ljp3010series
<hr/>	
Get support for products used with a Macintosh computer	www.hp.com/go/macosex
<hr/>	
Download software utilities, drivers, and electronic information	www.hp.com/go/ljp3010series_software
<hr/>	
Order additional HP service or maintenance agreements	www.hp.com/go/carepack
<hr/>	

Repack the product

If HP Customer Care determines that your product needs to be returned to HP for repair, follow these steps to repack the product before shipping it.

△ **CAUTION:** Shipping damage as a result of inadequate packing is the customer's responsibility.

1. Remove and retain any DIMMs cards that you have purchased and installed in the product.

△ **CAUTION:** Static electricity can damage electronic parts. When handling DIMMs, either wear an antistatic wrist strap, or frequently touch the surface of the DIMM antistatic package and then touch bare metal on the product. To remove the DIMMs, see [DIMM cover and DIMM on page 57](#).

2. Remove and retain the print cartridge.

△ **CAUTION:** It is *extremely important* to remove the print cartridge before shipping the product. A print cartridge that remains in the product during shipping can leak and cover the product engine and other parts with toner.

To prevent damage to the print cartridge, avoid touching the roller on it, and store the print cartridge in its original packing material or so that it is not exposed to light.

3. Remove and retain the power cable, interface cable, and optional accessories, such as an EIO card.
4. If possible, include print samples and 50 to 100 sheets of paper or other print media that did not print correctly.
5. In the U.S., call HP Customer Care to request new packing material. In other areas, use the original packing material, if possible. Hewlett-Packard recommends insuring the equipment for shipment.

Service information form

WHO IS RETURNING THE EQUIPMENT?

Date:

Person to contact:

Phone:

Alternate contact:

Phone:

Return shipping address:

Special shipping instructions:

WHAT ARE YOU SENDING?

Model name:

Model number:

Serial number:

Please attach any relevant printouts. Do NOT ship accessories (manuals, cleaning supplies, and so on) that are not required to complete the repair.

HAVE YOU REMOVED THE PRINT CARTRIDGES?

You must remove them before shipping the printer, unless a mechanical problem prevents you from doing so.

☐ Yes.☐ No, I cannot remove them.

WHAT NEEDS TO BE DONE? (Attach a separate sheet if necessary.)

1. Describe the conditions of the failure. (What was the failure? What were you doing when the failure occurred? What software were you running? Is the failure repeatable?)

2. If the failure is intermittent, how much time elapses between failures?

3. If the unit connected to any of the following, give the manufacturer and model number.

Personal computer:

Modem:

Network:

4. Additional comments:

HOW WILL YOU PAY FOR THE REPAIR?☐ Under warranty

Purchase/received date:

(Attach proof of purchase or receiving document with original received date.)

☐ Maintenance contract number:☐ Purchase order number:

Except for contract and warranty service, a purchase order number and/or authorized signature must accompany any request for service. If standard repair prices do not apply, a minimum purchase order is required. Standard repair prices can be obtained by contacting an HP-authorized repair center.

Authorized signature:

Phone:

Billing address:

Special billing instructions:

B Specifications

- [Physical specifications](#)
- [Electrical specifications](#)
- [Acoustic specifications](#)
- [Environmental specifications](#)

Physical specifications

Table B-1 Product dimensions and weights

Product model	Height	Depth	Width	Weight
Base, d, n, and dn models	316 mm (12.4 in)	412 mm (16.2 in)	448 mm (17.6 in)	15.9 kg (35.1 lb)
x model	456 mm (17.9 in)	412 mm (16.2 in)	448 mm (17.6 in)	21.2 kg (46.8 lb)
Optional 500-sheet feeder	140 mm (5.5 in)	412 mm (16.2 in)	448 mm (17.6 in)	5.3 kg (11.7 lb)

Table B-2 Product dimensions with all doors and trays fully opened

Product model	Height	Depth	Width
Base, d, n, and dn models	347 mm (13.7 in)	1040 mm (41.0 in)	448 mm (17.6 in)
x model	487 mm (19.2 in)	1040 mm (41.0 in)	448 mm (17.6 in)

Electrical specifications

⚠ WARNING! Power requirements are based on the country/region where the product is sold. Do not convert operating voltages. This can damage the product and void the product warranty.

Table B-3 Power requirements

Specification	110-volt models	220-volt models
Power requirements	100 to 127 Vac	220 to 240 Vac
	50/60 Hz	50/60 Hz
Rated current	8.6 Amps	4.2 Amps

Table B-4 Power consumption (average, in watts)¹

Model	Printing ²	Ready or standby ⁴	Sleep ³	Off
HP LaserJet P3015	780 W	14.5 W	8.5 W	0.6 W

¹ Values are based on preliminary data. See www.hp.com/go/ljp3010series_regulatory for current information.

² Power numbers are the highest values measured using all standard voltages.

³ Default time from Ready mode to Sleep = 30 minutes.

⁴ Heat dissipation in Ready mode = 50 BTU/hour.

Acoustic specifications

Table B-5 Sound power and pressure level

Product model	Sound power level ^{1, 2}	Declared per ISO 9296
HP LaserJet P3015 models	Printing	L _{WAd} = 6.8 Bels (A) [68 dB(A)]
	Ready	Inaudible

Table B-5 Sound power and pressure level (continued)

Product model	Sound power level ^{1, 2}	Declared per ISO 9296
Product model	Sound pressure level bystander ^{1, 2}	Declared per ISO 9296
HP LaserJet P3015 models	Printing	L_{pAm} =54 dB (A)
	Ready	Inaudible

¹ Values are based on preliminary data. See www.hp.com/support/ljp3010series for current information.

² Configuration tested: HP LaserJet P3015dn printing simplex on A4 paper.

Environmental specifications

Table B-6 Necessary conditions

Environmental condition	Recommended	Allowed
Temperature (Product and print cartridge)	17.5° to 25°C (63° to 77°)	-20° to 60°C (-4° to 140°F)
Relative humidity	30% to 70%	10% to 90%

C Regulatory information

- [FCC regulations](#)
- [Environmental product stewardship program](#)
- [Declaration of conformity](#)
- [Safety statements](#)

FCC regulations

This equipment has been tested and found to comply with the limits for a Class B digital device, pursuant to Part 15 of the FCC rules. These limits are designed to provide reasonable protection against harmful interference in a residential installation. This equipment generates, uses, and can radiate radio frequency energy. If this equipment is not installed and used in accordance with the instructions, it may cause harmful interference to radio communications. However, there is no guarantee that interference will not occur in a particular installation. If this equipment does cause harmful interference to radio or television reception, which can be determined by turning the equipment off and on, the user is encouraged to try to correct the interference by one or more of the following measures:

- Reorient or relocate the receiving antenna.
- Increase separation between equipment and receiver.
- Connect equipment to an outlet on a circuit different from that to which the receiver is located.
- Consult your dealer or an experienced radio/TV technician.



NOTE: Any changes or modifications to the printer that are not expressly approved by HP could void the user's authority to operate this equipment.

Use of a shielded interface cable is required to comply with the Class B limits of Part 15 of FCC rules.

Environmental product stewardship program

Protecting the environment

Hewlett-Packard Company is committed to providing quality products in an environmentally sound manner. This product has been designed with several attributes to minimize impacts on our environment.

Ozone production

This product generates no appreciable ozone gas (O₃).

Power consumption

Power usage drops significantly while in Ready and Sleep mode, which saves natural resources and saves money without affecting the high performance of this product. To determine the ENERGY STAR® qualification status for this product, see the Product Data Sheet or Specifications Sheet. Qualified products are also listed at:

www.hp.com/go/energystar

Toner consumption

EconoMode uses less toner, which might extend the life of the print cartridge.

Paper use

This product's optional automatic duplex feature (two-sided printing) and N-up printing (multiple pages printed on one page) capability can reduce paper usage and the resulting demands on natural resources.


Plastics

Plastic parts over 25 grams are marked according to international standards that enhance the ability to identify plastics for recycling purposes at the end of the product's life.

HP LaserJet print supplies

It's easy to return and recycle your HP LaserJet print cartridges after use—free of charge—with HP Planet Partners. Multilingual program information and instructions are included in every new HP LaserJet print cartridge and supplies package. You help reduce the toll on the environment further when you return multiple cartridges together rather than separately.

HP is committed to providing inventive, high-quality products and services that are environmentally sound, from product design and manufacturing to distribution, customer use and recycling. When you participate in the HP Planet Partners program, we ensure your HP LaserJet print cartridges are recycled properly, processing them to recover plastics and metals for new products and diverting millions of tons of waste from landfills. Since this cartridge is being recycled and used in new materials, it will not be returned to you. Thank you for being environmentally responsible!

 **NOTE:** Use the return label to return original HP LaserJet print cartridges only. Please do not use this label for HP inkjet cartridges, non-HP cartridges, refilled or remanufactured cartridges or warranty returns. For information about recycling your HP inkjet cartridges please go to <http://www.hp.com/recycle>.

Return and recycling instructions

United States and Puerto Rico

The enclosed label in the HP LaserJet toner cartridge box is for the return and recycling of one or more HP LaserJet print cartridges after use. Please follow the applicable instructions below.

Multiple returns (more than one cartridge)

1. Package each HP LaserJet print cartridge in its original box and bag.
2. Tape the boxes together using strapping or packaging tape. The package can weigh up to 31 kg (70 lb).
3. Use a single pre-paid shipping label.

OR

1. Use your own suitable box, or request a free bulk collection box from www.hp.com/recycle or 1-800-340-2445 (holds up to 31 kg (70 lb) of HP LaserJet print cartridges).
2. Use a single pre-paid shipping label.

Single returns

1. Package the HP LaserJet print cartridge in its original bag and box.
2. Place the shipping label on the front of the box.

Shipping

For all HP LaserJet print cartridge recycling returns, give the package to UPS during your next delivery or pickup, or take it to an authorized UPS drop-off center. For the location of your local UPS drop-off center, call 1-800-PICKUPS or visit www.ups.com. If you are returning via USPS label, give the package to a U.S. Postal Service carrier or drop off at a U.S. Postal Service Office. For more information, or to order additional labels or boxes for bulk returns, visit www.hp.com/recycle or call 1-800-340-2445. Requested UPS pickup will be charged normal pickup rates. Information subject to change without notice.

Residents of Alaska and Hawaii

Do not use the UPS label. Call 1-800-340-2445 for information and instructions. The U.S. Postal Service provides no-cost cartridge return transportation services under an arrangement with HP for Alaska and Hawaii.

Non-U.S. returns

To participate in HP Planet Partners return and recycling program, just follow the simple directions in the recycling guide (found inside the packaging of your new product supply item) or visit www.hp.com/recycle. Select your country/region for information on how to return your HP LaserJet printing supplies.

Paper

This product is capable of using recycled papers when the paper meets the guidelines outlined in the *HP LaserJet Printer Family Print Media Guide*. This product is suitable for the use of recycled paper according to EN12281:2002.

Material restrictions

This HP product does not contain added mercury.

This HP product contains a battery that might require special handling at end-of-life. The batteries contained in or supplied by Hewlett-Packard for this product include the following:

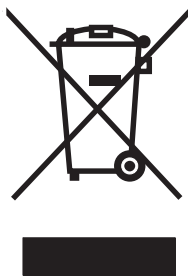
HP LaserJet P3010 Series	
Type	Carbon monofluoride lithium
Weight	1.5 g
Location	On formatter board
User-removable	No



廢電池請回收

For recycling information, you can go to www.hp.com/recycle, or contact your local authorities or the Electronics Industries Alliance: www.eiae.org.

Disposal of waste equipment by users in private households in the European Union



This symbol on the product or on its packaging indicates that this product must not be disposed of with your other household waste. Instead, it is your responsibility to dispose of your waste equipment by handing it over to a designated collection point for the recycling of waste electrical and electronic equipment. The separate collection and recycling of your waste equipment at the time of disposal will help to conserve natural resources and ensure that it is recycled in a manner that protects human health and the environment. For more information about where you can drop off your waste equipment for recycling, please contact your local city office, your household waste disposal service or the shop where you purchased the product.

Chemical substances

HP is committed to providing our customers with information about the chemical substances in our products as needed to comply with legal requirements such as REACH (Regulation EC No 1907/2006 of the European Parliament and the Council). A chemical information report for this product can be found at: www.hp.com/go/reach.

Material Safety Data Sheet (MSDS)

Material Safety Data Sheets (MSDS) for supplies containing chemical substances (for example, toner) can be obtained by accessing the HP Web site at www.hp.com/go/msds or www.hp.com/hpinfo/community/environment/productinfo/safety.

For more information

To obtain information about these environmental topics:

- Product environmental profile sheet for this and many related HP products
- HP's commitment to the environment
- HP's environmental management system
- HP's end-of-life product return and recycling program
- Material Safety Data Sheets

Visit www.hp.com/go/environment or www.hp.com/hpinfo/globalcitizenship/environment.

Declaration of conformity

Declaration of Conformity

according to ISO/IEC 17050-1 and EN 17050-1, DoC#: BOISB-0804-00-rel.1.0

Manufacturer's Name: Hewlett-Packard Company
Manufacturer's Address: 11311 Chinden Boulevard,
Boise, Idaho 83714-1021, USA

declares, that the product

Product Name: HP LaserJet P3010 series
Including: CE530A - Optional 500-sheet tray

Regulatory Model Number²⁾: BOISB-0804-00
Product Options: ALL


Print Cartridges: CE255A /CE255X

conforms to the following Product Specifications:

Safety: IEC 60950-1:2001 / EN60950-1: 2001 +A11
IEC 60825-1:1993 +A1 +A2 / EN 60825-1:1994 +A1 +A2 (Class 1 Laser/LED Product)
GB4943-2001

EMC: CISPR22:2005 / EN 55022:2006 - Class B¹⁾
EN 61000-3-2:2006
EN 61000-3-3:1995 +A1
EN 55024:1998 +A1 +A2
FCC Title 47 CFR, Part 15 Class B²⁾ / ICES-003, Issue 4
GB9254-1998, GB17625.1-2003

Supplementary Information:

The product herewith complies with the requirements of the EMC Directive 2004/108/EC and the Low Voltage Directive 2006/95/EC, and carries the CE-Marking  accordingly.

This Device complies with Part 15 of the FCC Rules. Operation is subject to the following two conditions: (1) this device may not cause harmful interference, and (2) this device must accept any interference received, including interference that may cause undesired operation.

1) The product was tested in a typical configuration with Hewlett-Packard Personal Computer Systems.

2) For regulatory purposes, this product is assigned a Regulatory model number. This number should not be confused with the marketing name or the product number(s).

Boise, Idaho , USA

May 30, 2009

For regulatory topics only:

European Contact: Your Local Hewlett-Packard Sales and Service Office or Hewlett-Packard GmbH, Department HQ-TRE / Standards Europe,, Herrenberger Strasse 140, , D-71034, Böblingen, (FAX: +49-7031-14-3143), www.hp.com/go/certificates

USA Contact: Product Regulations Manager, Hewlett-Packard Company,, PO Box 15, Mail Stop 160, Boise, ID 83707-0015, , (Phone: 208-396-6000)

Safety statements

Laser safety

The Center for Devices and Radiological Health (CDRH) of the U.S. Food and Drug Administration has implemented regulations for laser products manufactured since August 1, 1976. Compliance is mandatory for products marketed in the United States. The device is certified as a “Class 1” laser product under the U.S. Department of Health and Human Services (DHHS) Radiation Performance Standard according to the Radiation Control for Health and Safety Act of 1968. Since radiation emitted inside the device is completely confined within protective housings and external covers, the laser beam cannot escape during any phase of normal user operation.

⚠ **WARNING!** Using controls, making adjustments, or performing procedures other than those specified in this user guide may result in exposure to hazardous radiation.

Canadian DOC regulations

Complies with Canadian EMC Class B requirements.

« Conforme à la classe B des normes canadiennes de compatibilité électromagnétiques. « CEM ». »

VCCI statement (Japan)

この装置は、情報処理装置等電波障害自主規制協議会（VCCI）の基準に基づくクラスB情報技術装置です。この装置は、家庭環境で使用することを目的としていますが、この装置がラジオやテレビジョン受信機に近接して使用されると、受信障害を引き起こすことがあります。
取扱説明書に従って正しい取り扱いをして下さい。

Power cord statement (Japan)

製品には、同梱された電源コードをお使い下さい。
同梱された電源コードは、他の製品では使用出来ません。

EMC statement (Korea)

B급 기기 (가정용 방송통신기기)	이 기기는 가정용(B급)으로 전자파적합등록을 한 기기로서 주로 가정에서 사용하는 것을 목적으로 하며, 모든 지역에서 사용할 수 있습니다.
-----------------------	--

Laser statement for Finland

Luokan 1 laserlaite

Klass 1 Laser Apparat

HP LaserJet P3015, P3015d, P3015dn, P3015x, laserkirjoitin on käyttäjän kannalta turvallinen luokan 1 laserlaite. Normaalisessa käytössä kirjoittimen suojakotelointi estää lasersäteiden pääsyn laitteen ulkopuolelle. Laitteen turvallisuusluokka on määritetty standardin EN 60825-1 (1994) mukaisesti.

VAROITUS !

Laitteen käyttäminen muulla kuin käyttöohjeessa mainitulla tavalla saattaa altistaa käyttäjän turvallisuusluokan 1 ylittävälle näkymättömälle lasersäteilylle.

VARNING !

Om apparaten används på annat sätt än i bruksanvisning specificerats, kan användaren utsättas för osynlig laserstrålning, som överskrider gränsen för laserklass 1.

HUOLTO

HP LaserJet P3015, P3015d, P3015dn, P3015x - kirjoittimen sisällä ei ole käyttäjän huollettavissa olevia kohteita. Laitteen saa avata ja huoltaa ainoastaan sen huoltamiseen koulutettu henkilö. Tällaiseksi huoltotoimenpiteeksi ei katsota väriainekasetin vaihtamista, paperiradan puhdistusta tai muita käyttäjän käsikirjassa lueteltuja, käyttäjän tehtäväksi tarkoitettuja ylläpitotoimia, jotka voidaan suorittaa ilman erikoistyökaluja.

VARO !

Mikäli kirjoittimen suojakotelo avataan, olet alttiina näkymättömälle lasersäteilylle laitteen ollessa toiminnassa. Älä katso säteeseen.

VARNING !

Om laserprinterns skyddshölje öppnas då apparaten är i funktion, utsättas användaren för osynlig laserstrålning. Betrakta ej strålen. Tiedot laitteessa käytettävän laserdiodin säteilyominaisuuksista: Aallonpituus 775-795 nm Teho 5 m W Luokan 3B laser.

Substances Table (China)

有毒有害物质表

根据中国电子信息产品污染控制管理办法的要求而出台

部件名称	有毒有害物质和元素					
	铅 (Pb)	汞 (Hg)	镉 (Cd)	六价铬 (Cr(VI))	多溴联苯 (PBB)	多溴二苯醚 (PBDE)
打印引擎	X	0	X	0	0	0
控制面板	0	0	0	0	0	0
塑料外壳	0	0	0	0	0	0
格式化板组件	X	0	0	0	0	0
碳粉盒	X	0	0	0	0	0

3685

0：表示在此部件所用的所有同类材料中，所含的此有毒或有害物质均低于 SJ/T11363-2006 的限制要求。
X：表示在此部件所用的所有同类材料中，至少一种所含的此有毒或有害物质高于 SJ/T11363-2006 的限制要求。

注：引用的“环保使用期限”是根据在正常温度和湿度条件下操作使用产品而确定的。

Index

A

- accessories
 - ordering 268
- acoustic specifications 308
- address, TCP/IPv6 189
- after service checklist 48
- AppleTalk settings 190

B

- batteries included 315
- black page, problem-solving 253
- blank page
 - problem-solving 247
- blank pages
 - troubleshooting 257
- blurred print, problem-solving 254
- both sides, printing on
 - Show Me How menu 174

C

- cables
 - USB, troubleshooting 257
- Canadian DOC regulations 318
- cartridge
 - memory tag 32
 - ordering 268
 - part number 268
 - removing 52
- cartridge-door assembly
 - removing 71
- cartridges
 - recycling 313
 - warranty 299
- cassette
 - Tray 2, removing 54
 - Tray 3, removing 54
 - Tray 4, removing 54
- cautions iii
- characters, misformed 251

checklists

- after service 48
- preservice 48
- circuit diagram 170
- cold reset 262
- configuration page, printing 176
- Configure device menu 178
- control panel

- cleaning page, printing 172
- default settings, restoring 262
- messages, types of 197
- removing 74

control-panel menus

- accessing 174
- Configure device 178
- Diagnostics 194
- EIO <X> Jetdirect menu 187
- Embedded Jetdirect 187
- I/O (input/output) 187
- Information 176
- Manage supplies 177
- opening 174
- Paper handling 177
- PCL sub-menu 179
- Print quality 180
- Printing 178
- Resets 194
- Retrieve job 175
- Service 259
- Show Me How 174
- System setup 183

conventions, document iii

covers

- cartridge-door assembly,
 - removing 71
- DIMM, removing 57
- formatter, removing 60
- front right, removing 76
- left, removing 66

- lower-right and bracket,
 - removing 80
- multipurpose tray cover,
 - removing 69
- right, removing 76
- right-rear, removing 68
- top cover, removing 84
- top-right, removing 73
- tray 1 cover, removing 69

- creased paper, problem-solving 252

- crooked pages 251

- curled paper, problem-solving 252

customer support

- online 303
- repacking product 304
- service information form 305

D

- date code, service ID 261
- declaration of conformity 317
- default settings, restoring
 - cold reset 262
- demonstration page, printing 176
- density
 - problem-solving 247
- developing stage 29
- DHCP settings 188
- diagnostics
 - engine 134
 - networks 191
 - skip disk-load 260
- Diagnostics menu 194
- dimensions, product 308
- DIMM
 - removing 57
- DIMM cover
 - removing 57

- disk
 - initialization 260
- disposal, end-of-life 315
- DLC/LLC settings 190
- DNS settings
 - IPv4 189
 - IPv6 189
- document conventions iii
- doors
 - rear assembly, removing 62
- dots, problem-solving 248, 253
- double-sided printing
 - Show Me How menu 174
- dropouts, problem-solving 249
- drum cleaning stage 31
- duplex media-feed assembly
 - removing 104
- duplexer
 - Show Me How menu 174
- E**
- ECU
 - removing 110
- EIO <X> Jetdirect menu 187
- EIO cards
 - settings 187
- electrical specifications 308
- electrostatic discharge (ESD) 46
- Embedded Jetdirect menu 187
- end-of-life disposal 315
- energy specifications 308
- engine test 134
- engine-control system 6
- envelopes
 - jams 245
 - wrinkled, problem-solving 252
- environment for product
 - specifications 309
- environmental stewardship
 - program 313
- error messages
 - event log, listed
 - numerically 217
 - types of 197
- ESD (electrostatic discharge) 46
- European Union, waste
 - disposal 315
- event log
 - messages, listed
 - numerically 217

- print 215
- sample 216
- view 215
- F**
- fan sub, removing 118
- file directory, printing 176
- Finnish laser safety
 - statement 319
- firmware, upgrading 263
- font list, printing
 - PCL 177
 - PS 177
- formatter
 - ordering 269
 - part number 269
 - service ID 261
- formatter cover
 - removing 60
- formatter lights 133
- formatter PCA
 - removing 60
- front-right cover, removing 76
- fuser
 - removing 100
- fuser motor, removing 117
- fusing stage 30
- G**
- gray background, problem-solving 250
- H**
- hard disk
 - initialization 260
- heartbeat LED 133
- help, Show Me How menu 174
- HP Customer Care 303
- HP Jetdirect print server
 - firmware updates 266
 - lights 133
- HP Web Jetadmin
 - firmware updates 265
- humidity
 - specifications 309
- I**
- I/O (input/output) menu 187
- image defects, problem-solving 247

- image repetition, problem-solving 254
- Information menu 176
- initializing
 - hard disk 260
- input trays
 - configuring 177
- IP address
 - default 188
- IPv4 settings 188
- IPv6 settings 189
- IPX/SPX settings 190
- J**
- jams
 - common causes of 219
 - envelopes 245
 - preventing 240
 - recovery 241
 - Show Me How menu 174
- Japanese VCCI statement 318
- Jetadmin
 - firmware updates 265
- Jetdirect print server
 - firmware updates 266
 - lights 133
- K**
- Korean EMC statement 318
- L**
- laser beam exposure stage 28
- laser safety statements 318, 319
- laser/scanner
 - operations 24
 - removing 107
- left cover
 - removing 66
- license, software 300
- light print
 - problem-solving 247
- lights
 - formatter 133
- lines horizontal, problem-solving 249, 253
- lines vertical, problem-solving 252
- lines, problem-solving 249, 253
- link speed settings 193
- loading
 - Show Me How menu 174

- location
 - assemblies (base product) 272
 - covers 274
 - internal assemblies 276
 - optional trays or accessories (base product) 273
- log of events
 - messages, listed numerically 217
- loose toner, problem-solving 250
- lower-right cover and bracket, removing 80
- M**
- Macintosh
 - support 303
- Manage supplies menu 177
- material restrictions 315
- Material Safety Data Sheet (MSDS) 316
- media
 - Show Me How menu 174
- memory
 - DIMM, removing 57
 - NVRAM initialization 260
 - ordering 269
 - part numbers 269
 - print cartridge 32
- menu map, printing 176
- menus, control panel
 - default settings, restoring 262
- menus, control-panel
 - accessing 174
 - Configure device 178
 - Diagnostics 194
 - EIO <X> Jetdirect menu 187
 - Embedded Jetdirect 187
 - I/O (input/output) 187
 - Information 176
 - Manage supplies 177
 - Paper handling 177
 - PCL sub-menu 179
 - Print quality 180
 - Printing 178
 - Resets 194
 - Retrieve job 175
 - Service 259
 - Show Me How 174
 - System setup 183
- mercury-free product 315
- messages
 - event log, listed numerically 217
 - types of 197
- misformed characters, problem-solving 251
- multipurpose tray cover
 - removing 69
- N**
- networks
 - diagnostics 191
 - link speed settings 193
 - protocols 187
 - security 187
 - settings 187
- noise specifications 308
- notes iii
- NVRAM initialization 260
- O**
- online support 303
- operating environment
 - specifications 309
- operations
 - engine-control system 6
 - laser/scanner 24
 - print cartridge memory 32
- ordering
 - 500-sheet tray 269
 - formatter 269
 - memory 269
 - print cartridge 268
 - product documents 268
 - supplies and accessories 268
 - whole-unit replacement 270
- P**
- packaging product 304
- pages
 - blank 257
 - not printing 257
 - printing slowly 257
- paper
 - curled 252
 - Show Me How menu 174
 - skewed 251
 - wrinkled 252
- Paper handling menu 177
- part number
 - 500-sheet tray 269
 - formatter 269
 - memory 269
 - print cartridge 268
 - whole-unit replacement 270
- parts
 - 500-sheet input tray 288
 - assemblies (base product) 272
 - covers 274
 - internal assemblies 276
 - optional trays or accessories (base product) 273
- PCL font list, printing 177
- PCL sub-menu 179
- physical specifications 308
- post-service tests 48
- power specifications 308
- preservice checklist 48
- primary charging stage 28
- print cartridge
 - memory tag 32
 - ordering 268
 - part number 268
 - removing 52
- print cartridges
 - recycling 313
 - warranty 299
- print quality
 - black page 253
 - blurred 254
 - dropouts 249
 - gray background 250
 - horizontal lines 249
 - image defects 247
 - light print 247
 - lines 249
 - loose toner 250
 - misformed characters 251
 - repeating defects 251
 - repetitive images 254
 - scattered lines 253
 - smeared toner 250
 - specks 248
 - tire tracks 253
 - white horizontal lines 253
 - white lines vertical 252
 - white spots 253
- Print quality menu 180

- print-quality test 48
 - printing
 - troubleshooting 257
 - Printing menu 178
 - problem-solving
 - black page 253
 - blank page 247
 - blurred print 254
 - checklist 128
 - curled paper 252
 - dropouts 249
 - event-log messages, numerical list 217
 - gray background 250
 - image defects 247
 - light print 247
 - lines 249
 - lines horizontal 249, 253
 - lines vertical 252
 - messages, types of 197
 - networks 191
 - repeating defects 251
 - repetitive images 254
 - scattered lines 253
 - Show Me How menu 174
 - skewed pages 251
 - smeared toner 250
 - specks 248
 - text quality 251, 254
 - tire tracks 253
 - white spots 253
 - wrinkled paper 252
 - product settings
 - configuring 178
 - protocols, network 187
 - proxy server settings 190
 - PS font list, printing 177
- R**
- rear-door assembly
 - removing 62
 - recycling
 - HP printing supplies returns and environmental program 314
 - registration assembly
 - removing 102
 - remote firmware update (RFU) 263
 - removing parts
 - cautions for 46
 - checklists 48
 - print cartridge 52
 - service approach 48
 - sub cover 52
 - tray cassette 54
 - repacking product 304
 - repair approach 48
 - repeating defects, problem-solving 251, 254
 - replacing parts
 - cautions for 46
 - service approach 48
 - reset, cold 262
 - Resets menu 194
 - Retrieve job menu 175
 - right cover, removing 76
 - right-rear cover, removing 68
- S**
- safety statements 318, 319
 - screwdrivers, required 46
 - screws
 - replacing 46
 - types of 47
 - security
 - settings 187
 - sensor tests, manual
 - duplex sensor (C) 142
 - face up detect sensor (H) 147
 - FD tray full sensor (G) 146
 - fuser output sensor (B) 141
 - paper width sensor 1 (D) 143
 - rear cover open sensor (I) 149
 - top cover open sensor (I) 148
 - TOP sensor (A) 140
 - Tray 1 paper sensor (K) 150
 - Tray 2 detect sensor (M) 152
 - Tray 2 paper sensor (L) 151
 - Tray 3 detect sensor (O) 154
 - Tray 3 feed sensor (E) 144
 - Tray 3 paper sensor (N) 153
 - Tray 4 detect sensor (Q) 156
 - Tray 4 feed sensor (F) 145
 - Tray 4 paper sensor (P) 155
 - separation stage 30
 - service
 - approach 48
 - information form 305
 - repacking product 304
 - service ID 261
 - Service menu 259
 - settings
 - cold reset 262
 - configuring 178
 - NVRAM initialization 260
 - shipping product 304
 - Show Me How menu 174
 - skewed pages 251
 - skip disk-load 260
 - Sleep mode
 - power specifications 308
 - smeared toner, problem-solving 250
 - software
 - software license agreement 300
 - solving
 - direct-connect problems 258
 - network problems 258
 - specifications
 - acoustic 308
 - electrical 308
 - operating environment 309
 - physical 308
 - specks, problem-solving 248, 253
 - spots, problem-solving 248, 253
 - static precautions 46
 - status
 - messages, types of 197
 - sub cover
 - removing 52
 - supplies
 - managing 177
 - ordering 268
 - recycling 313
 - supplies status page, printing 176
 - supply messages
 - configuring 177
 - support
 - online 303
 - repacking product 304
 - service information form 305
 - System setup menu 183

T

- TCP/IP settings
 - 187
- technical support
 - online 303
 - repacking product 304
 - service information form 305
- temperature specifications 309
- tests
 - engine 134
 - networks 191
 - post-service 48
 - print-quality 48
 - sensor 137
 - skip disk-load 260
- text, problem-solving
 - blurred 254
 - misformed characters 251
- tips iii
- tire tracks, problem-solving 253
- toner
 - output quality, problem-solving 250
- toner cartridges. *See* print cartridges
- tools, required 46
- top cover, removing 84
- top-right cover, removing 73
- transfer stage 30
- tray 1 cover
 - removing 69
- Tray 3
 - physical specifications 308
- Tray 4
 - physical specifications 308
- trays
 - removing 54
 - Show Me How menu 174
- trays, input
 - configuring 177
- troubleshooting
 - blank pages 257
 - direct-connect problems 258
 - duplexing 246
 - engine test 134
 - network problems 258
 - pages not printing 257
 - pages printing slowly 257
 - paper handling problems 242
 - service approach 48

- transparencies 244

- USB cables 257

- two-sided printing

- Show Me How menu 174

U

- upgrading firmware 263

- usage page, printing 176

- USB port

- troubleshooting 257

V

- voltage specifications 308

W

- warnings iii

- warranty

- customer self repair 302

- license 300

- print cartridges 299

- product 298

- service ID 261

- wavy paper, problem-solving 252

- Web Jetadmin

- firmware updates 265

- Web sites

- customer support 303

- Macintosh customer

- support 303

- Material Safety Data Sheet (MSDS) 316

- weight, product 308

- white horizontal lines or spots,

- problem-solving 253

- white vertical lines or spots,

- problem-solving 252

- wiring diagram 170

- wrinkled paper, problem-solving 252



CE524-90909

