

# Preboot menu options

If an error occurs while the product is initializing, an error message appears on the control-panel display. The user can access the **Preboot** menus. The error menu item will not be seen if an error did not occur.

Table 3-51 Preboot menu options (1 of 5)

Menu option	First level	Second level	Third level	Description
Continue				<p>Selecting the <b>Continue</b> item exits the <b>Preboot</b> menu and continues the normal boot process.</p> <p>If a selection is not made in the initial menu within 30 seconds, the product returns to a normal boot (the same as selecting <b>Continue</b>).</p> <p>If the user navigates to another menu, the timeout does not apply.</p>
Sign In				<p>Enter the administrator PIN or service PIN if one is required to access the <b>Preboot</b> menu.</p>

**Table 3-51 Preboot menu options (1 of 5) (continued)**

Menu option	First level	Second level	Third level	Description	
Administrator				<p>This item navigates to the <b>Administrator</b> sub menus.</p> <p>If authentication is required (and the user is not already signed in) the <b>Sign In</b> displays. The user is required to sign in.</p>	
	Download			This item initiates a preboot firmware download process. A USB device interface or a Network connection can be used to download firmware.	
			Network		See the service manual for information about product updates.
			USB <X>		See the service manual for information about product updates.
	Clean Disk				<p>This item reinitializes the disk and cleans all disk partitions.</p> <p><b>CAUTION:</b> Selecting the <b>Clean Disk</b> item removes <b>all</b> data.</p> <p>A delete confirmation prompt is <b>not</b> provided.</p> <p>The system is <b>not</b> bootable after this action—a firmware download must be performed to return the system to a bootable state.</p>
Partial Clean					<p>This item reinitializes the disk (removing all data except the firmware repository where the master firmware bundle is downloaded and saved).</p> <p><b>CAUTION:</b> Selecting the <b>Partial Clean</b> item removes <b>all</b> data except the firmware repository.</p> <p>A delete confirmation prompt is <b>not</b> provided.</p> <p>This allows user to reformat the disk by removing the firmware image from the active directory without having to download new firmware code (product remains bootable).</p>
	Change Password				Select this item to set or change the administrator password.
	Clear Password				<p>Select the <b>Clear Password</b> item to remove a password from the Administrator menu. Before the password is actually cleared, a message will be shown asking to confirm that the password should be cleared. Press the <b>OK</b> button to confirm the action.</p> <p>When the confirmation prompt appears, press the <b>OK</b> button to clear the password.</p>

**Table 3-52 Preboot menu options (2 of 5)**

Menu option	First level	Second level	Third level	Description
Administrator continued	Manage Disk	Clear Disk		Select the <b>Clear Disk</b> item to enable an external device for job storage. Job storage is normally enabled only for the Boot device. This will be grayed out unless the <b>99.09.68</b> error is displayed.
		Lock Disk		Select the <b>Lock Disk</b> item to lock (mate) a new secure disk to this product.  The secure disk already locked to this product will remain accessible to this product. Use this function to have more than one encrypted disk accessible by the product when using them interchangeably.  The data stored on the secure disk locked to this product always remains accessible to this product.
		Leave Unlocked		Select the <b>Leave Unlocked</b> item to use a new secure disk in an unlocked mode for single service event. The secure disk that is already locked to this product will remain accessible to this product and uses the old disk's encryption password with the new disk.  The secure disk that is already locked to this product remains accessible to this product.
		Clear Password		Select the <b>Clear Password</b> item to continue using the non-secure disk and clear the password associated with the yet to be installed secure disk.  <b>CAUTION:</b> Data on the missing secure disk will be permanently inaccessible.
		Retain Password		Select the <b>Retain Password</b> item to use the non-secure disk for this session only, and then search for the missing secure disk in future sessions.
	Boot Device	Secure Erase		Select the <b>Secure Erase</b> item to erase all of the data on the disk and unlock it if required.  This might take a long time.  <b>NOTE:</b> The system will be unusable until the system files are reinstalled. ATA secure-erase command one pass over write. Erases entire disk including firmware. The disk remains an encrypted disk.
		Erase and Unlock		Select the <b>Erase and Unlock</b> item to cryptographically erase all data on disk and unlock the disk to allow access to it from any product.  <b>NOTE:</b> The system will be unusable until the system files are reinstalled. Erases the crypto key. The disk becomes a non-encrypted disk.
		Get Status		This item provides disk status information if any is available.

**Table 3-53 Preboot menu options (3 of 5)**

Menu option	First level	Second level	Third level	Description
Administrator continued	Manage Disk continued	Internal Device		Select the <b>Internal Device</b> item to erase the internal device or get status about the internal device.
			<b>Secure Erase</b>	Select the <b>Secure Erase</b> item to erase all of the data on the disk and unlock it if required.  This might take a long time.  <b>NOTE:</b> The system will be unusable until the system files are reinstalled. ATA secure-erase command one pass over write. Erases the entire disk, including firmware. The disk remains an encrypted disk.
			<b>Erase and Unlock</b>	Select the <b>Erase and Unlock</b> item to cryptographically erase all data on disk and unlock the disk to allow access to it from any product.  <b>NOTE:</b> The system will be unusable until the system files are reinstalled. Erases the crypto key. The disk becomes a non-encrypted disk.
			<b>Get Status</b>	This item provides disk status information if any is available.
		External Device		Select the <b>External Device</b> item to erase the internal device or get status about the internal device.
			<b>Secure Erase</b>	Select the <b>Secure Erase</b> item to erase all of the data on the disk and unlock it if required.  This might take a long time.  <b>NOTE:</b> The system will be unusable until the system files are reinstalled. ATA secure-erase command one pass over write. Erases the entire disk, including firmware. The disk remains an encrypted disk.
			<b>Erase and Unlock</b>	Select the <b>Erase and Unlock</b> item to cryptographically erase all data on disk and unlock the disk to allow access to it from any product.  <b>NOTE:</b> The system will be unusable until the system files are reinstalled. Erases the crypto key. The disk becomes a non-encrypted disk.
			<b>Get Status</b>	This item provides disk status information if any is available.



**Table 3-54 Preboot menu options (4 of 5)**

Menu option	First level	Second level	Third level	Description
Administrator continued	Configure LAN			Select the <b>Configure LAN</b> item to setup the network settings for the PreBoot menu firmware upgrade.  The network can be configured obtain the network settings from a DHCP server or as static.
		DHCP		Use this item for automatic IP address acquisition from the DHCP server.
		Static		Use this item to manually assign the network addresses.
			IP Address	Use this item to manually enter the IP addresses.
			Subnet Mask	Use this item to manually enter the subnet mask.
			Default Gateway	Use this item to manually enter the default gateway.
			Save and Exit	Select the <b>Save and Exit</b> item to save the manual settings.

**Table 3-55 Preboot menu options (5 of 5)**

Menu option	First level	Second level	Third level	Description
Administrator continued	<b>Startup Options</b>			Select the <b>Startup Options</b> item to specify options that can be set for the next time the product is turned on and initializes to the <b>Ready</b> state.
		<b>Cold Reset</b>		Check the <b>Cold Reset</b> item to clear the IP address and all customer settings (this item also returns all settings to factory defaults).  <b>NOTE:</b> Items in the <b>Service</b> menu are not reset.
		<b>First Power</b>		Not currently functional: This item allows the product initialize as if it is the first time it has been turned on.  For example, the user is prompted to configure first time settings like Select Date/Time, Select Language, and other settings.  Check this item so that it is enabled for the next time the product power is turned on.  When the product power is turned on the next time, this item is unchecked so that the pre-configured settings are used during configuration and the first time setting prompt is not used.
		<b>Skip Plug-ins</b>		This item allows the device to be started without loading the third party applications.  This means that files including Accessible Architecture on the disk will not be available at bootup. This is useful for troubleshooting problems with the hard disk without having to remove the hard disk. It also applies to flash file system disks on DIMMs.  In this case, this function will cause the printer to configure the HP firmware first, followed by the third-party applications.  <b>NOTE:</b> The files on the disk will be available after the printer enters the <b>Ready</b> state.
		<b>Skip Cal</b>		Select the <b>Skip Cal</b> item to initialize the product the next time the power is turned on without calibrating.
		<b>Show Revision</b>		Not currently functional: Check the <b>Show Revision</b> item to allow the product to initialize and show the firmware version when the device reaches the <b>Ready</b> state.  Once the product power is turned on the next time, the <b>Show Revision</b> item is unchecked so the firmware revision is not shown.
		<b>Lock Service</b>		<b>CAUTION:</b> Select the <b>Lock Service</b> item to lock the Service menu access (both PreBoot and Device Maintenance application).  Service personnel must have the Administrator remove the <b>Lock Service</b> setting before they can enter the <b>Service</b> menu.

**Table 3-56 Preboot menu options (5 of 5)**

Menu option	First level	Second level	Third level	Description
<b>Administrator</b> continued	<b>Startup Options</b> continued	<b>Skip Disk Scan</b>		<p>Check the <b>Skip Disk Scan</b> item to allow the product to initialize without scanning the disk.</p> <p>If the product is crashing on Step 4/8, checking this item may allow the problem to be isolated.</p> <p>Once the device is turned on the next time, the <b>Skip Disk Scan</b> item is unchecked and the disk scan is not skipped.</p>
		<b>Embedded Jetdirect Off</b>		<p>Check the <b>Embedded Jetdirect Off</b> item to disable the embedded Jetdirect.</p> <p>By default this item is unchecked so that Jetdirect is always enabled.</p>
<b>Service Tools</b>				This item requires the Service access code.
		<b>Reset Password</b>		Use this item to clear the Administrator password.
		<b>Subsystems</b>		For manufacturing use only. Do not change these values.

# Product updates

To download the most recent firmware upgrade for the product, go to [www.hp.com/support/cljcp5525](http://www.hp.com/support/cljcp5525) or [www.hp.com/go/cljcp5525\\_firmware](http://www.hp.com/go/cljcp5525_firmware).

## Determine the installed revision of firmware

Print a configuration page to determine the installed revision of firmware.

On the configuration page, look in the section marked Device Information for the firmware datecode and firmware revision.

### Firmware datecode and firmware revision examples

- 20100831 (firmware datecode)
- 103067\_104746 (firmware revision)


## Perform a firmware upgrade

The firmware bundle is a xxxxxxxx.bdl file. This file requires an interactive upgrade method. You cannot upgrade the product using the traditional FTP, LPR or Port 9100 methods of upgrading. Use one of the following methods to upgrade the firmware for this product.

### Embedded Web Server

1. Open an browser window.
2. Enter the product IP address in the URL line.
3. Select the **Firmware upgrade** link from within the **Troubleshooting** tab.


---

 **NOTE:** If you get a warning screen, follow the instructions for setting an administrator password from the **Security** tab.

---

4. Browse to the location that the firmware upgrade file was downloaded to, and then select the firmware file. Select the Install button to perform the upgrade.




---

 **NOTE:** Do not close the browser window until the Embedded Web Server (EWS) displays the confirmation page.


---

5. Select **Restart Now** from the EWS confirmation page, or turn the product off, and then on again using the power switch.


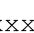
## USB storage device (Preboot menu)

1. Copy the `xxxxxxx.bdl` file to a portable USB flash memory storage device (thumb drive).
2. Turn the product on.
3. Press the Stop  button when the **Ready**, **Data** and **Attention** LEDs illuminate solid.
4. Press the Down arrow  button to highlight **Administrator**, and then press the **OK** button.
5. Press the Down arrow  button to highlight **Download**, and then press the **OK** button.
6. Insert the portable USB storage device with the `xxxxxxx.bdl` file on it.


---

 **NOTE:** If the error message **No USB Thumbdrive Files Found** appears on the control-panel display, you might need to connect the storage device to the external USB connection on the formatter or try using a different portable storage device.


---

7. Press the Down arrow  button to highlight **USB Thumb Drive**, and then press the **OK** button.
8. Press the Down arrow  button to highlight the `xxxxxxx.bdl` file, and then press the **OK** button.


---

 **NOTE:** The upgrade process can take up to 10 minutes to complete.

---

 **TIP:** If there is more than one `xxxxxxx.bdl` file on the storage device, make sure that you select the correct file for this product.

---

9. When the message **Complete** appears on the control-panel display, press the back arrow  button 3 times.
10. When the message **Continue** appears on the control-panel display, press the **OK** button. The product will initialize.
11. When the upgrade process is complete, print a configuration page and verify that the upgrade firmware version was installed.

## USB storage device (control-panel menu)

1. Copy the `xxxxxxx.bdl` file to a portable USB flash memory storage device (thumbdrive).
2. Turn the product on, and then wait until it reaches the Ready state.
3. Press the Home  button or OK button.
4. Press the Down arrow ▼ button to highlight **Device Maintenance**, and then press the OK button.
5. Press the Down arrow ▼ button to highlight **USB Firmware Upgrade**, and then press the OK button.
6. Insert the portable USB storage device with the `xxxxxxx.bdl` file on it into the USB port on the front of the product, and then press the OK button.
7. Press the Down arrow ▼ button to highlight the `xxxxxxx.bdl` file, and then press the OK button.



---

**TIP:** If there is more than one `xxxxxxx.bdl` file on the storage device, make sure that you select the correct file for this product.

---

8. A prompt to upgrade an older, newer, or reinstall the same version appears. Press the Down arrow ▼ button to highlight the desired option, and then press the OK button.

When the upgrade is complete, the product will initialize.



---

**NOTE:** The upgrade process can take up to 10 minutes to complete.

---

9. When the upgrade process is complete, print a configuration page and verify that the upgrade firmware version was installed.



---

## 4 Parts and diagrams

- [Order parts, accessories, and supplies](#)
- [Part numbers](#)
- [Screws](#)
- [How to use the parts lists and diagrams](#)
- [Covers](#)
- [Right-door assembly](#)
- [Internal assemblies](#)
- [Assessories](#)
- [Alphabetical parts list](#)
- [Numerical parts list](#)



# Order parts, accessories, and supplies

You can obtain the following items directly from HP:

- **Replacement parts:** To order replacement parts in the U.S., go to [www.hp.com/go/hpparts/](http://www.hp.com/go/hpparts/). Outside the United States, order parts by contacting your local authorized HP service center.
- **Supplies and accessories:** To order supplies in the U.S., go to [www.hp.com/go/ljsupplies](http://www.hp.com/go/ljsupplies). To order supplies worldwide, go to [www.hp.com/ghp/buyonline.html](http://www.hp.com/ghp/buyonline.html). To order accessories, go to [www.hp.com/support/lj500colorM551](http://www.hp.com/support/lj500colorM551).

# Part numbers

The following list of accessories was current at the time of printing. Ordering information and availability of the accessories might change during the life of the product.

## Accessories

Product name	Product number	Part number
1 x 500-sheet paper feeder	CF084A	CF084-67901

## Print cartridges and toner collection unit

Product name	Cartridge number	Part number (service)
HP Color LaserJet standard black print cartridge	507A	CE400-67901
HP Color LaserJet high capacity black print cartridge	507X	CE400-67902
HP Color LaserJet cyan print cartridge	507A	CE401A-67901
HP Color LaserJet yellow print cartridge	507A	CE402-67901
HP Color LaserJet magenta print cartridge	507A	CE403-67901
Toner collection unit (TCU)	CE254A	RM1-4989-000CN

## Memory


Product name	Part number
Memory replacement kit (n and dn models only)	CF081-67902
<ul style="list-style-type: none"><li>4GB SSM</li><li>Retainer</li><li>Installation instructions</li></ul>	
Hard drive replacement kit (n and xh model)	CF083-67901
<ul style="list-style-type: none"><li>250GB HDD</li><li>Bracket</li><li>Installation instructions</li></ul>	

## Customer self repair (CSR) and service kits

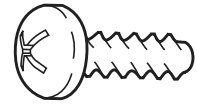
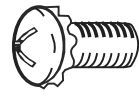
Product name	Part number
Front-door assembly and name plate	CF081-67901
<ul style="list-style-type: none"> <li>• Front-door assembly</li> <li>• HP Jewel</li> <li>• Name plate</li> <li>• Installation instructions</li> </ul>	
1 x 500-sheet paper feeder right door kit	CC468-67906
<ul style="list-style-type: none"> <li>• Right-door assembly</li> <li>• Right-door stopper</li> <li>• Right-door link</li> <li>• Installation instructions</li> </ul>	
Toner collection unit (TCU) kit	CC468-67910
<ul style="list-style-type: none"> <li>• Toner collection unit</li> <li>• Installation instructions</li> </ul>	
Pick/feed and separation roller kit (Tray 1/2)	CF081-67903
<ul style="list-style-type: none"> <li>• Separation roller assembly (tray/cassette)</li> <li>• Pickup roller assembly (tray/cassette)</li> <li>• Pickup roller (MP tray)</li> <li>• Installation instructions</li> </ul>	
Pick/feed and separation roller kit (Tray 3)	CF081-67913
<ul style="list-style-type: none"> <li>• Paper feed assembly (tray/cassette)</li> <li>• Pickup roller assembly (tray/cassette)</li> <li>• Pickup roller (MP tray)</li> <li>• Installation instructions</li> </ul>	
ITB kit	CF081-67904
<ul style="list-style-type: none"> <li>• Intermediate transfer belt (ITB)</li> <li>• Secondary transfer roller assembly</li> <li>• Installation instructions</li> </ul>	

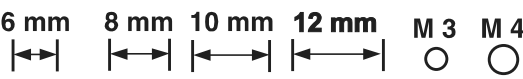
Product name	Part number
Service fuser kit	CF081-67905 (110 V)
<ul style="list-style-type: none"> <li>Fuser assembly (110 V or 220 V)</li> <li>Installation instructions</li> </ul>	CF081-67906 (220 V)
<b>CAUTION:</b> Make sure that you order the correct kit for the rated voltage of your product.	
Duplex reverse guide kit	CC468-67913
<ul style="list-style-type: none"> <li>Duplex reverse guide</li> <li>Installation instructions</li> </ul>	
Secondary transfer (T2) roller kit	CF081-67907
<ul style="list-style-type: none"> <li>Secondary transfer roller</li> <li>Installation instructions</li> </ul>	
Secondary transfer assembly kit	CF081-67908 (simplex)
<ul style="list-style-type: none"> <li>Secondary transfer assembly (simplex or duplex)</li> <li>Installation instructions</li> </ul>	CF081-67909 (duplex)
<b>NOTE:</b> Make sure that you order the correct kit for your product model (simplex or duplex).	
Laser scanner assembly kit	CC468-67917
<ul style="list-style-type: none"> <li>Laser/scanner assembly</li> <li>Installation instructions</li> </ul>	
Main drive assembly kit	CF081-67910
<ul style="list-style-type: none"> <li>Main drive assembly</li> <li>Installation instructions</li> </ul>	
Formatter assembly kit (exchange)	CF081-69001
<ul style="list-style-type: none"> <li>Formatter PCA</li> <li>Formatter tray</li> <li>Screw (2)</li> <li>Installation instructions</li> </ul>	
Formatter assembly kit (China only)	CF081-67912
<ul style="list-style-type: none"> <li>Formatter PCA</li> <li>Formatter tray</li> <li>Screw (2)</li> <li>Installation instructions</li> </ul>	
HDD Replacement Kit (U.S. government only)	CF083-67902

# Screws

 **NOTE:** The screw illustrations in the following table are for reference only. Screws might vary in size and appearance from those shown in this table.


**Table 4-1 Common fasteners**


Example	Description	Size	Part Number
	Screw, tapping, truss head	M4X10	XB4-7401-005CN
	Screw, D	M3X8	XA9-1671-000CN



## How to use the parts lists and diagrams

The figures in this chapter show the major subassemblies in the product and their component parts. A parts list table follows each exploded view assembly diagram. Each table lists the item number, the associated part number, and the description of each part. If a part is not listed in the table, then it is not a field replacement unit (FRU).

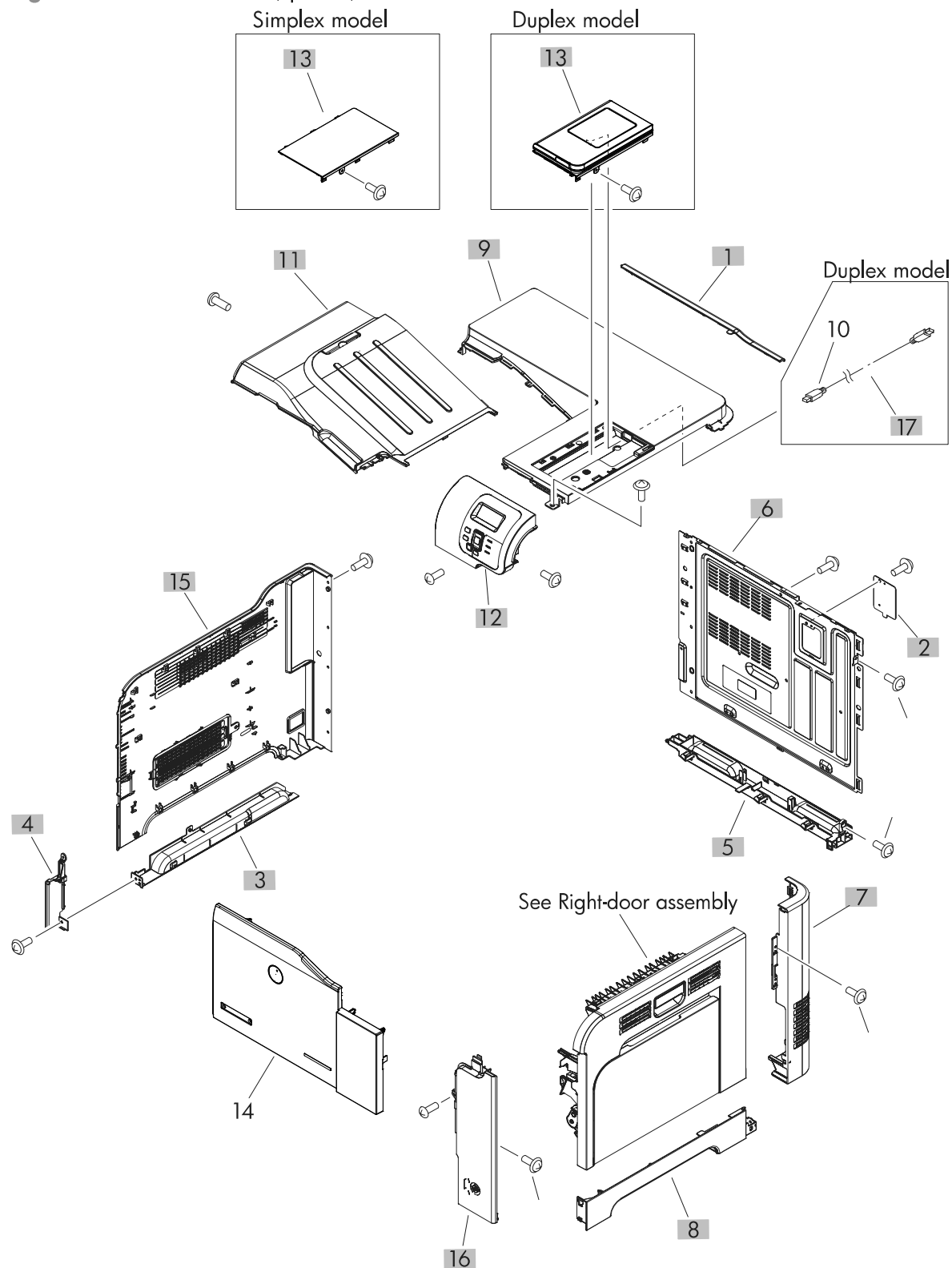
 **CAUTION:** Be sure to order the correct part. When looking for part numbers for electrical components, pay careful attention to the voltage that is listed in the description column. Doing so will ensure that the part number selected is for the correct all-in-one model.

 **NOTE:** In this manual, the abbreviation “PCA” stands for “printed circuit-board assembly.” Components described as a PCA might consist of a single circuit board or a circuit board plus other parts, such as cables and sensors.



# Covers

**Figure 4-1** External covers, panels, and doors



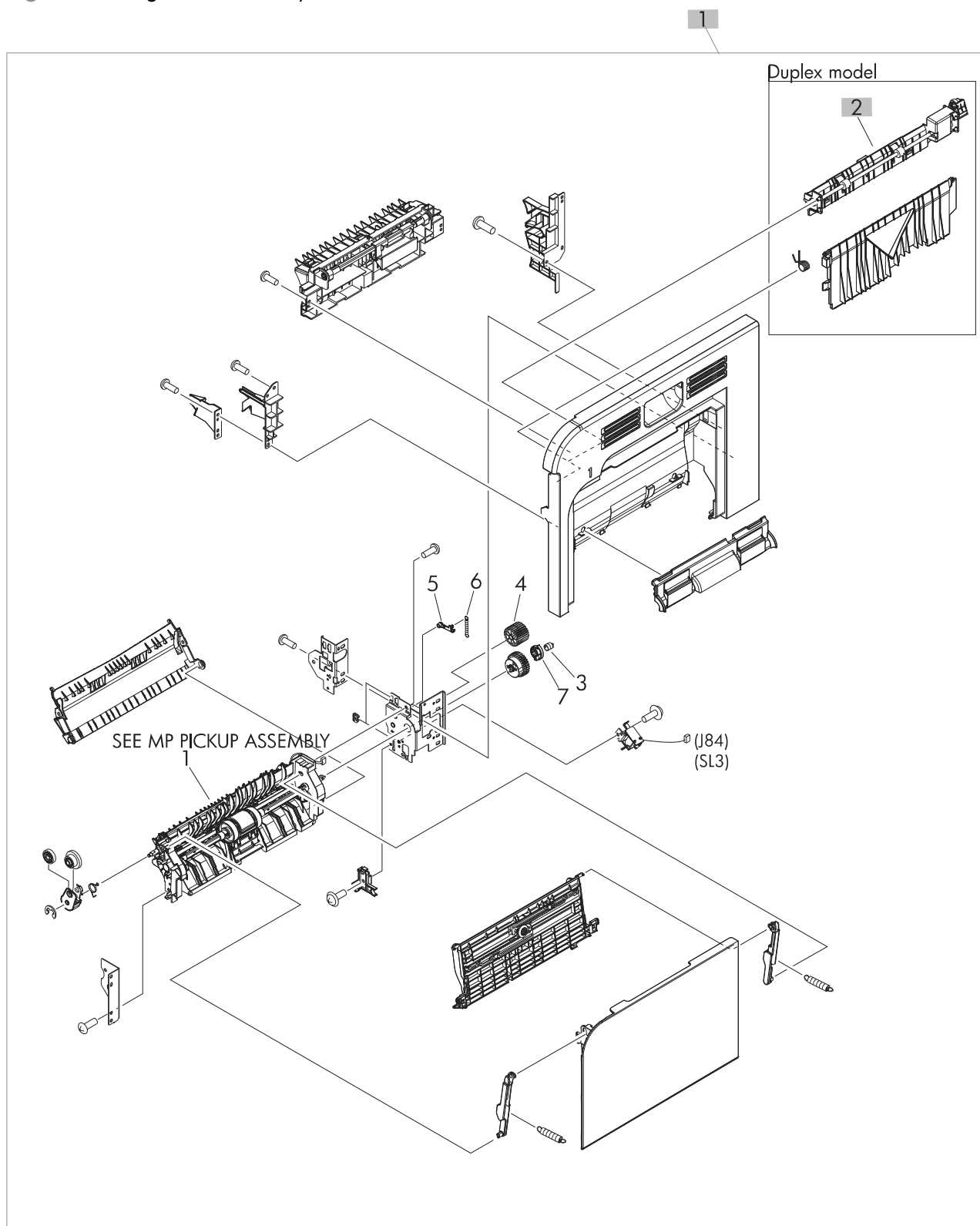
**Table 4-2 External covers, panels, and doors**

<b>Ref</b>	<b>Description</b>	<b>Part number</b>	<b>Qty</b>
1	Cover, rear upper	RC2-5058-000CN	1
2	Plate, blanking	RC2-5938-000CN	1
3	Cover, left lower	RC3-1112-000CN	1
4	Cover, left front	RC3-1113-000CN	1
5	Cover, rear lower	RC3-1114-000CN	1
6	Cover, rear	RC3-1115-000CN	1
7	Cover, right rear	RC3-1116-000CN	1
8	Cover, right lower	RC3-1117-000CN	1
9	Cover, upper	RC3-1118-000CN	1
11	Tray, paper delivery	RL1-1941-030CN	1
12	Operation (control) panel assembly	RM1-8096-000CN	1
13	Cover, USB (simplex)	RC3-1093-000CN	1
13	Cover, USB (duplex)	RM1-8173-000CN	1
15	Cover, left assembly	RM1-8159-000CN	1
16	Cover, right-front assembly	RM1-8165-000CN	1



# Right-door assembly

Figure 4-2 Right-door assembly



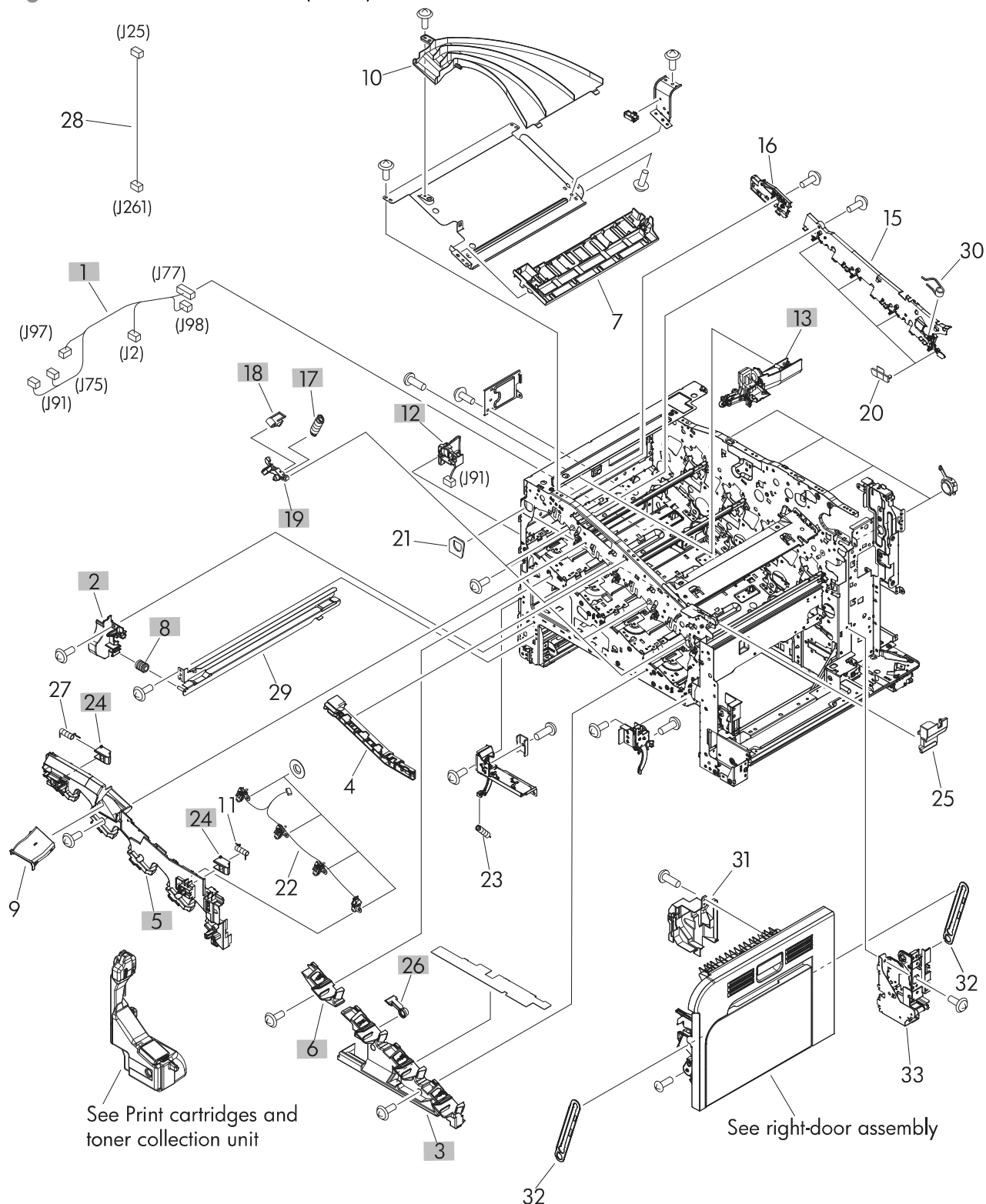
**Table 4-3 Right-door assembly**

<b>Ref</b>	<b>Description</b>	<b>Part number</b>	<b>Qty</b>
1	Right-door assembly (simplex)	RM1-8167-000CN	1
1	Right-door assembly (duplex)	RM1-8123-000CN	1
2	Duplexing paper feed assembly	RM1-4959-000CN	2

# Internal assemblies

## Internal assemblies (1 of 5)

Figure 4-3 Internal assemblies (1 of 5)

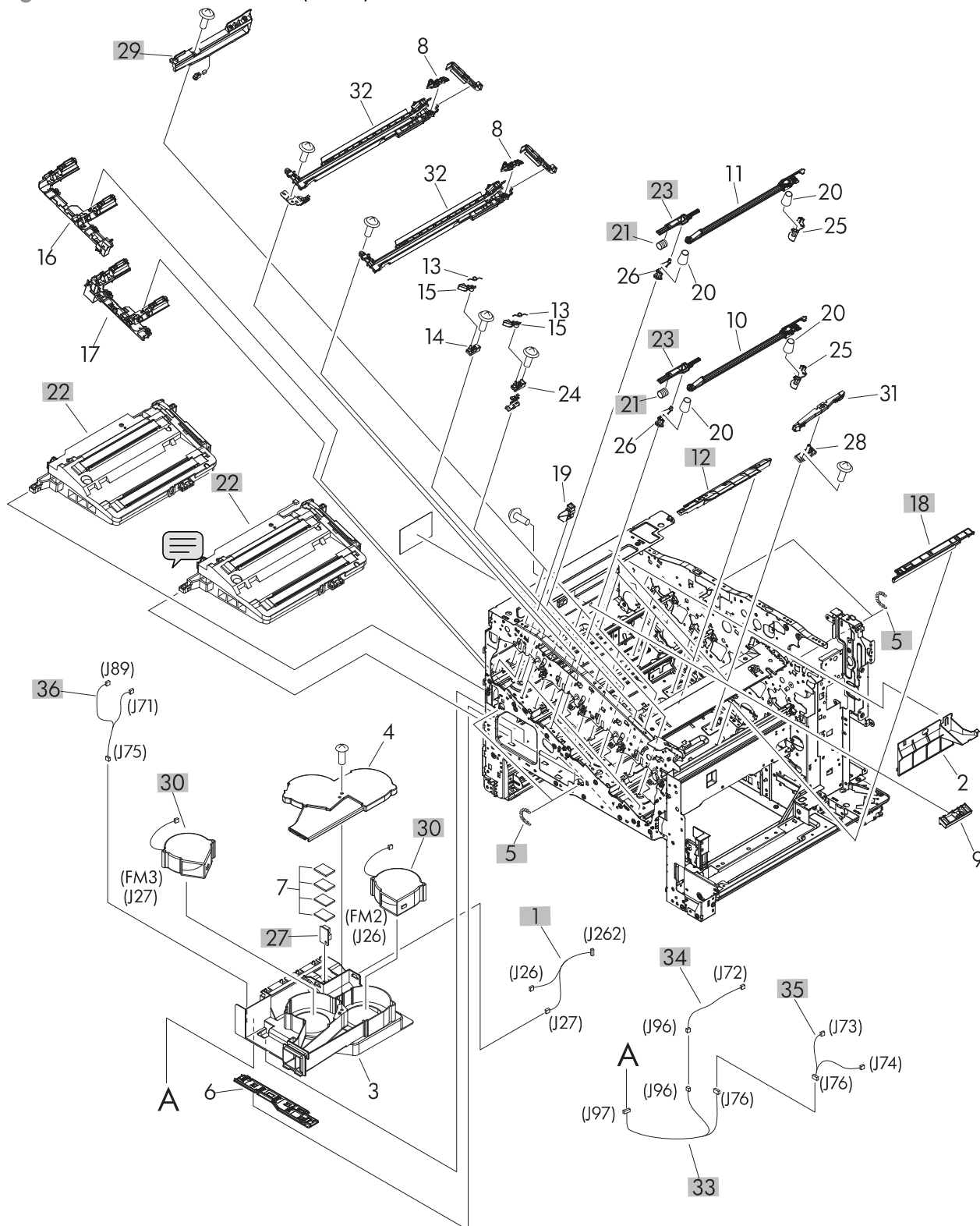



**Table 4-4 Internal assemblies (1 of 5)**

<b>Ref</b>	<b>Description</b>	<b>Part number</b>	<b>Qty</b>
1	Left cable assembly	RM1-5742-000CN	1
2	Holder, CST positioning	RC3-1231-000CN	1
3	Cover, front inner lower unit (CMK)	RL1-1914-020CN	1
5	Cover, front inner, upper	RC3-1070-000CN	1
6	Cover, front inner lower (Y)	RL1-1915-000CN	1
8	Roller, rail	RC2-4831-000CN	1
12	Waste toner detect assembly	RM1-5696-000CN	1
13	Waste toner duct assembly	RM1-8138-000CN	1
17	Spring, tension	RU7-2192-000CN	4
18	Spring, ground	RU6-2237-000CN	4
19	Lever, cartridge pressure front	RC2-3983-030CN	4
24	Lock, door	RC2-5937-000CN	2
26	Lever, box presence detect	RC2-5951-000CN	1

## Internal assemblies (2 of 5)

**Figure 4-4** Internal assemblies (2 of 5)

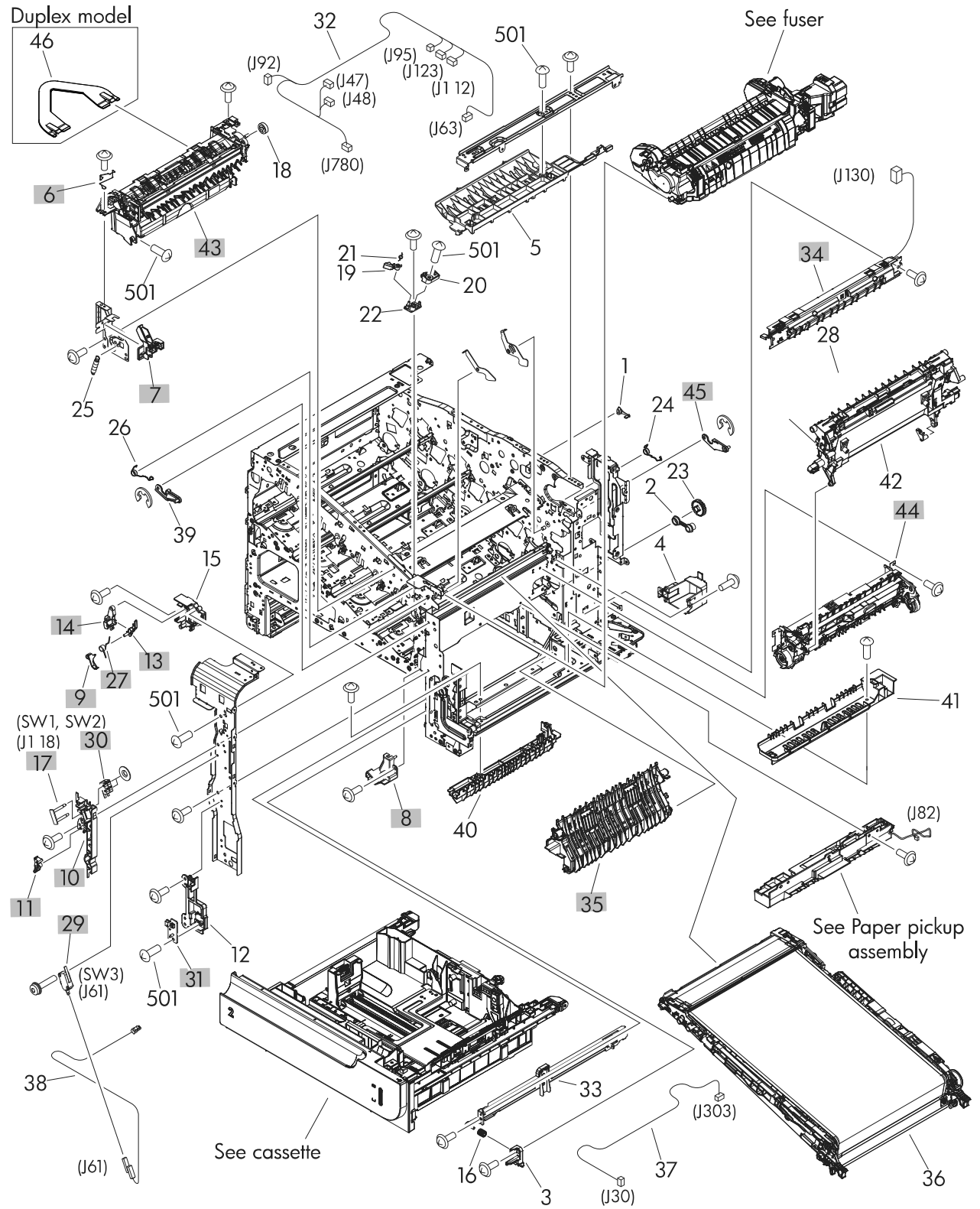


**Table 4-5 Internal assemblies (2 of 5)**

Ref	Description	Part number	Qty
1	Fan cable assembly	RM1-5746-000CN	1
5	Spring, tension	RU6-2436-000CN	2
12	Cover	RC2-5912-000CN	3
18	Cover	RC2-5962-000CN	1
21	Spring, compression	RU6-2316-000CN	2
23	Lever, shutter	RC2-4415-000CN	2
27	Temperature sensor assembly	RK2-3267-000CN	1
29	Toner sensor holder assembly	RM1-5700-000CN	4
30	Fan (FM2, FM3)	RK2-2418-000CN	2
33	Connecting cable assembly	RM1-5749-000CN	1
34	Sensor cable assembly	RM1-5740-000CN	1
35	Sensor cable assembly	RM1-5741-000CN	1
36	Motor/sensor cable assembly	RM1-5752-000CN	1

## Internal assemblies (3 of 5)

**Figure 4-5** Internal assemblies (3 of 5)



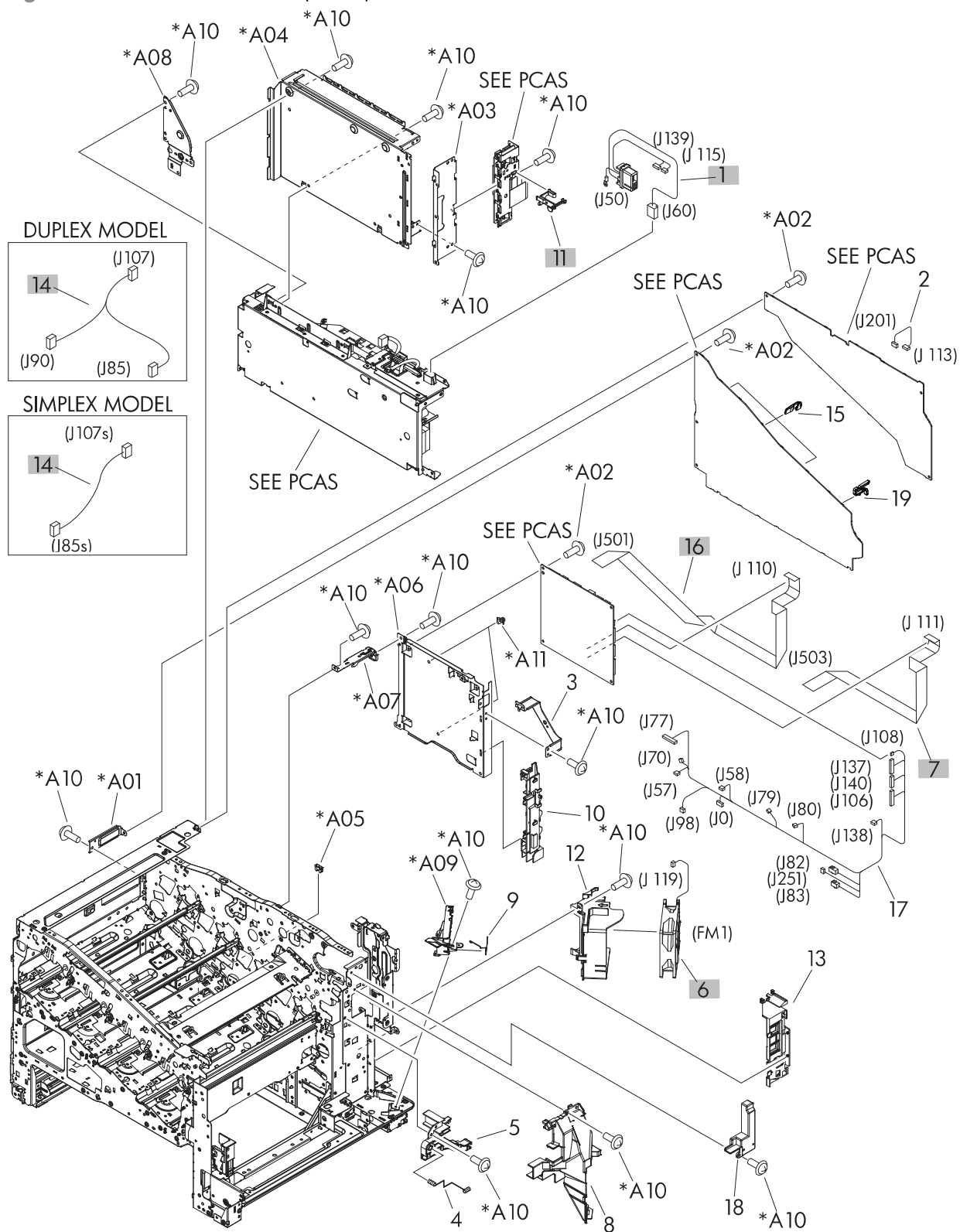
**Table 4-6 Internal assemblies (3 of 5)**

<b>Ref</b>	<b>Description</b>	<b>Part number</b>	<b>Qty</b>
6	Wire, (mech) sensor protect	RC2-4828-000CN	1
7	Sensor cable guide assembly	RM1-8178-000CN	1
8	Cover, right lower inner	RC2-5019-000CN	1
9	Link, interlock	RC2-5120-000CN	1
10	Mount, interlock switch	RC2-5123-000CN	1
11	Arm, interlock link switch	RC2-5121-000CN	1
13	Link, interlock	RC2-5119-000CN	1
14	Link, interlock	RC2-5118-000CN	1
17	Shaft	RC2-5913-000CN	1
27	Link, interlock	RC2-5122-000CN	1
29	Microswitch	WC4-5171-000CN	1
30	Door switch assembly	RM1-5732-000CN	1
31	Switch, PCA assembly	RM1-8097-000CN	1
34	Density detect assembly	RM1-8163-000CN	1
35	Pick up lower guide assembly	RM1-8132-000CN	1
43	Paper delivery assembly (simplex)	RM1-5003-050CN	1
43	Paper delivery assembly (duplex)	RM1-4970-060CN	1
44	Registration assembly (simplex)	RM1-5009-000CN	1
44	Registration assembly (duplex)	RM1-4969-000CN	1
45	Rear lock arm assembly	RM1-5533-000CN	1



## Internal assemblies (4 of 5)

**Figure 4-6** Internal assemblies (4 of 5)

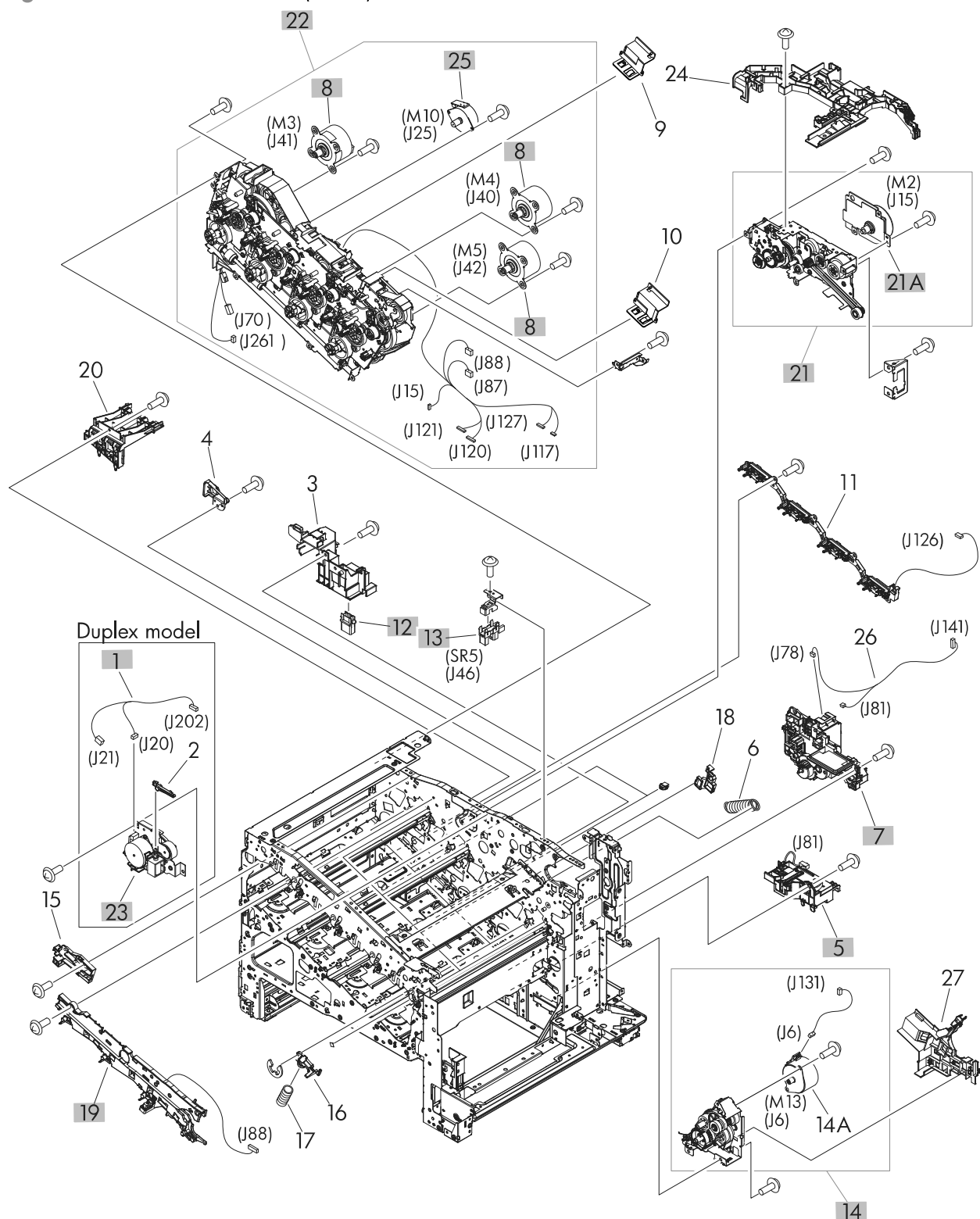


**Table 4-7 Internal assemblies (4 of 5)**

<b>Ref</b>	<b>Description</b>	<b>Part number</b>	<b>Qty</b>
1	Fusing connecting cable assembly	RM1-5714-000CN	1
6	Fan (FM1)	RK2-2416-000CN	1
7	Cable, flat 2 laser	RK2-3943-000CN	1
11	Switch arm	RC2-5943-000CN	1
14	MP sensor cable assembly (simplex)	RM1-5750-000CN	1
14	MP sensor cable assembly (duplex)	RM1-5737-000CN	1
16	Cable, flat 1 scanner	RK2-3941-000CN	1

## Internal assemblies (5 of 5)

Figure 4-7 Internal assemblies (5 of 5)

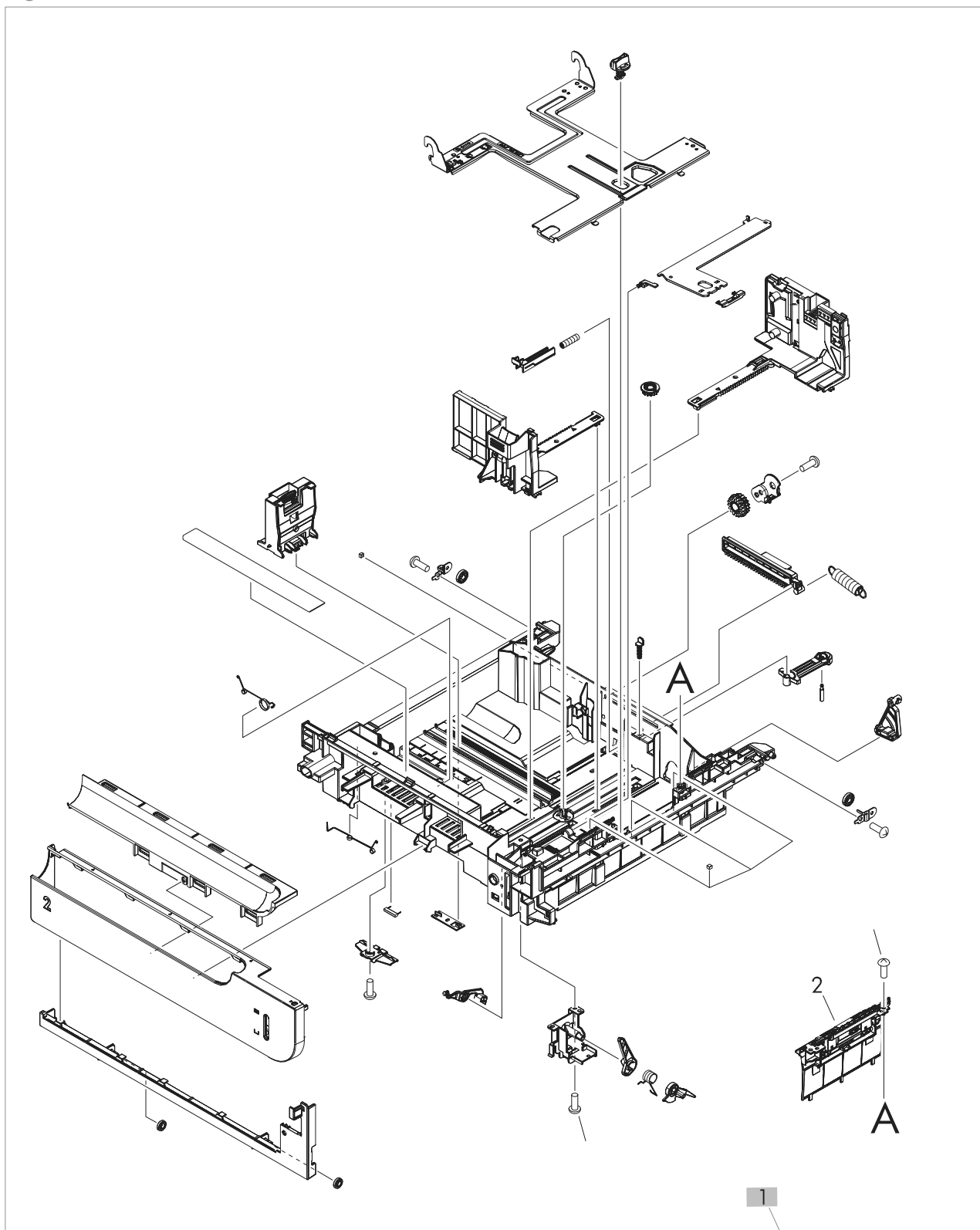


**Table 4-8 Internal assemblies (5 of 5)**

<b>Ref</b>	<b>Description</b>	<b>Part number</b>	<b>Qty</b>
1	Duplexing unit cable assembly	RM1-5730-000CN	1
5	Auto close assembly	RM1-8137-000CN	1
7	Lifter drive assembly	RM1-8136-000CN	1
8	Main motor unit (M3, M4, M5)	RM1-8105-000CN	3
12	Connector, drawer	VS1-7258-007CN	1
13	Photo interrupter, TLP1243	WG8-5935-000CN	1
14	Cassette paper pick up drive assembly (M13)	RM1-8135-000CN	1
14A	Pickup motor assembly (M13)	RM1-5773-000CN	1
19	Rear Pre-exposure PCA assembly	RM1-5705-000CN	1
21	Fusing (fixing) drive assembly (simplex)	RM1-8169-000CN	1
21	Fusing (fixing) drive assembly (duplex)	RM1-8134-000CN	1
22A	Fusing (fixing) motor assembly (M2)	RM1-4983-000CN	1
23	Duplexing drive assembly	RM1-4973-000CN	1
25	Stepping motor, DC (developing disengagement; M10)	RK2-2415-000CN	1

## Cassette

**Figure 4-8** Cassette

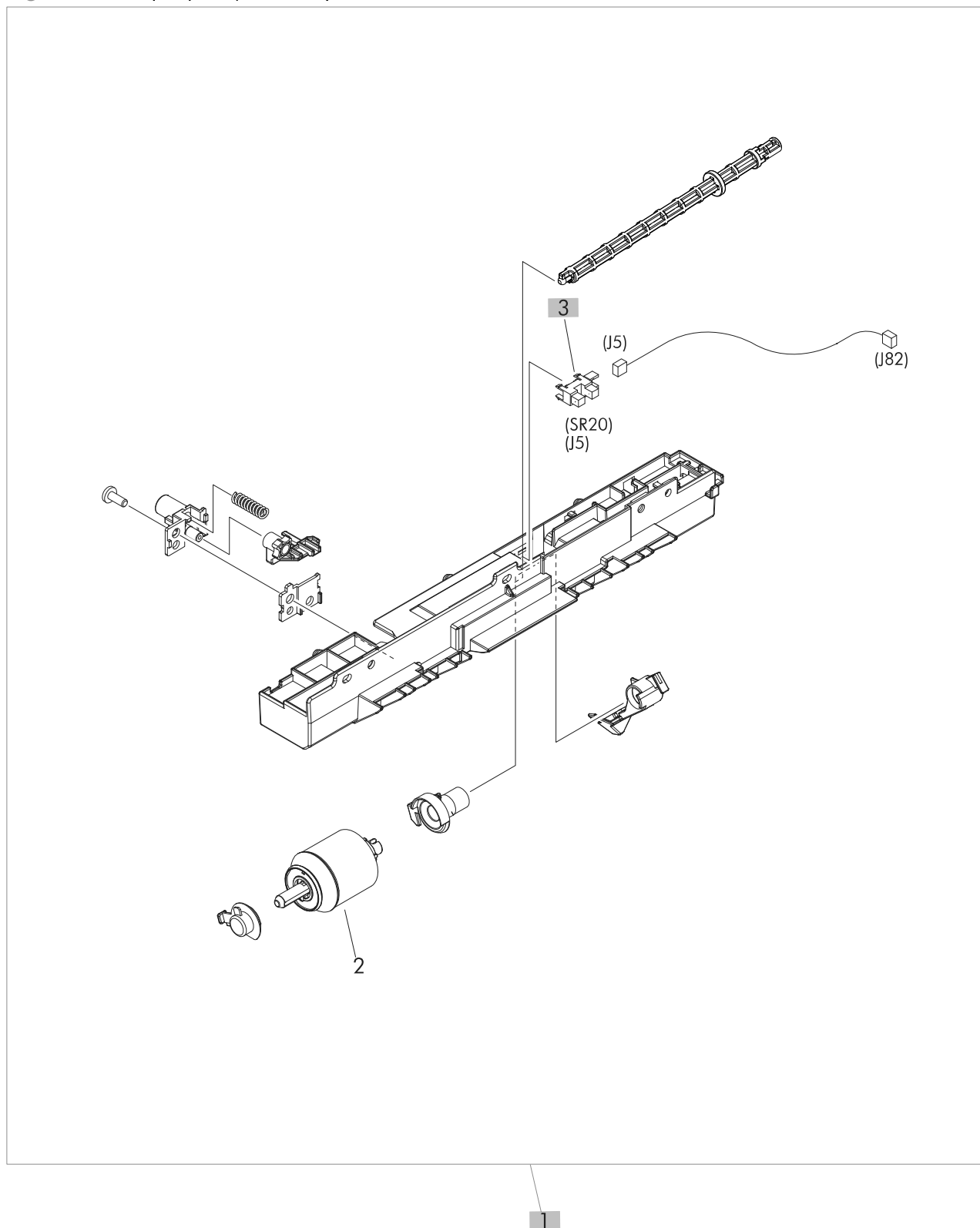


**Table 4-9 Cassette**

<b>Ref</b>	<b>Description</b>	<b>Part number</b>	<b>Qty</b>
1	Cassette	RM1-8125-000CN	1

## Paper pickup assembly

Figure 4-9 Paper pickup assembly



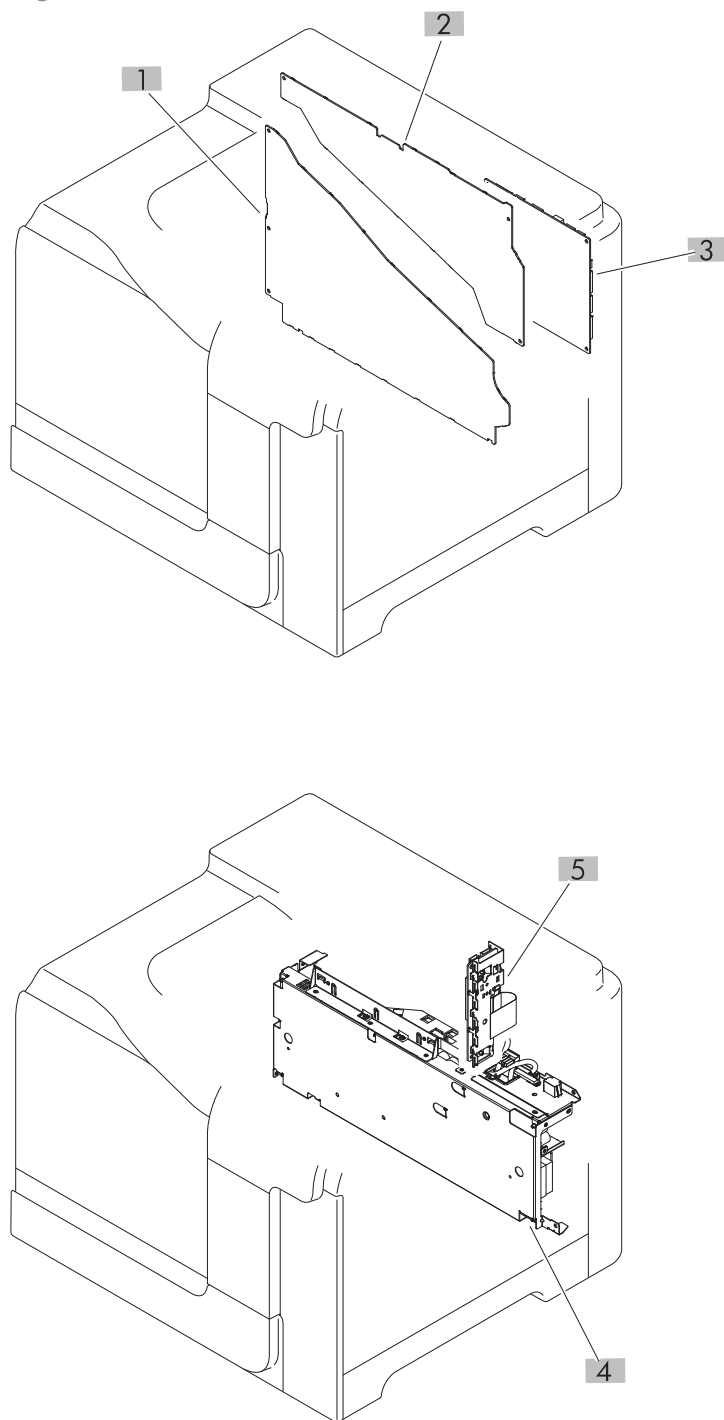
**Table 4-10 Paper pickup assembly**

<b>Ref</b>	<b>Description</b>	<b>Part number</b>	<b>Qty</b>
1	Paper pickup assembly (simplex)	RM1-8168-000CN	1
1	Paper pickup assembly (duplex)	RM1-8124-000CN	1
3	Photointerrupter	WG8-5935-000CN	1




## PCAs

Figure 4-10 PCAs



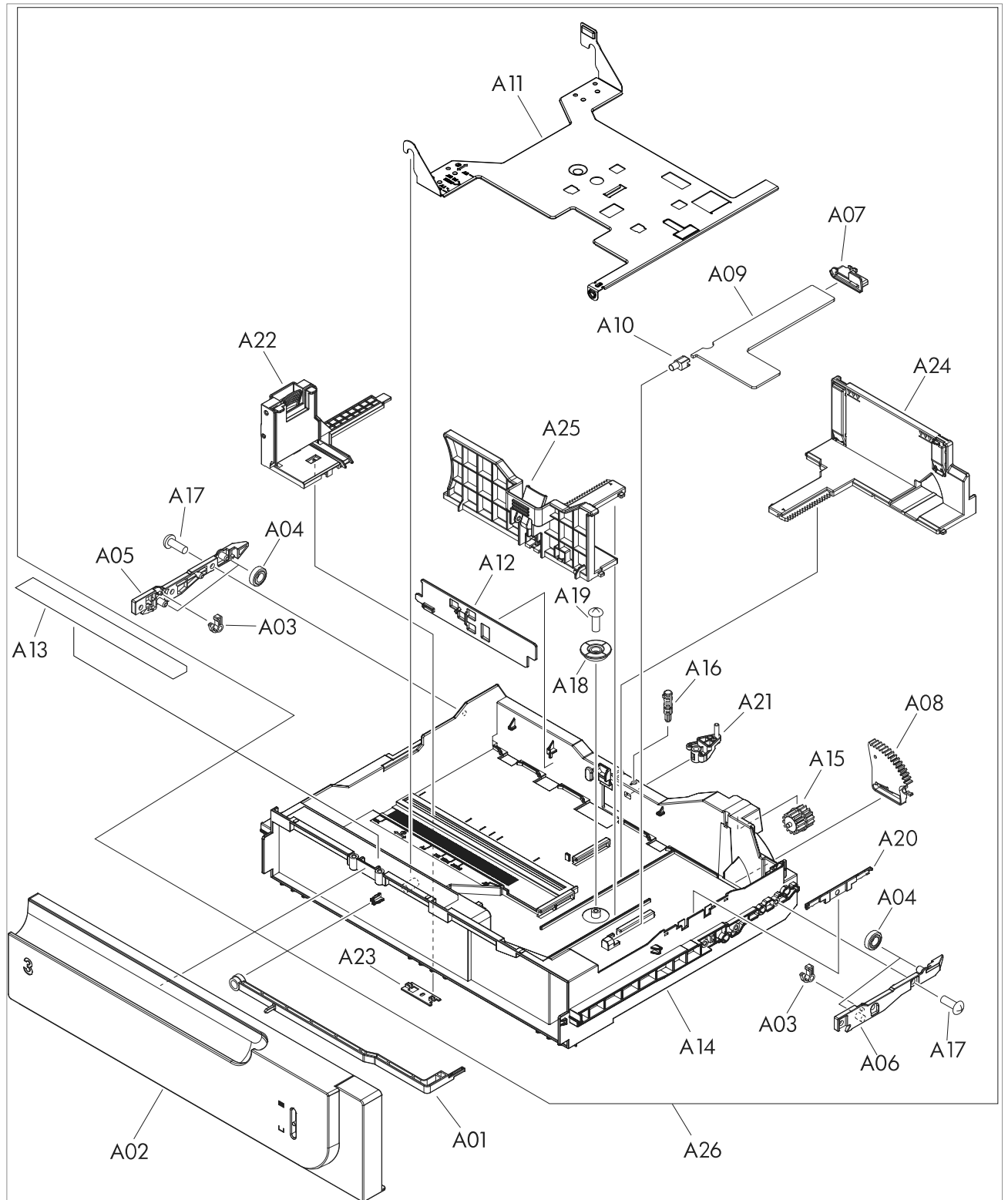
**Table 4-11 PCAs**

Ref	Description	Part number	Qty
1	Lower HVPS-D PCA	RM1-8087-000CN	1
2	 Upper HVPS-T PCA (simplex)	RM1-8089-000CN	1
2	Upper HVPS-T PCA (duplex)	RM1-8088-000CN	1
3	DC controller PCA	RM1-8104-000CN	1
4	Low-voltage power supply 110V	RM1-8091-000CN	1
4	Low-voltage power supply 220V	RM1-8093-000CN	1
5	Inner connecting PCA (ICB)	RM1-8143-000CN	1
Not shown	Formatter assembly kit (exchange)	CF081-69001	1
Not shown	Formatter assembly kit (China)	CF081-67912	1

# Assessories

## 1 x 500-sheet paper feeder

Figure 4-11 1 x 500-sheet paper feeder

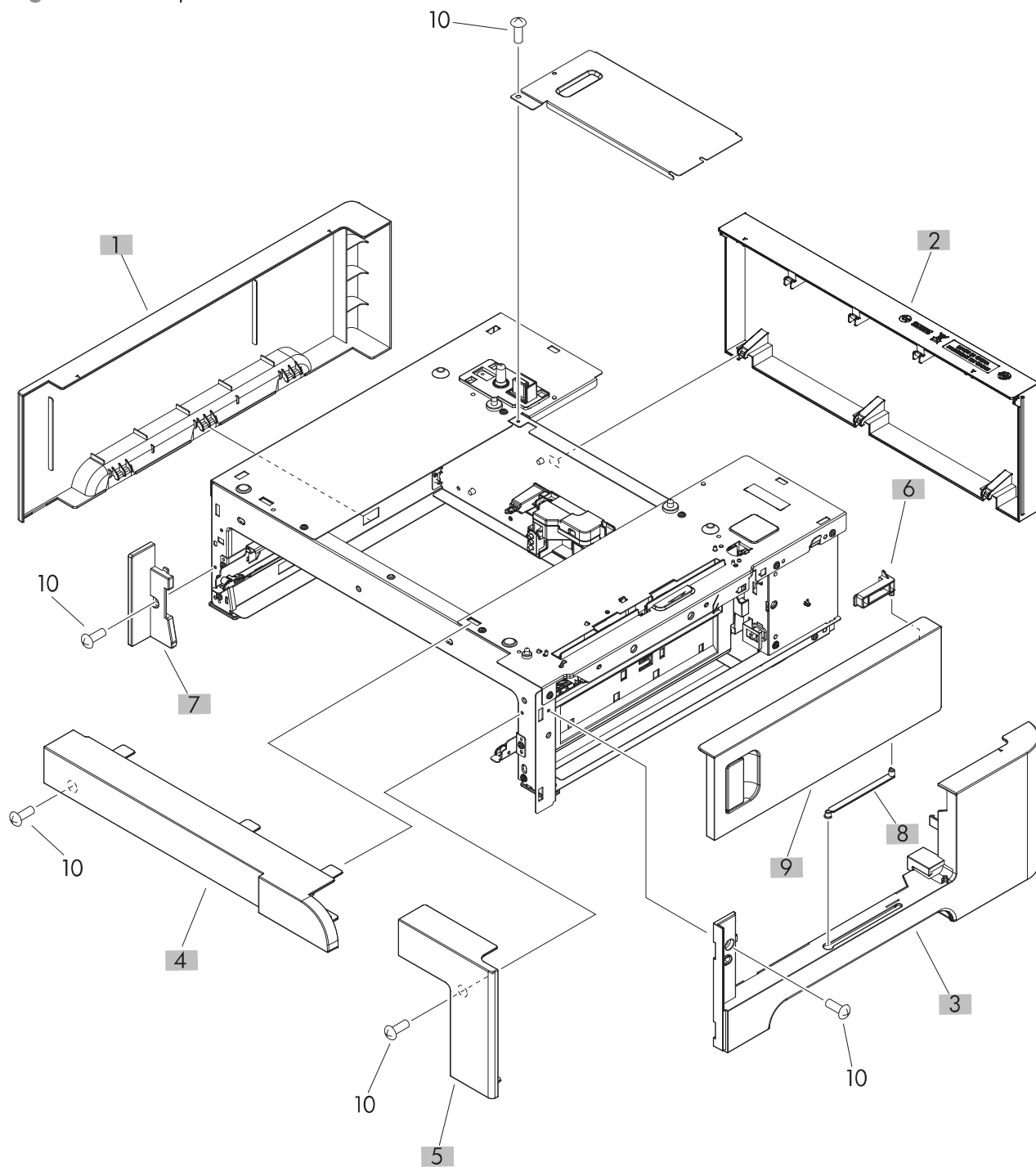


**Table 4-12 1 x 500-sheet paper feeder**

Ref	Description	Part number	Qty
1	1 x 500-sheet feeder replacement kit	CF084-67901	1

## Paper feeder covers

Figure 4-12 Paper feeder covers

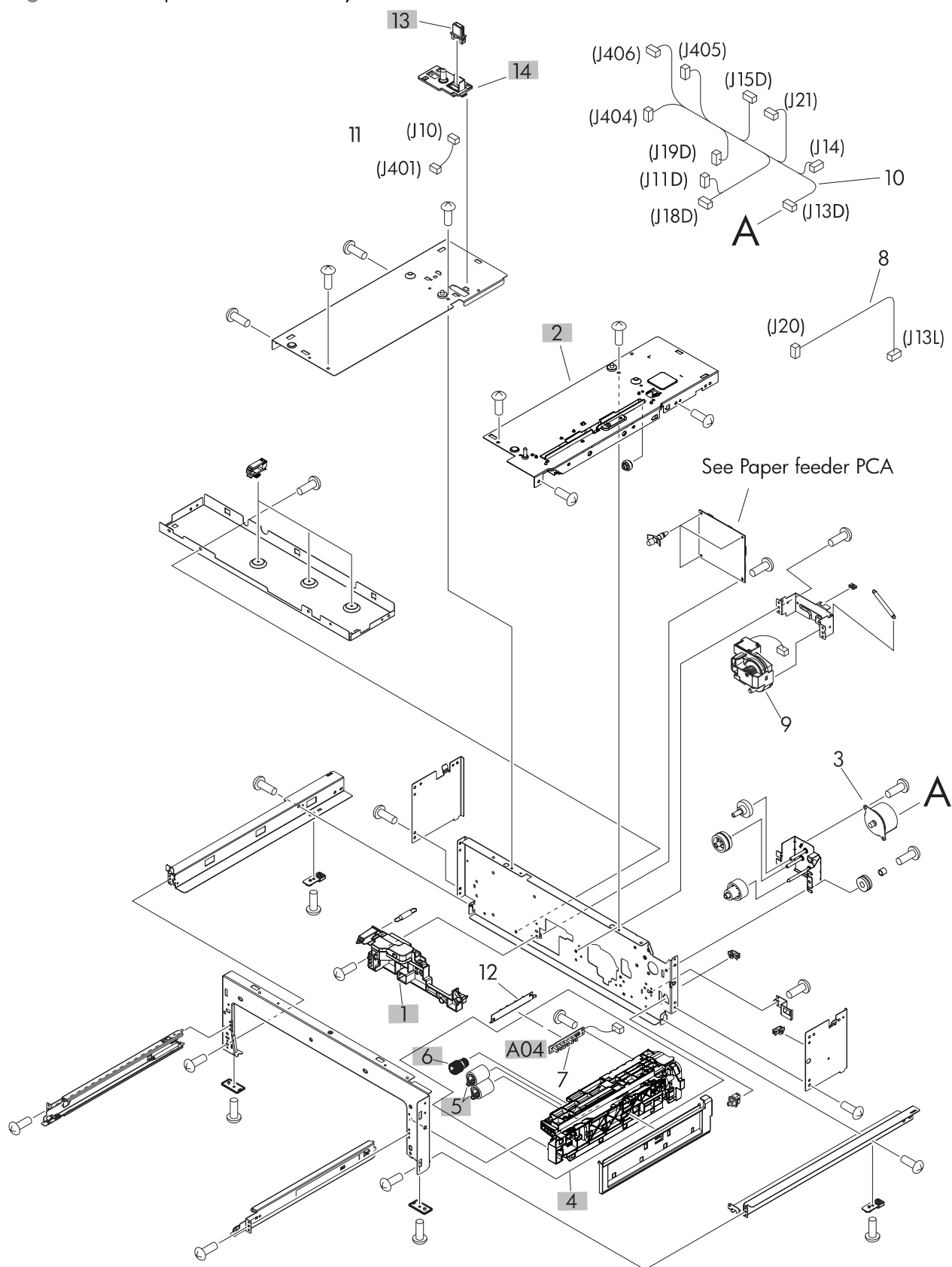


**Table 4-13 Paper feeder covers**

<b>Ref</b>	<b>Description</b>	<b>Part number</b>	<b>Qty</b>
1	Cover, left	RC2-5428-000CN	1
2	Cover, rear	RC2-5429-000CN	1
3	Cover, right	RC2-5427-000CN	1
4	Cover, front upper	RC2-5425-000CN	1
5	Cover, front right	RC2-5426-000CN	1
6	Stopper, door	RC2-5417-000CN	1
7	Cover, left front	RC2-5430-000CN	1
8	Link, door right	RC2-5435-000CN	1
9	Right door assembly	RM1-6192-000CN	1

# Paper feeder main body

**Figure 4-13** Paper feeder main body



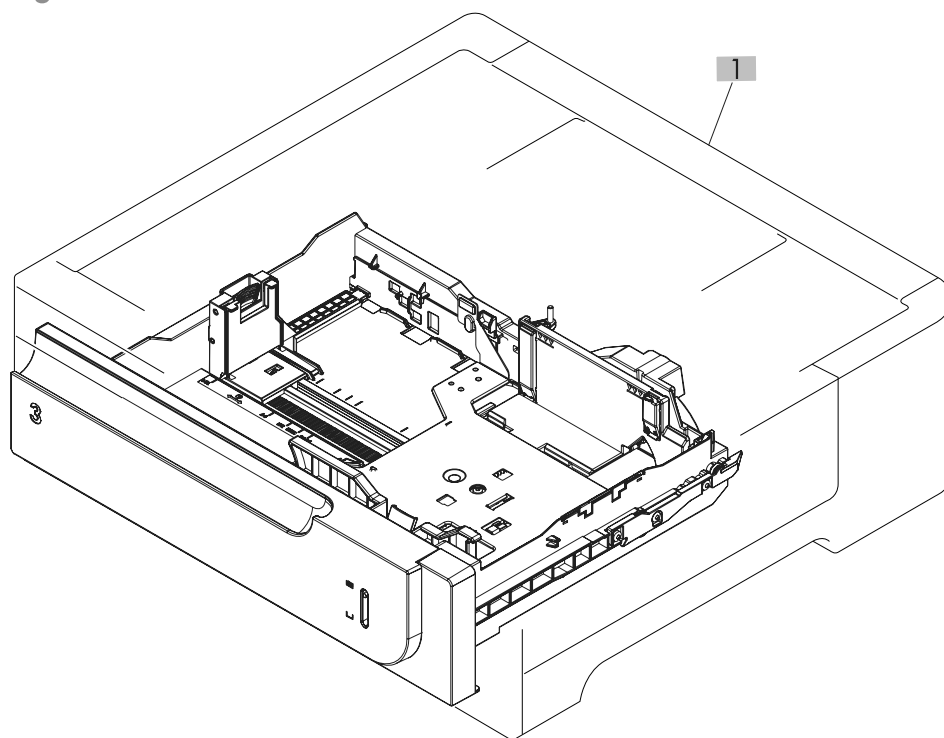
**Table 4-14 Paper feeder main body**

<b>Ref</b>	<b>Description</b>	<b>Part number</b>	<b>Qty</b>
1	Lifter base assembly	RM1-5913-000CN	1
2	Paper feed assembly	RM1-6194-030CN	1
4	Paper pickup assembly	RM1-5919-000CN	1
5	Paper feed roller assembly	CF081-67913	1
6	Roller, paper pickup	CF081-67913	1
13	Drawer connector holder	VS1-7257-007CN	1
14	Holder, drawer connector	RC2-5416-000CN	1
A04	Screw, tapping, pan head M4X10	XB4-7401-007CN	1



## Paper feeder cassette

Figure 4-14 Cassette

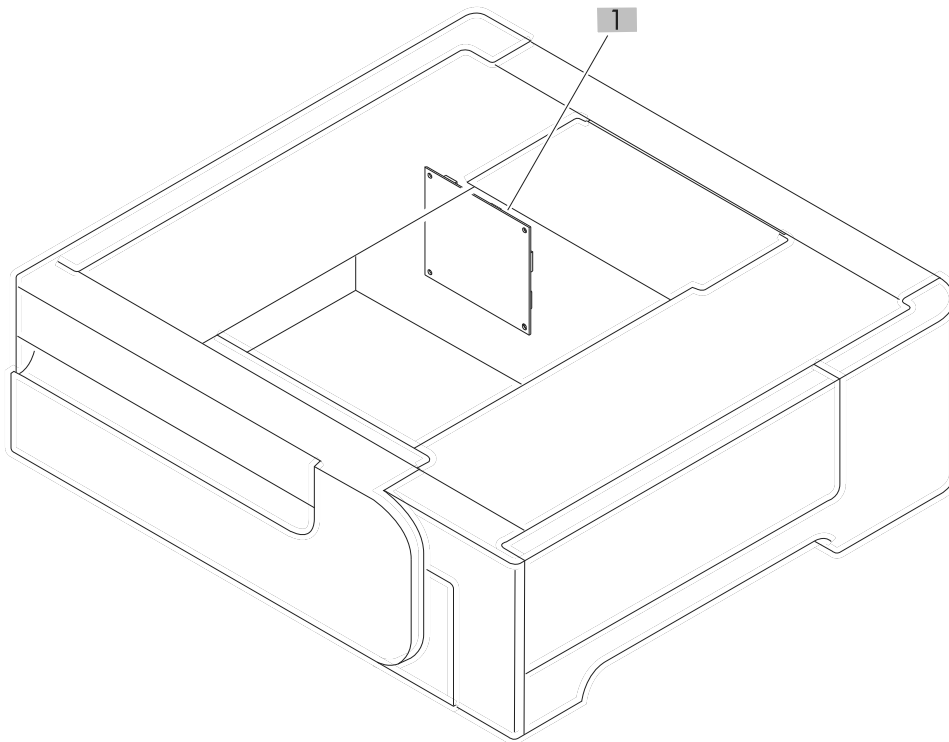


**Table 4-15 Cassette**

<b>Ref</b>	<b>Description</b>	<b>Part number</b>	<b>Qty</b>
1	Cassette assembly (Tray 3)	RM1-6198-000CN	1

## Paper feeder PCA

Figure 4-15 Paper feeder PCA



**Table 4-16 Paper feeder PCA**

<b>Ref</b>	<b>Description</b>	<b>Part number</b>	<b>Qty</b>
1	PCA, paper feeder driver	RM1-5839-000CN	1

# Alphabetical parts list

**Table 4-17 Alphabetical parts list**

Description	Part number	Table and page
1 x 500-sheet feeder replacement kit	CF084-67901	<a href="#">1 x 500-sheet paper feeder on page 553</a>
Arm, interlock link switch	RC2-5121-000CN	<a href="#">Internal assemblies (3 of 5) on page 541</a>
Auto close assembly	RM1-8137-000CN	<a href="#">Internal assemblies (5 of 5) on page 545</a>
Cable, flat 1 scanner	RK2-3941-000CN	<a href="#">Internal assemblies (4 of 5) on page 543</a>
Cable, flat 2 laser	RK2-3943-000CN	<a href="#">Internal assemblies (4 of 5) on page 543</a>
Cassette	RM1-8125-000CN	<a href="#">Cassette on page 547</a>
Cassette assembly (Tray 3)	RM1-6198-000CN	<a href="#">Cassette on page 559</a>
Cassette paper pick up drive assembly (M13)	RM1-8135-000CN	<a href="#">Internal assemblies (5 of 5) on page 545</a>
Connecting cable assembly	RM1-5749-000CN	<a href="#">Internal assemblies (2 of 5) on page 539</a>
Connector, drawer	VS1-7258-007CN	<a href="#">Internal assemblies (5 of 5) on page 545</a>
Cover	RC2-5912-000CN	<a href="#">Internal assemblies (2 of 5) on page 539</a>
Cover	RC2-5962-000CN	<a href="#">Internal assemblies (2 of 5) on page 539</a>
Cover, front inner lower (Y)	RL1-1915-000CN	<a href="#">Internal assemblies (1 of 5) on page 537</a>
Cover, front inner lower unit (CMK)	RL1-1914-020CN	<a href="#">Internal assemblies (1 of 5) on page 537</a>
Cover, front inner, upper	RC3-1070-000CN	<a href="#">Internal assemblies (1 of 5) on page 537</a>
Cover, front right	RC2-5426-000CN	<a href="#">Paper feeder covers on page 555</a>
Cover, front upper	RC2-5425-000CN	<a href="#">Paper feeder covers on page 555</a>
Cover, left	RC2-5428-000CN	<a href="#">Paper feeder covers on page 555</a>
Cover, left assembly	RM1-8159-000CN	<a href="#">External covers, panels, and doors on page 533</a>
Cover, left front	RC3-1113-000CN	<a href="#">External covers, panels, and doors on page 533</a>

**Table 4-17 Alphabetical parts list (continued)**

<b>Description</b>	<b>Part number</b>	<b>Table and page</b>
Cover, left front	RC2-5430-000CN	<a href="#">Paper feeder covers on page 555</a>
Cover, left lower	RC3-1112-000CN	<a href="#">External covers, panels, and doors on page 533</a>
Cover, rear	RC3-1115-000CN	<a href="#">External covers, panels, and doors on page 533</a>
Cover, rear	RC2-5429-000CN	<a href="#">Paper feeder covers on page 555</a>
Cover, rear lower	RC3-1114-000CN	<a href="#">External covers, panels, and doors on page 533</a>
Cover, rear upper	RC2-5058-000CN	<a href="#">External covers, panels, and doors on page 533</a>
Cover, right	RC2-5427-000CN	<a href="#">Paper feeder covers on page 555</a>
Cover, right lower	RC3-1117-000CN	<a href="#">External covers, panels, and doors on page 533</a>
Cover, right lower inner	RC2-5019-000CN	<a href="#">Internal assemblies (3 of 5) on page 541</a>
Cover, right rear	RC3-1116-000CN	<a href="#">External covers, panels, and doors on page 533</a>
Cover, right-front assembly	RM1-8165-000CN	<a href="#">External covers, panels, and doors on page 533</a>
Cover, upper	RC3-1118-000CN	<a href="#">External covers, panels, and doors on page 533</a>
Cover, USB (duplex)	RM1-8173-000CN	<a href="#">External covers, panels, and doors on page 533</a>
Cover, USB (simplex)	RC3-1093-000CN	<a href="#">External covers, panels, and doors on page 533</a>
DC controller PCA	RM1-8104-000CN	<a href="#">PCAs on page 551</a>
Density detect assembly	RM1-8163-000CN	<a href="#">Internal assemblies (3 of 5) on page 541</a>
Door switch assembly	RM1-5732-000CN	<a href="#">Internal assemblies (3 of 5) on page 541</a>
Drawer connector holder	VS1-7257-007CN	<a href="#">Paper feeder main body on page 557</a>
Duplexing drive assembly	RM1-4973-000CN	<a href="#">Internal assemblies (5 of 5) on page 545</a>
Duplexing paper feed assembly	RM1-4959-000CN	<a href="#">Right-door assembly on page 535</a>

**Table 4-17 Alphabetical parts list (continued)**

<b>Description</b>	<b>Part number</b>	<b>Table and page</b>
Duplexing unit cable assembly	RM1-5730-000CN	<a href="#">Internal assemblies (5 of 5) on page 545</a>
Fan (FM1)	RK2-2416-000CN	<a href="#">Internal assemblies (4 of 5) on page 543</a>
Fan (FM2, FM3)	RK2-2418-000CN	<a href="#">Internal assemblies (2 of 5) on page 539</a>
Fan cable assembly	RM1-5746-000CN	<a href="#">Internal assemblies (2 of 5) on page 539</a>
Formatter assembly kit (China)	CF081-67912	<a href="#">PCAs on page 551</a>
Formatter assembly kit (exchange)	CF081-69001	<a href="#">PCAs on page 551</a>
Fusing (fixing) drive assembly (duplex)	RM1-8134-000CN	<a href="#">Internal assemblies (5 of 5) on page 545</a>
Fusing (fixing) drive assembly (simplex)	RM1-8169-000CN	<a href="#">Internal assemblies (5 of 5) on page 545</a>
Fusing (fixing) motor assembly (M2)	RM1-4983-000CN	<a href="#">Internal assemblies (5 of 5) on page 545</a>
Fusing connecting cable assembly	RM1-5714-000CN	<a href="#">Internal assemblies (4 of 5) on page 543</a>
Holder, CST positioning	RC3-1231-000CN	<a href="#">Internal assemblies (1 of 5) on page 537</a>
Holder, drawer connector	RC2-5416-000CN	<a href="#">Paper feeder main body on page 557</a>
Inner connecting PCA (ICB)	RM1-8143-000CN	<a href="#">PCAs on page 551</a>
Left cable assembly	RM1-5742-000CN	<a href="#">Internal assemblies (1 of 5) on page 537</a>
Lever, box presence detect	RC2-5951-000CN	<a href="#">Internal assemblies (1 of 5) on page 537</a>
Lever, cartridge pressure front	RC2-3983-030CN	<a href="#">Internal assemblies (1 of 5) on page 537</a>
Lever, shutter	RC2-4415-000CN	<a href="#">Internal assemblies (2 of 5) on page 539</a>
Lifter base assembly	RM1-5913-000CN	<a href="#">Paper feeder main body on page 557</a>
Lifter drive assembly	RM1-8136-000CN	<a href="#">Internal assemblies (5 of 5) on page 545</a>
Link, door right	RC2-5435-000CN	<a href="#">Paper feeder covers on page 555</a>
Link, interlock	RC2-5120-000CN	<a href="#">Internal assemblies (3 of 5) on page 541</a>

**Table 4-17 Alphabetical parts list (continued)**

<b>Description</b>	<b>Part number</b>	<b>Table and page</b>
Link, interlock	RC2-5119-000CN	<a href="#">Internal assemblies (3 of 5) on page 541</a>
Link, interlock	RC2-5118-000CN	<a href="#">Internal assemblies (3 of 5) on page 541</a>
Link, interlock	RC2-5122-000CN	<a href="#">Internal assemblies (3 of 5) on page 541</a>
Lock, door	RC2-5937-000CN	<a href="#">Internal assemblies (1 of 5) on page 537</a>
Low-voltage power supply 110V	RM1-8091-000CN	<a href="#">PCAs on page 551</a>
Low-voltage power supply 220V	RM1-8093-000CN	<a href="#">PCAs on page 551</a>
Lower HVPS-D PCA	RM1-8087-000CN	<a href="#">PCAs on page 551</a>
Main motor unit (M3, M4, M5)	RM1-8105-000CN	<a href="#">Internal assemblies (5 of 5) on page 545</a>
Microswitch	WC4-5171-000CN	<a href="#">Internal assemblies (3 of 5) on page 541</a>
Motor/sensor cable assembly	RM1-5752-000CN	<a href="#">Internal assemblies (2 of 5) on page 539</a>
Mount, interlock switch	RC2-5123-000CN	<a href="#">Internal assemblies (3 of 5) on page 541</a>
MP sensor cable assembly (duplex)	RM1-5737-000CN	<a href="#">Internal assemblies (4 of 5) on page 543</a>
MP sensor cable assembly (simplex)	RM1-5750-000CN	<a href="#">Internal assemblies (4 of 5) on page 543</a>
Operation (control) panel assembly	RM1-8096-000CN	<a href="#">External covers, panels, and doors on page 533</a>
Paper delivery assembly (duplex)	RM1-4970-060CN	<a href="#">Internal assemblies (3 of 5) on page 541</a>
Paper delivery assembly (simplex)	RM1-5003-050CN	<a href="#">Internal assemblies (3 of 5) on page 541</a>
Paper feed assembly	RM1-6194-030CN	<a href="#">Paper feeder main body on page 557</a>
Paper feed roller assembly	CF081-67913	<a href="#">Paper feeder main body on page 557</a>
Paper pickup assembly	RM1-5919-000CN	<a href="#">Paper feeder main body on page 557</a>
Paper pickup assembly (duplex)	RM1-8124-000CN	<a href="#">Paper pickup assembly on page 549</a>
Paper pickup assembly (simplex)	RM1-8168-000CN	<a href="#">Paper pickup assembly on page 549</a>



**Table 4-17 Alphabetical parts list (continued)**

<b>Description</b>	<b>Part number</b>	<b>Table and page</b>
PCA, paper feeder driver	RM1-5839-000CN	<a href="#">Paper feeder PCA on page 561</a>
Photo interrupter, TLP1243	WG8-5935-000CN	<a href="#">Internal assemblies (5 of 5) on page 545</a>
Photointerrupter	WG8-5935-000CN	<a href="#">Paper pickup assembly on page 549</a>
Pick up lower guide assembly	RM1-8132-000CN	<a href="#">Internal assemblies (3 of 5) on page 541</a>
Pickup motor assembly (M13)	RM1-5773-000CN	<a href="#">Internal assemblies (5 of 5) on page 545</a>
Plate, blanking	RC2-5938-000CN	<a href="#">External covers, panels, and doors on page 533</a>
Rear lock arm assembly	RM1-5533-000CN	<a href="#">Internal assemblies (3 of 5) on page 541</a>
Rear Pre-exposure PCA assembly	RM1-5705-000CN	<a href="#">Internal assemblies (5 of 5) on page 545</a>
Registration assembly (duplex)	RM1-4969-000CN	<a href="#">Internal assemblies (3 of 5) on page 541</a>
Registration assembly (simplex)	RM1-5009-000CN	<a href="#">Internal assemblies (3 of 5) on page 541</a>
Right door assembly	RM1-6192-000CN	<a href="#">Paper feeder covers on page 555</a>
Right-door assembly (duplex)	RM1-8123-000CN	<a href="#">Right-door assembly on page 535</a>
Right-door assembly (simplex)	RM1-8167-000CN	<a href="#">Right-door assembly on page 535</a>
Roller, paper pickup	CF081-67913	<a href="#">Paper feeder main body on page 557</a>
Roller, rail	RC2-4831-000CN	<a href="#">Internal assemblies (1 of 5) on page 537</a>
Screw, tapping, pan head M4X10	XB4-7401-007CN	<a href="#">Paper feeder main body on page 557</a>
Sensor cable assembly	RM1-5740-000CN	<a href="#">Internal assemblies (2 of 5) on page 539</a>
Sensor cable assembly	RM1-5741-000CN	<a href="#">Internal assemblies (2 of 5) on page 539</a>
Sensor cable guide assembly	RM1-8178-000CN	<a href="#">Internal assemblies (3 of 5) on page 541</a>
Shaft	RC2-5913-000CN	<a href="#">Internal assemblies (3 of 5) on page 541</a>

**Table 4-17 Alphabetical parts list (continued)**

<b>Description</b>	<b>Part number</b>	<b>Table and page</b>
Spring, compression	RU6-2316-000CN	<a href="#">Internal assemblies (2 of 5) on page 539</a>
Spring, ground	RU6-2237-000CN	<a href="#">Internal assemblies (1 of 5) on page 537</a>
Spring, tension	RU7-2192-000CN	<a href="#">Internal assemblies (1 of 5) on page 537</a>
Spring, tension	RU6-2436-000CN	<a href="#">Internal assemblies (2 of 5) on page 539</a>
Stepping motor, DC (developing disengagement; M10)	RK2-2415-000CN	<a href="#">Internal assemblies (5 of 5) on page 545</a>
Stopper, door	RC2-5417-000CN	<a href="#">Paper feeder covers on page 555</a>
Switch arm	RC2-5943-000CN	<a href="#">Internal assemblies (4 of 5) on page 543</a>
Switch, PCA assembly	RM1-8097-000CN	<a href="#">Internal assemblies (3 of 5) on page 541</a>
Temperature sensor assembly	RK2-3267-000CN	<a href="#">Internal assemblies (2 of 5) on page 539</a>
Toner sensor holder assembly	RM1-5700-000CN	<a href="#">Internal assemblies (2 of 5) on page 539</a>
Tray, paper delivery	RL1-1941-030CN	<a href="#">External covers, panels, and doors on page 533</a>
Upper HVPS-T PCA (duplex)	RM1-8088-000CN	<a href="#">PCAs on page 551</a>
Upper HVPS-T PCA (simplex)	RM1-8089-000CN	<a href="#">PCAs on page 551</a>
Waste toner detect assembly	RM1-5696-000CN	<a href="#">Internal assemblies (1 of 5) on page 537</a>
Waste toner duct assembly	RM1-8138-000CN	<a href="#">Internal assemblies (1 of 5) on page 537</a>
Wire, (mech) sensor protect	RC2-4828-000CN	<a href="#">Internal assemblies (3 of 5) on page 541</a>

# Numerical parts list

**Table 4-18 Numerical parts list**

Part number	Description	Table and page
CF081-67912	Formatter assembly kit (China)	<a href="#">PCAs on page 551</a>
CF081-67913	Paper feed roller assembly	<a href="#">Paper feeder main body on page 557</a>
CF081-67913	Roller, paper pickup	<a href="#">Paper feeder main body on page 557</a>
CF081-69001	Formatter assembly kit (exchange)	<a href="#">PCAs on page 551</a>
CF084-67901	1 x 500-sheet feeder replacement kit	<a href="#">1 x 500-sheet paper feeder on page 553</a>
RC2-3983-030CN	Lever, cartridge pressure front	<a href="#">Internal assemblies (1 of 5) on page 537</a>
RC2-4415-000CN	Lever, shutter	<a href="#">Internal assemblies (2 of 5) on page 539</a>
RC2-4828-000CN	Wire, (mech) sensor protect	<a href="#">Internal assemblies (3 of 5) on page 541</a>
RC2-4831-000CN	Roller, rail	<a href="#">Internal assemblies (1 of 5) on page 537</a>
RC2-5019-000CN	Cover, right lower inner	<a href="#">Internal assemblies (3 of 5) on page 541</a>
RC2-5058-000CN	Cover, rear upper	<a href="#">External covers, panels, and doors on page 533</a>
RC2-5118-000CN	Link, interlock	<a href="#">Internal assemblies (3 of 5) on page 541</a>
RC2-5119-000CN	Link, interlock	<a href="#">Internal assemblies (3 of 5) on page 541</a>
RC2-5120-000CN	Link, interlock	<a href="#">Internal assemblies (3 of 5) on page 541</a>
RC2-5121-000CN	Arm, interlock link switch	<a href="#">Internal assemblies (3 of 5) on page 541</a>
RC2-5122-000CN	Link, interlock	<a href="#">Internal assemblies (3 of 5) on page 541</a>
RC2-5123-000CN	Mount, interlock switch	<a href="#">Internal assemblies (3 of 5) on page 541</a>
RC2-5416-000CN	Holder, drawer connector	<a href="#">Paper feeder main body on page 557</a>
RC2-5417-000CN	Stopper, door	<a href="#">Paper feeder covers on page 555</a>
RC2-5425-000CN	Cover, front upper	<a href="#">Paper feeder covers on page 555</a>

**Table 4-18 Numerical parts list (continued)**

<b>Part number</b>	<b>Description</b>	<b>Table and page</b>
RC2-5426-000CN	Cover, front right	<a href="#">Paper feeder covers on page 555</a>
RC2-5427-000CN	Cover, right	<a href="#">Paper feeder covers on page 555</a>
RC2-5428-000CN	Cover, left	<a href="#">Paper feeder covers on page 555</a>
RC2-5429-000CN	Cover, rear	<a href="#">Paper feeder covers on page 555</a>
RC2-5430-000CN	Cover, left front	<a href="#">Paper feeder covers on page 555</a>
RC2-5435-000CN	Link, door right	<a href="#">Paper feeder covers on page 555</a>
RC2-5912-000CN	Cover	<a href="#">Internal assemblies (2 of 5) on page 539</a>
RC2-5913-000CN	Shaft	<a href="#">Internal assemblies (3 of 5) on page 541</a>
RC2-5937-000CN	Lock, door	<a href="#">Internal assemblies (1 of 5) on page 537</a>
RC2-5938-000CN	Plate, blanking	<a href="#">External covers, panels, and doors on page 533</a>
RC2-5943-000CN	Switch arm	<a href="#">Internal assemblies (4 of 5) on page 543</a>
RC2-5951-000CN	Lever, box presence detect	<a href="#">Internal assemblies (1 of 5) on page 537</a>
RC2-5962-000CN	Cover	<a href="#">Internal assemblies (2 of 5) on page 539</a>
RC3-1070-000CN	Cover, front inner, upper	<a href="#">Internal assemblies (1 of 5) on page 537</a>
RC3-1093-000CN	Cover, USB (simplex)	<a href="#">External covers, panels, and doors on page 533</a>
RC3-1112-000CN	Cover, left lower	<a href="#">External covers, panels, and doors on page 533</a>
RC3-1113-000CN	Cover, left front	<a href="#">External covers, panels, and doors on page 533</a>
RC3-1114-000CN	Cover, rear lower	<a href="#">External covers, panels, and doors on page 533</a>
RC3-1115-000CN	Cover, rear	<a href="#">External covers, panels, and doors on page 533</a>
RC3-1116-000CN	Cover, right rear	<a href="#">External covers, panels, and doors on page 533</a>

**Table 4-18 Numerical parts list (continued)**

<b>Part number</b>	<b>Description</b>	<b>Table and page</b>
RC3-1117-000CN	Cover, right lower	<a href="#">External covers, panels, and doors on page 533</a>
RC3-1118-000CN	Cover, upper	<a href="#">External covers, panels, and doors on page 533</a>
RC3-1231-000CN	Holder, CST positioning	<a href="#">Internal assemblies (1 of 5) on page 537</a>
RK2-2415-000CN	Stepping motor, DC (developing disengagement; M10)	<a href="#">Internal assemblies (5 of 5) on page 545</a>
RK2-2416-000CN	Fan (FM1)	<a href="#">Internal assemblies (4 of 5) on page 543</a>
RK2-2418-000CN	Fan (FM2, FM3)	<a href="#">Internal assemblies (2 of 5) on page 539</a>
RK2-3267-000CN	Temperature sensor assembly	<a href="#">Internal assemblies (2 of 5) on page 539</a>
RK2-3941-000CN	Cable, flat 1 scanner	<a href="#">Internal assemblies (4 of 5) on page 543</a>
RK2-3943-000CN	Cable, flat 2 laser	<a href="#">Internal assemblies (4 of 5) on page 543</a>
RL1-1914-020CN	Cover, front inner lower unit (CMK)	<a href="#">Internal assemblies (1 of 5) on page 537</a>
RL1-1915-000CN	Cover, front inner lower (Y)	<a href="#">Internal assemblies (1 of 5) on page 537</a>
RL1-1941-030CN	Tray, paper delivery	<a href="#">External covers, panels, and doors on page 533</a>
RM1-4959-000CN	Duplexing paper feed assembly	<a href="#">Right-door assembly on page 535</a>
RM1-4969-000CN	Registration assembly (duplex)	<a href="#">Internal assemblies (3 of 5) on page 541</a>
RM1-4970-060CN	Paper delivery assembly (duplex)	<a href="#">Internal assemblies (3 of 5) on page 541</a>
RM1-4973-000CN	Duplexing drive assembly	<a href="#">Internal assemblies (5 of 5) on page 545</a>
RM1-4983-000CN	Fusing (fixing) motor assembly (M2)	<a href="#">Internal assemblies (5 of 5) on page 545</a>
RM1-5003-050CN	Paper delivery assembly (simplex)	<a href="#">Internal assemblies (3 of 5) on page 541</a>
RM1-5009-000CN	Registration assembly (simplex)	<a href="#">Internal assemblies (3 of 5) on page 541</a>
RM1-5533-000CN	Rear lock arm assembly	<a href="#">Internal assemblies (3 of 5) on page 541</a>

**Table 4-18 Numerical parts list (continued)**

<b>Part number</b>	<b>Description</b>	<b>Table and page</b>
RM1-5696-000CN	Waste toner detect assembly	<a href="#">Internal assemblies (1 of 5) on page 537</a>
RM1-5700-000CN	Toner sensor holder assembly	<a href="#">Internal assemblies (2 of 5) on page 539</a>
RM1-5705-000CN	Rear Pre-exposure PCA assembly	<a href="#">Internal assemblies (5 of 5) on page 545</a>
RM1-5714-000CN	Fusing connecting cable assembly	<a href="#">Internal assemblies (4 of 5) on page 543</a>
RM1-5730-000CN	Duplexing unit cable assembly	<a href="#">Internal assemblies (5 of 5) on page 545</a>
RM1-5732-000CN	Door switch assembly	<a href="#">Internal assemblies (3 of 5) on page 541</a>
RM1-5737-000CN	MP sensor cable assembly (duplex)	<a href="#">Internal assemblies (4 of 5) on page 543</a>
RM1-5740-000CN	Sensor cable assembly	<a href="#">Internal assemblies (2 of 5) on page 539</a>
RM1-5741-000CN	Sensor cable assembly	<a href="#">Internal assemblies (2 of 5) on page 539</a>
RM1-5742-000CN	Left cable assembly	<a href="#">Internal assemblies (1 of 5) on page 537</a>
RM1-5746-000CN	Fan cable assembly	<a href="#">Internal assemblies (2 of 5) on page 539</a>
RM1-5749-000CN	Connecting cable assembly	<a href="#">Internal assemblies (2 of 5) on page 539</a>
RM1-5750-000CN	MP sensor cable assembly (simplex)	<a href="#">Internal assemblies (4 of 5) on page 543</a>
RM1-5752-000CN	Motor/sensor cable assembly	<a href="#">Internal assemblies (2 of 5) on page 539</a>
RM1-5773-000CN	Pickup motor assembly (M13)	<a href="#">Internal assemblies (5 of 5) on page 545</a>
RM1-5839-000CN	PCA, paper feeder driver	<a href="#">Paper feeder PCA on page 561</a>
RM1-5913-000CN	Lifter base assembly	<a href="#">Paper feeder main body on page 557</a>
RM1-5919-000CN	Paper pickup assembly	<a href="#">Paper feeder main body on page 557</a>
RM1-6192-000CN	Right door assembly	<a href="#">Paper feeder covers on page 555</a>
RM1-6194-030CN	Paper feed assembly	<a href="#">Paper feeder main body on page 557</a>

**Table 4-18 Numerical parts list (continued)**

<b>Part number</b>	<b>Description</b>	<b>Table and page</b>
RM1-6198-000CN	Cassette assembly (Tray 3)	<a href="#">Cassette on page 559</a>
RM1-8087-000CN	Lower HVPS-D PCA	<a href="#">PCAs on page 551</a>
RM1-8088-000CN	Upper HVPS-T PCA (duplex)	<a href="#">PCAs on page 551</a>
RM1-8089-000CN	Upper HVPS-T PCA (simplex)	<a href="#">PCAs on page 551</a>
RM1-8091-000CN	Low-voltage power supply 110V	<a href="#">PCAs on page 551</a>
RM1-8093-000CN	Low-voltage power supply 220V	<a href="#">PCAs on page 551</a>
RM1-8096-000CN	Operation (control) panel assembly	<a href="#">External covers, panels, and doors on page 533</a>
RM1-8097-000CN	Switch, PCA assembly	<a href="#">Internal assemblies (3 of 5) on page 541</a>
RM1-8104-000CN	DC controller PCA	<a href="#">PCAs on page 551</a>
RM1-8105-000CN	Main motor unit (M3, M4, M5)	<a href="#">Internal assemblies (5 of 5) on page 545</a>
RM1-8123-000CN	Right-door assembly (duplex)	<a href="#">Right-door assembly on page 535</a>
RM1-8124-000CN	Paper pickup assembly (duplex)	<a href="#">Paper pickup assembly on page 549</a>
RM1-8125-000CN	Cassette	<a href="#">Cassette on page 547</a>
RM1-8132-000CN	Pick up lower guide assembly	<a href="#">Internal assemblies (3 of 5) on page 541</a>
RM1-8134-000CN	Fusing (fixing) drive assembly (duplex)	<a href="#">Internal assemblies (5 of 5) on page 545</a>
RM1-8135-000CN	Cassette paper pick up drive assembly (M13)	<a href="#">Internal assemblies (5 of 5) on page 545</a>
RM1-8136-000CN	Lifter drive assembly	<a href="#">Internal assemblies (5 of 5) on page 545</a>
RM1-8137-000CN	Auto close assembly	<a href="#">Internal assemblies (5 of 5) on page 545</a>
RM1-8138-000CN	Waste toner duct assembly	<a href="#">Internal assemblies (1 of 5) on page 537</a>
RM1-8143-000CN	Inner connecting PCA (ICB)	<a href="#">PCAs on page 551</a>
RM1-8159-000CN	Cover, left assembly	<a href="#">External covers, panels, and doors on page 533</a>
RM1-8163-000CN	Density detect assembly	<a href="#">Internal assemblies (3 of 5) on page 541</a>
RM1-8165-000CN	Cover, right-front assembly	<a href="#">External covers, panels, and doors on page 533</a>

**Table 4-18 Numerical parts list (continued)**

<b>Part number</b>	<b>Description</b>	<b>Table and page</b>
RM1-8167-000CN	Right-door assembly (simplex)	<a href="#">Right-door assembly on page 535</a>
RM1-8168-000CN	Paper pickup assembly (simplex)	<a href="#">Paper pickup assembly on page 549</a>
RM1-8169-000CN	Fusing (fixing) drive assembly (simplex)	<a href="#">Internal assemblies (5 of 5) on page 545</a>
RM1-8173-000CN	Cover, USB (duplex)	<a href="#">External covers, panels, and doors on page 533</a>
RM1-8178-000CN	Sensor cable guide assembly	<a href="#">Internal assemblies (3 of 5) on page 541</a>
RU6-2237-000CN	Spring, ground	<a href="#">Internal assemblies (1 of 5) on page 537</a>
RU6-2316-000CN	Spring, compression	<a href="#">Internal assemblies (2 of 5) on page 539</a>
RU6-2436-000CN	Spring, tension	<a href="#">Internal assemblies (2 of 5) on page 539</a>
RU7-2192-000CN	Spring, tension	<a href="#">Internal assemblies (1 of 5) on page 537</a>
VS1-7257-007CN	Drawer connector holder	<a href="#">Paper feeder main body on page 557</a>
VS1-7258-007CN	Connector, drawer	<a href="#">Internal assemblies (5 of 5) on page 545</a>
WC4-5171-000CN	Microswitch	<a href="#">Internal assemblies (3 of 5) on page 541</a>
WG8-5935-000CN	Photo interrupter, TLP1243	<a href="#">Internal assemblies (5 of 5) on page 545</a>
WG8-5935-000CN	Photointerrupter	<a href="#">Paper pickup assembly on page 549</a>
XB4-7401-007CN	Screw, tapping, pan head M4X10	<a href="#">Paper feeder main body on page 557</a>





---

# A Service and support

- [Hewlett-Packard limited warranty statement](#)
- [HP's Premium Protection Warranty: LaserJet print cartridge limited warranty statement](#)
- [Color LaserJet Fuser Kit, Toner Collection Unit, and Transfer Kit Limited Warranty Statement](#)
- [Data stored on the print cartridge](#)
- [End User License Agreement](#)
- [OpenSSL](#)
- [Customer self-repair warranty service](#)
- [Customer support](#)

# Hewlett-Packard limited warranty statement

HP PRODUCT	DURATION OF LIMITED WARRANTY
HP LaserJet Enterprise 500 color M551n, M551dn, M551xh	One-year on-site warranty

HP warrants to you, the end-user customer, that HP hardware and accessories will be free from defects in materials and workmanship after the date of purchase, for the period specified above. If HP receives notice of such defects during the warranty period, HP will, at its option, either repair or replace products which prove to be defective. Replacement products may be either new or equivalent in performance to new.

HP warrants to you that HP software will not fail to execute its programming instructions after the date of purchase, for the period specified above, due to defects in material and workmanship when properly installed and used. If HP receives notice of such defects during the warranty period, HP will replace software which does not execute its programming instructions due to such defects.

HP does not warrant that the operation of HP products will be uninterrupted or error free. If HP is unable, within a reasonable time, to repair or replace any product to a condition as warranted, you will be entitled to a refund of the purchase price upon prompt return of the product.

HP products may contain remanufactured parts equivalent to new in performance or may have been subject to incidental use.

Warranty does not apply to defects resulting from (a) improper or inadequate maintenance or calibration, (b) software, interfacing, parts or supplies not supplied by HP, (c) unauthorized modification or misuse, (d) operation outside of the published environmental specifications for the product, or (e) improper site preparation or maintenance.

TO THE EXTENT ALLOWED BY LOCAL LAW, THE ABOVE WARRANTIES ARE EXCLUSIVE AND NO OTHER WARRANTY OR CONDITION, WHETHER WRITTEN OR ORAL, IS EXPRESSED OR IMPLIED AND HP SPECIFICALLY DISCLAIMS ANY IMPLIED WARRANTIES OR CONDITIONS OF MERCHANTABILITY, SATISFACTORY QUALITY, AND FITNESS FOR A PARTICULAR PURPOSE. Some countries/regions, states or provinces do not allow limitations on the duration of an implied warranty, so the above limitation or exclusion might not apply to you. This warranty gives you specific legal rights and you might also have other rights that vary from country/region to country/region, state to state, or province to province.

HP's limited warranty is valid in any country/region or locality where HP has a support presence for this product and where HP has marketed this product. The level of warranty service you receive may vary according to local standards. HP will not alter form, fit or function of the product to make it operate in a country/region for which it was never intended to function for legal or regulatory reasons.

TO THE EXTENT ALLOWED BY LOCAL LAW, THE REMEDIES IN THIS WARRANTY STATEMENT ARE YOUR SOLE AND EXCLUSIVE REMEDIES. EXCEPT AS INDICATED ABOVE, IN NO EVENT WILL HP OR ITS SUPPLIERS BE LIABLE FOR LOSS OF DATA OR FOR DIRECT, SPECIAL, INCIDENTAL, CONSEQUENTIAL (INCLUDING LOST PROFIT OR DATA), OR OTHER DAMAGE, WHETHER BASED IN CONTRACT, TORT, OR OTHERWISE. Some countries/regions, states or provinces do not allow the exclusion or limitation of incidental or consequential damages, so the above limitation or exclusion may not apply to you.

THE WARRANTY TERMS CONTAINED IN THIS STATEMENT, EXCEPT TO THE EXTENT LAWFULLY PERMITTED, DO NOT EXCLUDE, RESTRICT OR MODIFY AND ARE IN ADDITION TO THE MANDATORY STATUTORY RIGHTS APPLICABLE TO THE SALE OF THIS PRODUCT TO YOU.

## HP's Premium Protection Warranty: LaserJet print cartridge limited warranty statement

This HP product is warranted to be free from defects in materials and workmanship.

This warranty does not apply to products that (a) have been refilled, refurbished, remanufactured or tampered with in any way, (b) experience problems resulting from misuse, improper storage, or operation outside of the published environmental specifications for the printer product or (c) exhibit wear from ordinary use.

To obtain warranty service, please return the product to place of purchase (with a written description of the problem and print samples) or contact HP customer support. At HP's option, HP will either replace products that prove to be defective or refund your purchase price.

TO THE EXTENT ALLOWED BY LOCAL LAW, THE ABOVE WARRANTY IS EXCLUSIVE AND NO OTHER WARRANTY OR CONDITION, WHETHER WRITTEN OR ORAL, IS EXPRESSED OR IMPLIED AND HP SPECIFICALLY DISCLAIMS ANY IMPLIED WARRANTIES OR CONDITIONS OF MERCHANTABILITY, SATISFACTORY QUALITY, AND FITNESS FOR A PARTICULAR PURPOSE.

TO THE EXTENT ALLOWED BY LOCAL LAW, IN NO EVENT WILL HP OR ITS SUPPLIERS BE LIABLE FOR DIRECT, SPECIAL, INCIDENTAL, CONSEQUENTIAL (INCLUDING LOST PROFIT OR DATA), OR OTHER DAMAGE, WHETHER BASED IN CONTRACT, TORT, OR OTHERWISE.

THE WARRANTY TERMS CONTAINED IN THIS STATEMENT, EXCEPT TO THE EXTENT LAWFULLY PERMITTED, DO NOT EXCLUDE, RESTRICT OR MODIFY AND ARE IN ADDITION TO THE MANDATORY STATUTORY RIGHTS APPLICABLE TO THE SALE OF THIS PRODUCT TO YOU.

# Color LaserJet Fuser Kit, Toner Collection Unit, and Transfer Kit Limited Warranty Statement

This HP product is warranted to be free from defects in materials and workmanship until the printer provides a low-life indicator on the control panel.

This warranty does not apply to products that (a) have been refurbished, remanufactured or tampered with in any way, (b) experience problems resulting from misuse, improper storage, or operation outside of the published environmental specifications for the printer product or (c) exhibit wear from ordinary use.

To obtain warranty service, please return the product to place of purchase (with a written description of the problem) or contact HP customer support. At HP's option, HP will either replace products that prove to be defective or refund your purchase price.

TO THE EXTENT ALLOWED BY LOCAL LAW, THE ABOVE WARRANTY IS EXCLUSIVE AND NO OTHER WARRANTY OR CONDITION, WHETHER WRITTEN OR ORAL, IS EXPRESSED OR IMPLIED AND HP SPECIFICALLY DISCLAIMS ANY IMPLIED WARRANTIES OR CONDITIONS OF MERCHANTABILITY, SATISFACTORY QUALITY, AND FITNESS FOR A PARTICULAR PURPOSE.

TO THE EXTENT ALLOWED BY LOCAL LAW, IN NO EVENT WILL HP OR ITS SUPPLIERS BE LIABLE FOR DIRECT, SPECIAL, INCIDENTAL, CONSEQUENTIAL (INCLUDING LOST PROFIT OR DATA), OR OTHER DAMAGE, WHETHER BASED IN CONTRACT, TORT, OR OTHERWISE.

THE WARRANTY TERMS CONTAINED IN THIS STATEMENT, EXCEPT TO THE EXTENT LAWFULLY PERMITTED, DO NOT EXCLUDE, RESTRICT OR MODIFY AND ARE IN ADDITION TO THE MANDATORY STATUTORY RIGHTS APPLICABLE TO THE SALE OF THIS PRODUCT TO YOU.

## Data stored on the print cartridge

The HP print cartridges used with this product contain a memory chip that assists in the operation of the product.

In addition, this memory chip collects a limited set of information about the usage of the product, which might include the following: the date when the print cartridge was first installed, the date when the print cartridge was last used, the number of pages printed using the print cartridge, the page coverage, the printing modes used, any printing errors that might have occurred, and the product model. This information helps HP design future products to meet our customers' printing needs.

The data collected from the print cartridge memory chip does not contain information that can be used to identify a customer or user of the print cartridge or their product.

HP collects a sampling of the memory chips from print cartridges returned to HP's free return and recycling program (HP Planet Partners: [www.hp.com/recycle](http://www.hp.com/recycle)). The memory chips from this sampling are read and studied in order to improve future HP products. HP partners who assist in recycling this print cartridge might have access to this data, as well.

Any third party possessing the print cartridge might have access to the anonymous information on the memory chip. If you prefer to not allow access to this information, you can render the chip inoperable. However, after you render the memory chip inoperable, the memory chip cannot be used in an HP product.

# End User License Agreement

PLEASE READ CAREFULLY BEFORE USING THIS SOFTWARE PRODUCT: This End-User License Agreement ("EULA") is a contract between (a) you (either an individual or the entity you represent) and (b) Hewlett-Packard Company ("HP") that governs your use of the software product ("Software"). This EULA does not apply if there is a separate license agreement between you and HP or its suppliers for the Software, including a license agreement in online documentation. The term "Software" may include (i) associated media, (ii) a user guide and other printed materials, and (iii) "online" or electronic documentation (collectively "User Documentation").

RIGHTS IN THE SOFTWARE ARE OFFERED ONLY ON THE CONDITION THAT YOU AGREE TO ALL TERMS AND CONDITIONS OF THIS EULA. BY INSTALLING, COPYING, DOWNLOADING, OR OTHERWISE USING THE SOFTWARE, YOU AGREE TO BE BOUND BY THIS EULA. IF YOU DO NOT ACCEPT THIS EULA, DO NOT INSTALL, DOWNLOAD, OR OTHERWISE USE THE SOFTWARE. IF YOU PURCHASED THE SOFTWARE BUT DO NOT AGREE TO THIS EULA, PLEASE RETURN THE SOFTWARE TO YOUR PLACE OF PURCHASE WITHIN FOURTEEN DAYS FOR A REFUND OF THE PURCHASE PRICE; IF THE SOFTWARE IS INSTALLED ON OR MADE AVAILABLE WITH ANOTHER HP PRODUCT, YOU MAY RETURN THE ENTIRE UNUSED PRODUCT.

1. **THIRD PARTY SOFTWARE.** The Software may include, in addition to HP proprietary software ("HP Software"), software under licenses from third parties ("Third Party Software" and "Third Party License"). Any Third Party Software is licensed to you subject to the terms and conditions of the corresponding Third Party License. Generally, the Third Party License is in a file such as "license.txt" or a "readme" file. You should contact HP support if you cannot find a Third Party License. If the Third Party Licenses include licenses that provide for the availability of source code (such as the GNU General Public License) and the corresponding source code is not included with the Software, then check the product support pages of HP's website (hp.com) to learn how to obtain such source code.
2. **LICENSE RIGHTS.** You will have the following rights provided you comply with all terms and conditions of this EULA:
  - a. **Use.** HP grants you a license to Use one copy of the HP Software. "Use" means installing, copying, storing, loading, executing, displaying, or otherwise using the HP Software. You may not modify the HP Software or disable any licensing or control feature of the HP Software. If this Software is provided by HP for Use with an imaging or printing product (for example, if the Software is a printer driver, firmware, or add-on), the HP Software may only be used with such product ("HP Product"). Additional restrictions on Use may appear in the User Documentation. You may not separate component parts of the HP Software for Use. You do not have the right to distribute the HP Software.
  - b. **Copying.** Your right to copy means you may make archival or back-up copies of the HP Software, provided each copy contains all the original HP Software's proprietary notices and is used only for back-up purposes.
3. **UPGRADES.** To Use HP Software provided by HP as an upgrade, update, or supplement (collectively "Upgrade"), you must first be licensed for the original HP Software identified by HP as eligible for the Upgrade. To the extent the Upgrade supersedes the original HP Software, you may no longer use such HP Software. This EULA applies to each Upgrade unless HP provides other terms with the Upgrade. In case of a conflict between this EULA and such other terms, the other terms will prevail.



**4. TRANSFER.**

- a.** Third Party Transfer. The initial end user of the HP Software may make a one-time transfer of the HP Software to another end user. Any transfer will include all component parts, media, User Documentation, this EULA, and if applicable, the Certificate of Authenticity. The transfer may not be an indirect transfer, such as a consignment. Prior to the transfer, the end user receiving the transferred Software will agree to this EULA. Upon transfer of the HP Software, your license is automatically terminated.
- b.** Restrictions. You may not rent, lease or lend the HP Software or Use the HP Software for commercial timesharing or bureau use. You may not sublicense, assign or otherwise transfer the HP Software except as expressly provided in this EULA.

- 5. PROPRIETARY RIGHTS.** All intellectual property rights in the Software and User Documentation are owned by HP or its suppliers and are protected by law, including applicable copyright, trade secret, patent, and trademark laws. You will not remove any product identification, copyright notice, or proprietary restriction from the Software.
- 6. LIMITATION ON REVERSE ENGINEERING.** You may not reverse engineer, decompile, or disassemble the HP Software, except and only to the extent that the right to do so is allowed under applicable law.
- 7. CONSENT TO USE OF DATA.** HP and its affiliates may collect and use technical information you provide in relation to (i) your Use of the Software or the HP Product, or (ii) the provision of support services related to the Software or the HP Product. All such information will be subject to HP's privacy policy. HP will not use such information in a form that personally identifies you except to the extent necessary to enhance your Use or provide support services.
- 8. LIMITATION OF LIABILITY.** Notwithstanding any damages that you might incur, the entire liability of HP and its suppliers under this EULA and your exclusive remedy under this EULA will be limited to the greater of the amount actually paid by you for the Product or U.S. \$5.00. TO THE MAXIMUM EXTENT PERMITTED BY APPLICABLE LAW, IN NO EVENT WILL HP OR ITS SUPPLIERS BE LIABLE FOR ANY SPECIAL, INCIDENTAL, INDIRECT, OR CONSEQUENTIAL DAMAGES (INCLUDING DAMAGES FOR LOST PROFITS, LOST DATA, BUSINESS INTERRUPTION, PERSONAL INJURY, OR LOSS OF PRIVACY) RELATED IN ANY WAY TO THE USE OF OR INABILITY TO USE THE SOFTWARE, EVEN IF HP OR ANY SUPPLIER HAS BEEN ADVISED OF THE POSSIBILITY OF SUCH DAMAGES AND EVEN IF THE ABOVE REMEDY FAILS OF ITS ESSENTIAL PURPOSE. Some states or other jurisdictions do not allow the exclusion or limitation of incidental or consequential damages, so the above limitation or exclusion may not apply to you.
- 9. U.S. GOVERNMENT CUSTOMERS.** Software was developed entirely at private expense. All Software is commercial computer software within the meaning of the applicable acquisition regulations. Accordingly, pursuant to US FAR 48 CFR 12.212 and DFAR 48 CFR 227.7202, use, duplication and disclosure of the Software by or for the U.S. Government or a U.S. Government subcontractor is subject solely to the terms and conditions set forth in this End User License Agreement, except for provisions which are contrary to applicable mandatory federal laws.
- 10. COMPLIANCE WITH EXPORT LAWS.** You will comply with all laws, rules, and regulations (i) applicable to the export or import of the Software, or (ii) restricting the Use of the Software, including any restrictions on nuclear, chemical, or biological weapons proliferation.
- 11. RESERVATION OF RIGHTS.** HP and its suppliers reserve all rights not expressly granted to you in this EULA.

© 2009 Hewlett-Packard Development Company, L.P.

Rev. 04/09

# OpenSSL

This product includes software developed by the OpenSSL Project for use in the OpenSSL Toolkit (<http://www.openssl.org/>)

THIS SOFTWARE IS PROVIDED BY THE OpenSSL PROJECT ``AS IS'' AND ANY EXPRESSED OR IMPLIED WARRANTIES, INCLUDING, BUT NOT LIMITED TO, THE IMPLIED WARRANTIES OF MERCHANTABILITY AND FITNESS FOR A PARTICULAR PURPOSE ARE DISCLAIMED. IN NO EVENT SHALL THE OpenSSL PROJECT OR ITS CONTRIBUTORS BE LIABLE FOR ANY DIRECT, INDIRECT, INCIDENTAL, SPECIAL, EXEMPLARY, OR CONSEQUENTIAL DAMAGES (INCLUDING, BUT NOT LIMITED TO, PROCUREMENT OF SUBSTITUTE GOODS OR SERVICES;

LOSS OF USE, DATA, OR PROFITS; OR BUSINESS INTERRUPTION) HOWEVER CAUSED AND ON ANY THEORY OF LIABILITY, WHETHER IN CONTRACT, STRICT LIABILITY, OR TORT (INCLUDING NEGLIGENCE OR OTHERWISE) ARISING IN ANY WAY OUT OF THE USE OF THIS SOFTWARE, EVEN IF ADVISED OF THE POSSIBILITY OF SUCH DAMAGE.

This product includes cryptographic software written by Eric Young ([eay@cryptsoft.com](mailto:eay@cryptsoft.com)). This product includes software written by Tim Hudson ([tjh@cryptsoft.com](mailto:tjh@cryptsoft.com)).

## Customer self-repair warranty service

HP products are designed with many Customer Self Repair (CSR) parts to minimize repair time and allow for greater flexibility in performing defective parts replacement. If during the diagnosis period, HP identifies that the repair can be accomplished by the use of a CSR part, HP will ship that part directly to you for replacement. There are two categories of CSR parts: 1) Parts for which customer self repair is mandatory. If you request HP to replace these parts, you will be charged for the travel and labor costs of this service. 2) Parts for which customer self repair is optional. These parts are also designed for Customer Self Repair. If, however, you require that HP replace them for you, this may be done at no additional charge under the type of warranty service designated for your product.

Based on availability and where geography permits, CSR parts will be shipped for next business day delivery. Same-day or four-hour delivery may be offered at an additional charge where geography permits. If assistance is required, you can call the HP Technical Support Center and a technician will help you over the phone. HP specifies in the materials shipped with a replacement CSR part whether a defective part must be returned to HP. In cases where it is required to return the defective part to HP, you must ship the defective part back to HP within a defined period of time, normally five (5) business days. The defective part must be returned with the associated documentation in the provided shipping material. Failure to return the defective part may result in HP billing you for the replacement. With a customer self repair, HP will pay all shipping and part return costs and determine the courier/carrier to be used.

# Customer support

Get telephone support for your country/region	Country/region phone numbers are on the flyer that was in the box with your product or at <a href="http://www.hp.com/support/">www.hp.com/support/</a> .
Have the product name, serial number, date of purchase, and problem description ready.	
Get 24-hour Internet support	<a href="http://www.hp.com/support/lj500colorM551">www.hp.com/support/lj500colorM551</a>
Get support for products used with a Macintosh computer	<a href="http://www.hp.com/go/macosex">www.hp.com/go/macosex</a>
Download software utilities, drivers, and electronic information	<a href="http://www.hp.com/go/lj500colorM551_software">www.hp.com/go/lj500colorM551_software</a>
Order additional HP service or maintenance agreements	<a href="http://www.hp.com/go/carepack">www.hp.com/go/carepack</a>
Register your product	<a href="http://www.register.hp.com">www.register.hp.com</a>

---

## B Product specifications

- Physical specifications
- Power consumption, electrical specifications, and acoustic emissions
- Environmental specifications

# Physical specifications

**Table B-1 Product dimensions**

Product	Height	Depth	Width	Weight
HP LaserJet Enterprise 500 color M551n	389 mm (15.3 in)	489 mm (19.3 in)	514 mm (20.2 in)	36.5 kg (80.5 lb)
HP LaserJet Enterprise 500 color M551dn	408 mm (16.1 in)	489 mm (19.3 in)	514 mm (20.2 in)	37 kg (81.6 lb)
HP LaserJet Enterprise 500 color M551xh	575 mm (22.6 in)	489 mm (19.3 in)	514 mm (20.2 in)	44.6 kg (98.3 lb)

**Table B-2 Product dimensions, with all doors and trays fully opened**

Product	Height	Depth	Width
HP LaserJet Enterprise 500 color M551n	389 mm (15.3 in)	804 mm (31.7 in)	824 mm (32.4 in)
HP LaserJet Enterprise 500 color M551dn	408 mm (16.1 in)	804 mm (31.7 in)	824 mm (32.4 in)
HP LaserJet Enterprise 500 color M551xh	575 mm (22.6 in)	804 mm (31.7 in)	824 mm (32.4 in)

## Power consumption, electrical specifications, and acoustic emissions

See [www.hp.com/go/lj500colorM551\\_regulatory](http://www.hp.com/go/lj500colorM551_regulatory) for current information.

**CAUTION:** Power requirements are based on the country/region where the product is sold. Do not convert operating voltages. This will damage the product and void the product warranty.

## Environmental specifications

Environmental condition	Recommended	Allowed
Temperature (product and print cartridge)	17° to 25°C (63° to 77°F)	15° to 27°C (59° to 81°F)
Relative humidity	30% to 70% relative humidity (RH)	10% to 70% RH
Altitude	N/A	0 m (0 ft) to 3000 m (9842 ft)

---

# C Regulatory information

- [FCC regulations](#)
- [Environmental product stewardship program](#)
- [Declaration of conformity](#)
- [Certificate of volatility](#)
- [Safety statements](#)



## FCC regulations

This equipment has been tested and found to comply with the limits for a Class B digital device, pursuant to Part 15 of the FCC rules. These limits are designed to provide reasonable protection against harmful interference in a residential installation. This equipment generates, uses, and can radiate radio frequency energy. If this equipment is not installed and used in accordance with the instructions, it may cause harmful interference to radio communications. However, there is no guarantee that interference will not occur in a particular installation. If this equipment does cause harmful interference to radio or television reception, which can be determined by turning the equipment off and on, the user is encouraged to try to correct the interference by one or more of the following measures:

- Reorient or relocate the receiving antenna.
- Increase separation between equipment and receiver.
- Connect equipment to an outlet on a circuit different from that to which the receiver is located.
- Consult your dealer or an experienced radio/TV technician.



**NOTE:** Any changes or modifications to the printer that are not expressly approved by HP could void the user's authority to operate this equipment.

---

Use of a shielded interface cable is required to comply with the Class B limits of Part 15 of FCC rules.

---

# Environmental product stewardship program

## Protecting the environment

Hewlett-Packard Company is committed to providing quality products in an environmentally sound manner. This product has been designed with several attributes to minimize impacts on our environment.

## Ozone production

This product generates no appreciable ozone gas (O<sub>3</sub>).

## Power consumption

Power usage drops significantly while in Ready or Sleep or Auto-off mode, which saves natural resources and saves money without affecting the high performance of this product. Hewlett-Packard printing and imaging equipment marked with the ENERGY STAR® logo is qualified to the U.S. Environmental Protection Agency's ENERGY STAR specifications for imaging equipment. The following mark will appear on ENERGY STAR qualified imaging products:



Additional ENERGY STAR qualified imaging product model information is listed at:

[www.hp.com/go/energystar](http://www.hp.com/go/energystar)

## Paper use

This product's manual/automatic duplex feature (two-sided printing) and N-up printing (multiple pages printed on one page) capability can reduce paper usage and the resulting demands on natural resources.

## Plastics

Plastic parts over 25 grams are marked according to international standards that enhance the ability to identify plastics for recycling purposes at the end of the product's life.

## HP LaserJet print supplies

It's easy to return and recycle your HP LaserJet print cartridges after use—free of charge—with HP Planet Partners. Multilingual program information and instructions are included in every new HP LaserJet print cartridge and supplies package. You help reduce the toll on the environment further when you return multiple cartridges together rather than separately.

HP is committed to providing inventive, high-quality products and services that are environmentally sound, from product design and manufacturing to distribution, customer use and recycling. When you participate in the HP Planet Partners program, we ensure your HP LaserJet print cartridges are recycled properly, processing them to recover plastics and metals for new products and diverting millions of tons of waste from landfills. Since this cartridge is being recycled and used in new materials, it will not be returned to you. Thank you for being environmentally responsible!



**NOTE:** Use the return label to return original HP LaserJet print cartridges only. Please do not use this label for HP inkjet cartridges, non-HP cartridges, refilled or remanufactured cartridges or warranty returns. For information about recycling your HP inkjet cartridges please go to <http://www.hp.com/recycle>.

## Return and recycling instructions

### United States and Puerto Rico

The enclosed label in the HP LaserJet toner cartridge box is for the return and recycling of one or more HP LaserJet print cartridges after use. Please follow the applicable instructions below.

#### Multiple returns (more than one cartridge)

1. Package each HP LaserJet print cartridge in its original box and bag.
2. Tape the boxes together using strapping or packaging tape. The package can weigh up to 31 kg (70 lb).
3. Use a single pre-paid shipping label.

#### OR

1. Use your own suitable box, or request a free bulk collection box from [www.hp.com/recycle](http://www.hp.com/recycle) or 1-800-340-2445 (holds up to 31 kg (70 lb) of HP LaserJet print cartridges).
2. Use a single pre-paid shipping label.

#### Single returns

1. Package the HP LaserJet print cartridge in its original bag and box.
2. Place the shipping label on the front of the box.

#### Shipping

For US and Puerto Rico HP LaserJet print cartridge recycling returns, use the pre-paid, pre-addressed shipping label contained in the box. To use the UPS label, give the package to the UPS driver during your next delivery or pick-up, or take it to an authorized UPS drop-off center. (Requested UPS Ground pickup will be charged normal pick-up rates) For the location of your local UPS drop-off center, call 1-800-PICKUPS or visit [www.ups.com](http://www.ups.com).

If you are returning the package with the FedEx label, give the package to either the U.S. Postal Service carrier or FedEx driver during your next pick-up or delivery. (Requested FedEx Ground pickup will be charged normal pick-up rates). Or, you can drop off your packaged print cartridge(s) at any U.S. Post Office or any FedEx shipping center or store. For the location of your nearest U.S. Post Office, please

call 1-800-ASK-USPS or visit [www.usps.com](http://www.usps.com). For the location of your nearest FedEx shipping center/store, please call 1-800-GOFEDEX or visit [www.fedex.com](http://www.fedex.com).

For more information, or to order additional labels or boxes for bulk returns, visit [www.hp.com/recycle](http://www.hp.com/recycle) or call 1-800-340-2445. Information subject to change without notice.

## Residents of Alaska and Hawaii

Do not use the UPS label. Call 1-800-340-2445 for information and instructions. The U.S. Postal Service provides no-cost cartridge return transportation services under an arrangement with HP for Alaska and Hawaii.

## Non-U.S. returns

To participate in HP Planet Partners return and recycling program, just follow the simple directions in the recycling guide (found inside the packaging of your new product supply item) or visit [www.hp.com/recycle](http://www.hp.com/recycle). Select your country/region for information on how to return your HP LaserJet printing supplies.

## Paper

This product is capable of using recycled papers when the paper meets the guidelines outlined in the *HP LaserJet Printer Family Print Media Guide*. This product is suitable for the use of recycled paper according to EN12281:2002.

## Material restrictions

This HP product does not contain added mercury.

This HP product contains a battery that might require special handling at end-of-life. The batteries contained in or supplied by Hewlett-Packard for this product include the following:

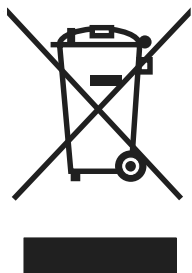
HP LaserJet Enterprise 500 color M551	
Type	Carbon monofluoride lithium
Weight	1.5 g
Location	On formatter board
User-removable	No



廢電池請回收

For recycling information, you can go to [www.hp.com/recycle](http://www.hp.com/recycle), or contact your local authorities or the Electronics Industries Alliance: [www.eiae.org](http://www.eiae.org).

## Disposal of waste equipment by users in private households in the European Union



This symbol on the product or on its packaging indicates that this product must not be disposed of with your other household waste. Instead, it is your responsibility to dispose of your waste equipment by handing it over to a designated collection point for the recycling of waste electrical and electronic equipment. The separate collection and recycling of your waste equipment at the time of disposal will help to conserve natural resources and ensure that it is recycled in a manner that protects human health and the environment. For more information about where you can drop off your waste equipment for recycling, please contact your local city office, your household waste disposal service or the shop where you purchased the product.

## Chemical substances

HP is committed to providing our customers with information about the chemical substances in our products as needed to comply with legal requirements such as REACH (Regulation EC No 1907/2006 of the European Parliament and the Council). A chemical information report for this product can be found at: [www.hp.com/go/reach](http://www.hp.com/go/reach).

## Material Safety Data Sheet (MSDS)

Material Safety Data Sheets (MSDS) for supplies containing chemical substances (for example, toner) can be obtained by accessing the HP Web site at [www.hp.com/go/msds](http://www.hp.com/go/msds) or [www.hp.com/hpinfo/community/environment/productinfo/safety](http://www.hp.com/hpinfo/community/environment/productinfo/safety).

## For more information

To obtain information about these environmental topics:

- Product environmental profile sheet for this and many related HP products
- HP's commitment to the environment
- HP's environmental management system
- HP's end-of-life product return and recycling program
- Material Safety Data Sheets

Visit [www.hp.com/go/environment](http://www.hp.com/go/environment) or [www.hp.com/hpinfo/globalcitizenship/environment](http://www.hp.com/hpinfo/globalcitizenship/environment).

# Declaration of conformity

## Declaration of Conformity

according to ISO/IEC 17050-1 and EN 17050-1

**Manufacturer's Name:** Hewlett-Packard Company DoC#: BOISB-0802-03-rel.1.0

**Manufacturer's Address:** 11311 Chinden Boulevard  
Boise, Idaho 83714-1021, USA

**declares, that the product**

**Product Name:** HP LaserJet Enterprise 500 color M551n  
HP LaserJet Enterprise 500 color M551dn  
HP LaserJet Enterprise 500 color M551xh

**Regulatory Model Number<sup>2)</sup>** BOISB-0802-03  
Including:  
CF084A -- 500 Sheet Input Tray

**Product Options:** ALL

**Print Cartridges:** CE400A, CE400X, CE401A, CE402A, CE403A


**conforms to the following Product Specifications:**

**SAFETY:** IEC 60950-1:2005 / EN60950-1: 2006+A11  
IEC 60825-1:2007 / EN 60825-1:2007 (Class 1 Laser/LED Product)  
IEC 62311:2007 / EN62311:2008  
GB4943-2001

**EMC:** CISPR22:2005 +A1 / EN55022:2006 +A1 - Class B<sup>1), 3)</sup>  
EN 61000-3-2:2006  
EN 61000-3-3:2008  
EN 55024:1998 +A1 +A2  
FCC Title 47 CFR, Part 15 Class B<sup>1), 3)</sup> / ICES-003, Issue 4  
GB9254-2008, GB17625.1-2003

**Energy Use:** Regulation (EC) No. 1275/2008 (Applies only for Class B products)  
ENERGY STAR® Qualified Imaging Equipment Typical Electricity Consumption (TEC) Test Procedure

**Supplementary Information:**

The product herewith complies with the requirements of the EMC Directive 2004/108/EC, the Low Voltage Directive 2006/95/EC and the EuP Directive 2005/32/EC carries the CE-Marking  accordingly.

This Device complies with Part 15 of the FCC Rules. Operation is subject to the following two Conditions: (1) this device may not cause harmful interference, and (2) this device must accept any interference received, including interference that may cause undesired operation.

1. The product was tested in a typical configuration with Hewlett-Packard Personal Computer Systems.
2. For regulatory purposes, this product is assigned a Regulatory model number. This number should not be confused with the product name or the product number(s).

**Boise, Idaho USA**

**September 2011**

**For Regulatory Topics only, contact:**

European Contact:	Your Local Hewlett-Packard Sales and Service Office or Hewlett-Packard GmbH, Department HQ-TRE / Standards Europe, Herrenberger Straße 140, D-71034, Böblingen (FAX: +49-7031-14-3143) <a href="http://www.hp.eu/certificates">www.hp.eu/certificates</a>
USA Contact:	Product Regulations Manager, Hewlett-Packard Company, PO Box 15, Mail Stop 160, Boise, Idaho 83707-0015 (Phone: 208-396-6000)

# Certificate of volatility

This is a statement regarding the volatility of customer data stored in memory. It also outlines how to securely erase data from the product.

## Types of memory

### Volatile memory

The product utilizes 1024 MB of volatile memory used for temporary storage during the process of jobs, and for applications running on the operating system. When the printer is powered off, the memory is erased.

### Non-volatile memory

The product utilizes non-volatile memory (EEPROM, Flash) containing the boot code and factory product configuration data required for the device to function. No customer print data is stored in non-volatile memory. There are no steps to clear this data.

### Mass Storage memory

The product contains an internal Hard Disk Drive (HDD) or Solid State Disk (SSD) to store customer data, device operating system, applications, digitally signed firmware images, persistent data, and temporary data used for processing and system functions.

This data can be erased using the device BIOS menu, embedded web server (EWS), and HP Web Jetadmin with the following commands:

- Erase and Unlock Encrypted Disk - This changes the encryption keys rendering all data unreadable
- Secure Disk Erase - Industry standard ATA Secure Erase. Overwrites all data on the disk
- Secure Storage Erase - Erases temporary files and job data by overwriting information one or three times (HDD only)
- Secure File Erase - Erases files when jobs finish processing by overwriting them one or three times (HDD only)

Secure Storage Erase and Secure Disk Erase features comply with U.S. NIST Special Publication 800-88 Guidelines for Media Sanitization.



# Safety statements

## Laser safety

The Center for Devices and Radiological Health (CDRH) of the U.S. Food and Drug Administration has implemented regulations for laser products manufactured since August 1, 1976. Compliance is mandatory for products marketed in the United States. The device is certified as a “Class 1” laser product under the U.S. Department of Health and Human Services (DHHS) Radiation Performance Standard according to the Radiation Control for Health and Safety Act of 1968. Since radiation emitted inside the device is completely confined within protective housings and external covers, the laser beam cannot escape during any phase of normal user operation.

**⚠ WARNING!** Using controls, making adjustments, or performing procedures other than those specified in this user guide may result in exposure to hazardous radiation.

## Canadian DOC regulations

Complies with Canadian EMC Class B requirements.

« Conforme à la classe B des normes canadiennes de compatibilité électromagnétiques. « CEM ». »

## VCCI statement (Japan)

この装置は、クラスB情報技術装置です。この装置は、家庭環境で使用することを目的としていますが、この装置がラジオやテレビジョン受信機に近接して使用されると、受信障害を引き起こすことがあります。取扱説明書に従って正しい取り扱いをして下さい。

VCCI-B

## Power cord instructions

Make sure your power source is adequate for the product voltage rating. The voltage rating is on the product label. The product uses either 100-127 Vac or 220-240 Vac and 50/60 Hz.

Connect the power cord between the product and a grounded AC outlet.

**⚠ CAUTION:** To prevent damage to the product, use only the power cord that is provided with the product.

## Power cord statement (Japan)

製品には、同梱された電源コードをお使い下さい。  
同梱された電源コードは、他の製品では使用出来ません。

## EMC statement (Korea)

B급 기기 (가정용 방송통신기기)	이 기기는 가정용(B급)으로 전자파적합등록을 한 기기로서 주로 가정에서 사용하는 것을 목적으로 하며, 모든 지역에서 사용할 수 있습니다.
-----------------------	--

## Laser statement for Finland

### Luokan 1 laserlaite

Klass 1 Laser Apparat

HP LaserJet Enterprise 500 color M551n, M551dn, M551xh, laserkirjoitin on käyttäjän kannalta turvallinen luokan 1 laserlaite. Normaalisessa käytössä kirjoittimen suojakotelointi estää lasersäteiden pääsyn laitteen ulkopuolelle. Laitteen turvallisuusluokka on määritetty standardin EN 60825-1 (2007) mukaisesti.

### VAROITUS !

Laitteen käyttäminen muulla kuin käyttöohjeessa mainitulla tavalla saattaa altistaa käyttäjän turvallisuusluokan 1 ylittävälle näkymättömälle lasersäteilylle.

### VARNING !

Om apparaten används på annat sätt än i bruksanvisning specificerats, kan användaren utsättas för osynlig laserstrålning, som överskrider gränsen för laserklass 1.

### HUOLTO

HP LaserJet Enterprise 500 color M551n, M551dn, M551xh - kirjoittimen sisällä ei ole käyttäjän huollettavissa olevia kohteita. Laitteen saa avata ja huoltaa ainoastaan sen huoltamiseen koulutettu henkilö. Tällaiseksi huoltotoimenpiteeksi ei katsota väriainekasetin vaihtamista, paperiradan puhdistusta tai muita käyttäjän käsikirjassa lueteltuja, käyttäjän tehtäväksi tarkoitettuja ylläpitotoimia, jotka voidaan suorittaa ilman erikoistyökaluja.

### VARO !

Mikäli kirjoittimen suojakotelo avataan, olet alttiina näkymättömälle lasersäteilylle laitteen ollessa toiminnassa. Älä katso säteeseen.

### VARNING !

Om laserprinterns skyddshölje öppnas då apparaten är i funktion, utsättas användaren för osynlig laserstrålning. Betrakta ej strålen.

Tiedot laitteessa käytettävän laserdiodin säteilyominaisuuksista: Aallonpituus 775-795 nm Teho 5 m W  
Luokan 3B laser.

## GS statement (Germany)

Das Gerät ist nicht für die Benutzung im unmittelbaren Gesichtsfeld am Bildschirmarbeitsplatz vorgesehen. Um störende Reflexionen am Bildschirmarbeitsplatz zu vermeiden, darf dieses Produkt nicht im unmittelbaren Gesichtsfeld platziert werden.

## Substances Table (China)

### 有毒有害物质表

根据中国电子信息产品污染控制管理办法的要求而出台

部件名称	有毒有害物质和元素					
	铅 (Pb)	汞 (Hg)	镉 (Cd)	六价铬 (Cr(VI))	多溴联苯 (PBB)	多溴二苯醚 (PBDE)
打印引擎	X	0	X	0	0	0
控制面板	0	0	0	0	0	0
塑料外壳	0	0	0	0	0	0
格式化板组件	X	0	0	0	0	0
碳粉盒	X	0	0	0	0	0

3685

0：表示在此部件所用的所有同类材料中，所含的此有毒或有害物质均低于 SJ/T11363-2006 的限制要求。

X：表示在此部件所用的所有同类材料中，至少一种所含的此有毒或有害物质高于 SJ/T11363-2006 的限制要求。

注：引用的“环保使用期限”是根据在正常温度和湿度条件下操作使用产品而确定的。

## Restriction on Hazardous Substances statement (Turkey)

Türkiye Cumhuriyeti: EEE Yönetmeliğine Uygundur

## Restriction on Hazardous Substances statement (Ukraine)

Обладнання відповідає вимогам Технічного регламенту щодо обмеження використання деяких небезпечних речовин в електричному та електронному обладнанні, затвердженого постановою Кабінету Міністрів України від 3 грудня 2008 № 1057

---

# Index

## A

- A3 paper 328, 364
- A4 paper - override 328, 364
- A4 paper - wide 349
- A4/letter override 328, 364
- AC to DC conversion 12
- accessories
  - ordering 526
  - part numbers 527
  - screws 530
- accessories installed, information 306
- acoustic specifications 588
- adjust color 333
- Adjust for Daylight Savings 331
- Administration menu, control panel 329
- after service checklist 73
- alignment 336
- append CR to LF 351
- Auto-Continuable Events 356
- automatic close assembly
  - removing 175

## B

- Backup/Restore menu, control panel 388
- bands, troubleshooting 498
- batteries included 593
- beam-detect (BD) failure 20
- bias generation
  - high-voltage power supply 10
- Black Density 333, 334, 335
- black-only printing mode
  - developing roller state 29
  - primary transfer roller state 33
- blank pages
  - troubleshooting 504
- blank pages - duplex printing 327

- blank pages - suppress 352
- blank pages, troubleshooting 497
- both sides - duplex blank pages 327

## C

- cables
  - USB, troubleshooting 504
- Calibrate/Cleaning menu, control panel 388
- calibration 36
  - information, printed 300
- Canadian DOC regulations 598
- carriage return 351
- cartridges
  - error messages 459
  - recycling 591
  - removing 76
  - replace message 459
  - warranty 578
- cartridges, print
  - part numbers 527
- cassette 49
  - lift operation 45, 64
  - media-width detection 47
  - paper-level detection 46
  - paper-presence detection 46, 66
  - pickup assembly, removing 183
  - pickup drive assembly, removing 176
  - pickup operations 43
  - presence detection 44, 62
  - tray 2, removing 86
  - tray 3, removing 86
  - See also trays
- cautions iii
- characters, troubleshooting 501

- checklists
  - after service 73
  - preservice 73
- circuit diagrams
  - fuser temperature-control 16
  - general 295
  - high-voltage power supply 10
  - low-voltage power supply 12
- clean the paper path
  - cleaning page printing 302, 503
- cleaning
  - product 503
- cleaning page 388
- clearable warnings 356
- clutches
  - DC controller 6
- color
  - calibration 36
  - diagnostic test 307
  - disengagement for black-only printing 29
  - misregistration control 36
  - primary transfer roller state 33
  - troubleshooting 300, 500
- Component Test 387
- components
  - DC controller 5
  - diagnostic tests 280
  - diagrams of 282
  - duplexing unit 55
  - engine-control system 4
  - fuser 15
  - image formation, use during 21
  - intermediate transfer belt (ITB) 31
  - paper feeder 60
  - pickup, feed, and delivery 38

- print cartridge 27
  - protection for 14, 16
  - configuration page 246
  - configuration pages
    - information 306
    - printing 303
  - connectors
    - DC controller PCA 284
  - control panel
    - Administration menu 329
    - assembly, removing 116
    - Backup/Restore menu 388
    - Calibrate/Cleaning menu 388
    - Display Settings menu 355
    - General Settings menu 331
    - Manage Supplies menu 356
    - Manage Trays menu 363
    - messages, troubleshooting 392
    - Network Settings menu 365
    - Print Options menu 352
    - Print Settings menu 349
    - Reports menu 329
    - Supplies menu 316
    - Trays menu 324
    - Troubleshooting menu 382
    - USB Firmware Upgrade menu 391
  - control-panel menus
    - Retrieve From USB Settings 349
    - retrieve job from device
      - memory 312
    - Retrieve Job From USB 311
    - Sign In 310
  - conventions, document iii
  - cooling
    - areas and fans 9
  - copying
    - quality, troubleshooting 497
  - Courier font 349
  - covers
    - control panel assembly,
      - removing 116
    - front door assembly,
      - removing 103
    - front top, removing 122
    - identification and location 102
    - left bottom, removing 113
    - left, removing 111
    - rear top, removing 127
    - rear, removing 124
    - right door assembly,
      - removing 105
    - right front, removing 118
    - right rear, removing 109
    - upper rear, removing 124
  - creases, troubleshooting 501
  - crooked pages
    - troubleshooting 501
  - current-detection protection circuit 17
  - customer support
    - online 586
  - Cyan Density 333, 334, 335
- D**
- dark image, troubleshooting 497
  - date
    - codes for firmware 306
    - manufacture 305
  - DC controller
    - clutches 6
    - components 5
    - fans 7
    - motors 7
    - PCA, connectors 284
    - PCA, removing 160
    - sensors 7
    - solenoids 6
    - switches 6
    - temperature controls 17
    - voltage detection 14
  - DC motors 8
  - DC voltages converted from AC 12
  - defaults restoring 348
  - defeating
    - interlocks 254
  - defects, repeating 308
  - delivery assembly
    - removing 228
  - demo page 246
  - density control 37
  - development process 24
  - diagnostics 300
    - component 280
    - engine 254
    - LED 246
    - networks 374
    - page, printing 300
  - See *also* tests; troubleshooting
  - diagrams 525
  - DIMMs (dual inline memory modules)
    - part numbers 527
  - Display Settings menu, control panel 355
  - disposal, end-of-life 593
  - document conventions iii
  - doors. See covers
  - double-sided printing - duplex blank pages feature 327
  - drawer connector
    - drawer connector, removing 235
  - drive circuit
    - power-supply frequency range 18
  - Duplex Blank Pages 327
  - duplexing - blank pages 327
  - duplexing unit 55
    - components 55
    - duplex drive assembly,
      - removing 233
    - motors 7
    - pickup operation 56
    - See *also* pickup, feed, and delivery
- E**
- Edge Control 345
  - electrical specifications 588
  - electrostatic discharge (ESD) 71
  - end-of-life disposal 593
  - Energy Settings 331
  - engine
    - diagnostics 254
    - test page 257
  - engine-control system
    - components 4
  - environment change control 37
  - environment, specifications 588
  - Environmental Product Stewardship Program 591
  - error messages, control panel 392
  - ESD (electrostatic discharge) 71

European Union, waste disposal 594

event log 246  
clear 470  
information 306  
print 469  
view 470

event-log messages 468  
exhaust fans 9

## F

faded print 497  
failure detection 57  
drive circuit 18  
fuser 18  
lasers and scanners 20  
low-voltage power supply 14  
motors 8  
See also jams

fans  
cartridge, removing 131  
DC controller 7  
delivery, removing 131  
exhaust 9  
intake 9  
power supply fan and fan duct, removing 147

feed, paper. See pickup, feed, and delivery

Finnish laser safety statement 599

firmware  
date codes 306  
version information 305

firmware, downloading new 521

fixing  
definition 3

flowcharts  
troubleshooting 243

font pitch 351

font point size 351

Form Length 350

formatter  
operations 2  
PCA, removing 81

formatter lights 246

fuser 15  
components 15  
control-circuit function 15  
discrepancy detection 18  
drive assembly, removing 223

failure detection 18  
jams 477  
motor, removing 210  
temperature control 16  
See also fusing and delivery unit

fusing  
definition 3  
fusing and delivery unit 52  
operations 52  
See also fuser; pickup, feed, and delivery

## G

General Settings menu, control panel 331

## H

halftone control 37  
handles  
left bottom, removing 114  
rear bottom, removing 130  
right bottom, removing 129

heat control for fuser 16

heaters, fuser 15

high voltage power supply  
removing, lower 167  
removing, upper 201

high-voltage power supply 10  
bias generation 10  
circuits 10  
operations 10  
See also power supply

HIP, removing 115

HP Customer Care 586

HP Jetdirect print server  
configuration page 305  
lights 246

humidity requirements 588

humidity values, printed 300

## I

I/O Timeout 365

image quality issues  
examples and solutions 497

Image Registration 336

Image Rotation 327

image stabilization controls 37

image-formation process 21

imaging drums  
color drums disengagement 29

diagnostic test 256

initial rotation period 3

input trays  
optional, operations 59

installation  
verify for optional accessories 303

intake fans 9

interconnect board (ICB)  
removing 158

interlocks  
defeating 254

intermediate transfer belt (ITB) 98  
components 31  
home position 32  
operations 31

IPv4 information 305

IPv6 information 305

## J

jams 471  
common causes of 471  
detection in paper feeder 68  
detection sensors 57  
diagnostic test for 258  
fuser 477  
lower right door 482  
output bin 475  
recovery 491  
right door 477  
Tray 1 473  
Tray 2 476  
Tray 3 481, 482  
types detected 57

Japanese VCCI statement 598

Jetdirect print server  
lights 246

## K

Korean EMC statement 599

## L

language 355

laser safety statements 598, 599

laser/scanner  
assembly (C/Bk), removing 193

- assembly (Y/M), removing 186
- failure conditions 20
- operations 19
- last rotation period 3
- latent image formation 22
- LEDs. *See* lights
- left cover, removing 111
- letter/A4 override 328, 364
- license, software 581
- lifter drive assembly
  - removing 173
- light print, troubleshooting 497
- lights
  - formatter 246
  - troubleshooting with 246
- line feed 351
- lines, troubleshooting 498
- link speed settings 381
- loop control 53
- loose toner, troubleshooting 500
- low voltage power supply
  - removing 163
- low-voltage power supply 12
  - converted DC voltages 13
  - failure detection 14
  - operations 12
  - protection for components 14
  - safety provided by 14
  - stops and interruptions 13
  - See also* power supply
- lower right door
  - jams 482

## M

- Macintosh
  - support 586
- Magenta Density 333, 334, 335
- main drive assembly
  - removing 212
- Manage Supplies menu, control panel 356
- Manage Trays menu, control panel 363
- manual feed - control panel
  - feature 349
- manual print modes 494
- manually feed prompt -
  - multipurpose tray 325, 363
- margins 336

- material restrictions 593
- Material Safety Data Sheet (MSDS) 594
- media source mapping 352
- memory
  - information 303
  - part numbers 527
  - supply errors 392
- memory chip, print cartridge
  - description 580
- menus, control panel
  - Administration 329
  - Backup/Restore 388
  - Calibrate/Cleaning 388
  - Display Settings 355
  - General Settings 331
  - Manage Supplies 356
  - Manage Trays 363
  - Network Settings 365
  - Print Options 352
  - Print Settings 349
  - Reports 329
  - Supplies 316
  - Trays 324
  - Troubleshooting 382
  - USB Firmware Upgrade 391
- menus, control-panel
  - Retrieve From USB Settings 349
  - retrieve job from device
    - memory 312
  - Retrieve Job From USB 311
  - Sign In 310
- mercury-free product 593
- messages, control panel 392
- model number 305
- motors
  - DC controller 7
  - developing disengagement, removing 170
  - drum motor 1, removing 206
  - drum motor 2 or 3, removing 208
  - failure detection 8
  - fuser, removing 210
  - paper feeder 60
  - pickup, feed, and delivery 0
  - pickup, removing 172

- residual toner feed, removing 138
- stepping 7
- movement of paper through product. *See* pickup, feed, and delivery
- multiple paper feed prevention 48, 67
- multipurpose tray. *See* trays

## N

- Network Settings menu, control panel 365
- networks
  - diagnostics 374
  - HP embedded Jetdirect
    - configuration page 305
  - link speed settings 381
  - security 365
- Normal Paper 341
- notes iii
- Number of Copies 386

## O

- online support 586
- operating environment
  - specifications 588
- operation sequence 3
- ordering
  - part numbers for 527
  - supplies and accessories 526
- output bin
  - jams 475
- overcurrent or overvoltage
  - protection 14
- overhead transparency (OHT)
  - detection 52
- override A4/letter 328, 364

## P

- pages
  - blank 504
  - not printing 504
  - printing slowly 504
  - skewed 501
- paper
  - cassette-presence detection 44, 62
  - jam detection 68
  - level detection 46
  - movement sensors 0 , 57

- multifeed prevention 67
    - presence detection 46, 66
    - size detection 62
    - stop in path for testing 279
    - type detection 52
    - width detection 47
    - wrinkled 501
  - paper feeder 38
    - cassette lift operation 64
    - electrical components 60
    - feed operations 50
    - jam detection 68
    - multifeed prevention 48, 67
    - optional 1 x 500-sheet 59
    - pickup and feed operation 61
    - skew feed prevention 51
    - See also pickup, feed, and delivery
  - paper jams. See jams
  - paper path
    - diagnostic test 258
    - stop movement for testing 279
  - paper source mapping 352
  - paper-path
    - test, sensors 258
  - parameters, EP, troubleshooting 300
  - part numbers
    - memory 527
    - print cartridges 527
    - screws 530
    - toner collection unit 527
  - parts 525
  - parts lists and diagrams
    - covers 532
    - HP LaserJet Enterprise 500 color M551 532
    - internal assemblies 536, 538, 540, 542, 544
    - using 530
  - password
    - Service menu PIN 507
  - PCL 350
  - PDF error page 349
  - PDF errors 349
  - periods of the operation
    - sequence 3
  - pickup, feed, and delivery 38, 52, 55
    - components 38
    - multipurpose tray pickup 49
    - overview 38
    - paper-feed operations 50
    - paper-feeder pickup and feed 61
    - pickup-and-feed unit operations 42
    - See also paper feeder; fusing and delivery unit; duplexing unit
  - pliers, required 72
  - port configuration information 305
  - post service tests 73
  - PostScript errors 349
  - power
    - consumption 588
  - power supply 12
    - frequency range for drive circuit 18
    - troubleshooting 244
    - See also low-voltage power supply; high-voltage power supply
  - power-off condition
    - DC controller 15
  - power-save mode. See sleep settings
  - preservice checklist 73
  - pressure-roller pressurization control 54
  - print cartridges
    - components 27
    - diagnostic test 256
    - error conditions 29
    - error messages 459
    - memory chips 580
    - operations 28
    - part numbers 527
    - recycling 591
    - removing 76
    - replace message 459
    - warranty 578
  - Print Mode 338
  - Print Options menu, control panel 352
  - print quality 333
    - built-in troubleshooting pages 297
    - color misregistration control 36
    - image stabilization controls 37
    - manual print modes 494
    - test 73
    - test pages 297
    - troubleshooting 497
  - Print Quality menu options 494
  - Print Settings menu, control panel 349
  - Print Test Page 336
  - printing
    - modes, manual 494
    - period in operation sequence 3
    - process explained 21
    - stop for testing 279
    - troubleshooting 504
  - problem-solving
    - event-log messages 468
    - networks 374
  - Process Cleaning Page 388
  - product specifications 587
  - PS error page 349
  - PS errors 349
- Q**
- quality. See print quality
  - Quick Copy Job Held Timeout 347
  - Quick Copy Job Storage Limit 347
- R**
- recycling 591
    - HP printing supplies returns and environmental program 592
  - registration 336
  - registration assembly
    - removing 150
  - regulatory statements
    - environmental product stewardship program 591
  - removing parts
    - automatic close assembly 175
    - cartridge fan 131
    - cassette pickup assembly 183
    - cassette pickup drive assembly 176
    - cautions for 70



- checklists 73
- control panel assembly 116
- DC controller PCA 160
- delivery assembly 228
- delivery fan 131
- developing disengagement motor 170
- drawer connector 235
- drum motor 1 206
- drum motor 2 or 3 208
- duplex drive assembly 233
- environmental sensor 131
- formatter PCA 81
- front door assembly 103
- front top cover 122
- fuser 87
- fuser drive assembly 223
- fuser motor 210
- hardware integration pocket 115
- high voltage power supply lower 167
- high voltage power supply upper 201
- interconnect board (ICB) 158
- intermediate transfer belt 98
- laser/scanner assembly (C/Bk) 193
- laser/scanner assembly (Y/M) 186
- left bottom cover 113
- left bottom handle 114
- left cover 111
- lifter drive assembly 173
- low voltage power supply 163
- main drive assembly 212
- pickup motor 172
- pickup roller (tray 1) 88
- pickup roller (tray 2) 89
- power supply fan and fan duct 147
- print cartridges 76
- rear bottom handle 130
- rear cover 124
- rear top cover 127
- registration assembly 150
- registration density (RD) sensor assembly 143
- residual toner feed motor 138
- right bottom handle 129

- right door assembly 105
- right front cover 118
- right rear cover 109
- secondary transfer assembly 96
- secondary transfer roller 94
- separation roller (tray 2) 93
- toner collection sensor 136
- toner collection unit 79
- tools, required 72
- tray cassette 86
- upper rear cover 124
- repeating defects, troubleshooting 308
- replace supplies message 459
- replacing parts 70
- Reports menu, control panel 329
- resolution troubleshooting quality 497
- Restore All Factory Defaults 348
- Retrieve From USB Settings menu 349
- retrieve job from device memory menu 312
- Retrieve Job From USB menu 311
- reverse and feed control, duplexer 56
- right door jams 477
- roller pickup roller (Tray 1), removing 88
- pickup roller (Tray 2), removing 89
- rollers secondary transfer roller, removing 96
- separation roller (Tray 2), removing 93
- ruler, repetitive defect 308

## S

- safety features when front door is open 14
- safety statements 598, 599
- scanner-motor failure 20
- screwdrivers, required 72

- screws part numbers 530
- replacing 70
- secondary transfer roller, removing 94
- security settings 365
- security settings information 305
- sensor tests manual door (front and right) interlock switches sensor 269
- duplexer refeed sensor 264
- fuser loop sensors 262
- fuser output sensor 263
- fuser pressure release sensor 266
- ITB alienation sensor 267
- output-bin full sensor 265
- registration sensor 261
- tray 1 paper sensor 272
- tray 2 cassette lifter sensor 275
- tray 2 cassette sensor 274
- tray 2 paper sensor (M) 273
- tray 3 empty sensor 276
- tray 3 media feed sensor 277
- tray 3 media size sensors 279
- tray 3 stack surface sensor 278
- sensors DC controller 7
- diagnostic tests 258
- environmental, removing 131
- jam detection 57
- paper feeder 60
- pickup, feed, and delivery 0
- registration density (RD) sensor assembly, removing 143
- tests, manual 260
- tests, manual tray/bin 271
- toner collection sensor, removing 136
- sequence of operation 3
- service tools, required 72
- Service menu options 507
- Set Registration 336
- Sign In menu 310

- Size/Type Prompt 325, 363
- skew-feed prevention 51
- skewed pages
  - troubleshooting 501
- sleep settings
  - voltage for 13
  - voltage too high during 14
- Sleep/Auto Off Timer 331
- Smart Duplexing 327
- smeared toner, troubleshooting 501
- software
  - software license agreement 581
- solenoids
  - DC controller 6
  - paper feeder 60
  - pickup, feed, and delivery 0
- solve problems 237
- solving
  - direct-connect problems 505
  - network problems 505
- specifications 587
  - electrical and acoustic 588
  - operating environment 588
- standby period 3
- static precautions 71
- status page 246
- stepping motors 8
- stop printing for test 279
- streaks, troubleshooting 498
- subvoltage
  - low-voltage power supply circuit 13
- supplies
  - error messages 459
  - memory errors 392
  - ordering 526
  - part numbers 527
  - recycling 591
  - replace message 459
- Supplies menu, control panel 316
- support
  - online 586
- suppress blank pages 352
- switches
  - DC controller 6
- paper feeder 60, 62
- pickup, feed, and delivery 0
- symbol set 351
- T**
- TCP/IP information 305
- TCU
  - part numbers 527
- technical support
  - online 586
- temperature
  - control for fuser 16
  - thresholds for fuser
    - components 17, 18
    - values, printed 300
- temperature requirements 588
- test components 387
- tests
  - color band 307
  - component tests list and descriptions 280
  - disable cartridge check 256
  - engine 257
  - manual sensor 260
  - networks 374
  - paper path 258
  - paper-path sensors 258
  - post service 73
  - print-quality 73
  - print/stop 279
  - tray/bin manual sensor 271
- text, troubleshooting 501
- thermistors
  - fuser 15, 17
  - open detection 18
- thermopiles
  - fuser 17
- thermoswitches
  - fuser 15, 17
- thresholds
  - power-supply frequency, drive circuit 18
  - temperature, fuser
    - components 17, 18
- timing chart 294
- tips iii
- toner
  - image formation, use during 22
  - loose, troubleshooting 500
  - patterns for calibration 36
  - smeared, troubleshooting 501
- toner cartridges. *See* print cartridges
- toner collection unit
  - part numbers 527
  - removing 79
- tools, required 72
- transfer processes 25
- Tray 1
  - jams 473
- Tray 2
  - jams 476
- Tray 3
  - jams 481, 482
- Tray >1 Sensing 338
- tray closed 325, 363
- tray not available 326, 364
- tray numbering 352
- tray open 325, 363
- tray selection - use requested tray 325, 363
- trays 49
  - multipurpose, pickup operation 49
  - removing 86
  - See also* cassette
- Trays menu, control panel 324
- triac-drive circuit
  - deactivation 17
- troubleshooting 237, 300
  - blank pages 504
  - checklist 238
  - clean the paper path 302, 503
  - color 300
  - configuration page 246
  - configuration pages for 303
  - control panel messages 392
  - demo page 246
  - direct-connect problems 505
  - EP parameters 300
  - event log 246
  - flowchart 243
  - lights, using 246
  - lines, printed pages 498
  - network problems 505
  - pages not printing 504
  - pages printing slowly 504

- power 244
- print quality issues 497
- process 243
- repeating defects 308
- reports and tools 246
- skewed pages 501
- status page 246
- text 501
- toner smear 501
- USB cables 504
- wrinkles 501

See *also* diagnostics

Troubleshooting menu, control  
panel 382

two-sided printing - duplex blank  
pages 327

## U

updates, downloading product  
521

USB Firmware Upgrade menu,  
control panel 391

USB port  
troubleshooting 504

Use Another Tray 326, 364

Use Requested Tray 325, 363

## V

version, hardware firmware 305

vertical lines, troubleshooting 498

voltage detection  
DC controller 14

## W

waiting period 3

warnings iii

warranty  
customer self repair 585  
license 581  
print cartridges 578  
product 576

Web sites  
customer support 586  
Macintosh customer support  
586  
Material Safety Data Sheet  
(MSDS) 594  
ordering supplies 526  
white spots, troubleshooting 498  
Wide A4 349  
wrinkles, troubleshooting 501

## Y

Yellow Density 333, 334, 335





CF079-90942

